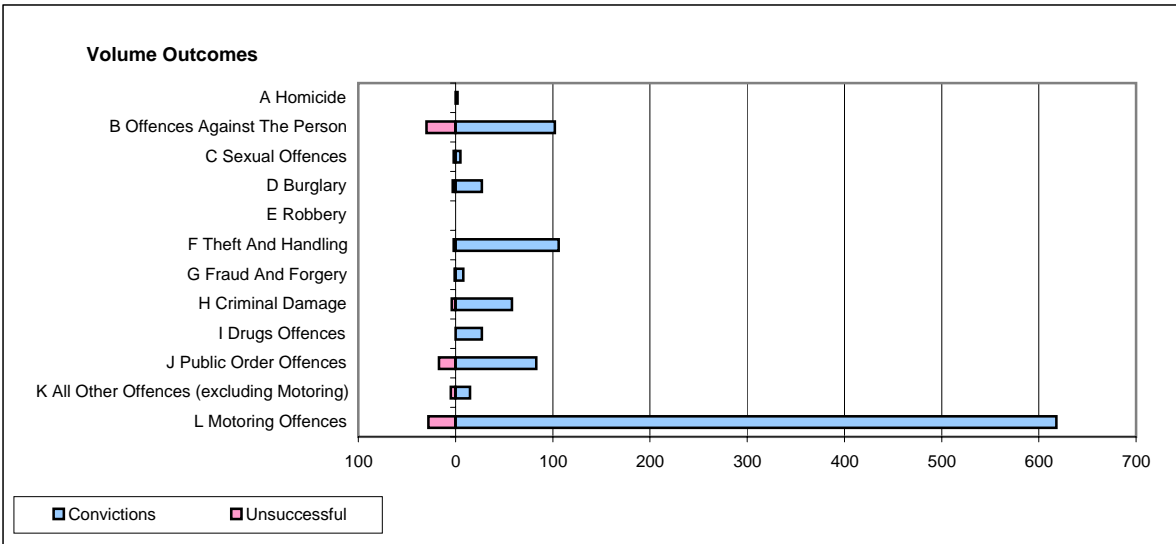
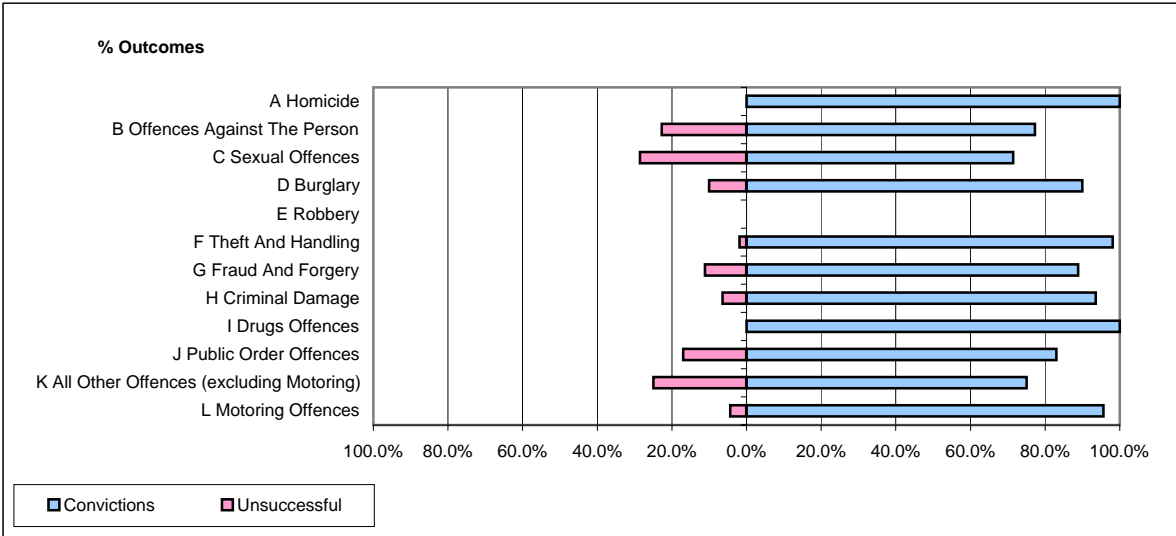


CPS OUTCOMES BY PRINCIPAL OFFENCE CATEGORY

November 2007

P23-Lincolnshire



	Convictions		Unsuccessful	
	Number of Defendants	%	Number of Defendants	%
A Homicide	2	100.0%	0	0.0%
B Offences Against The Person	102	77.3%	30	22.7%
C Sexual Offences	5	71.4%	2	28.6%
D Burglary	27	90.0%	3	10.0%
E Robbery	0	0	0	0
F Theft And Handling	106	98.1%	2	1.9%
G Fraud And Forgery	8	88.9%	1	11.1%
H Criminal Damage	58	93.5%	4	6.5%
I Drugs Offences	27	100.0%	0	0.0%
J Public Order Offences	83	83.0%	17	17.0%
K All Other Offences (excluding Motoring)	15	75.0%	5	25.0%
L Motoring Offences	618	95.7%	28	4.3%
Admin Finalisations	0	0.0%	15	100.0%
TOTAL	1,051	90.8%	107	9.2%