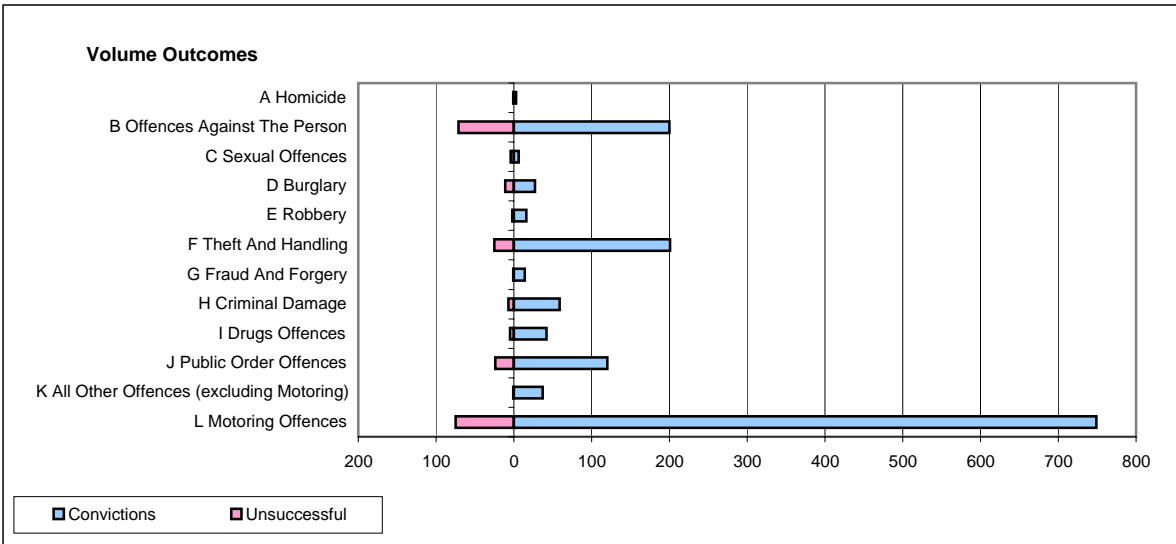
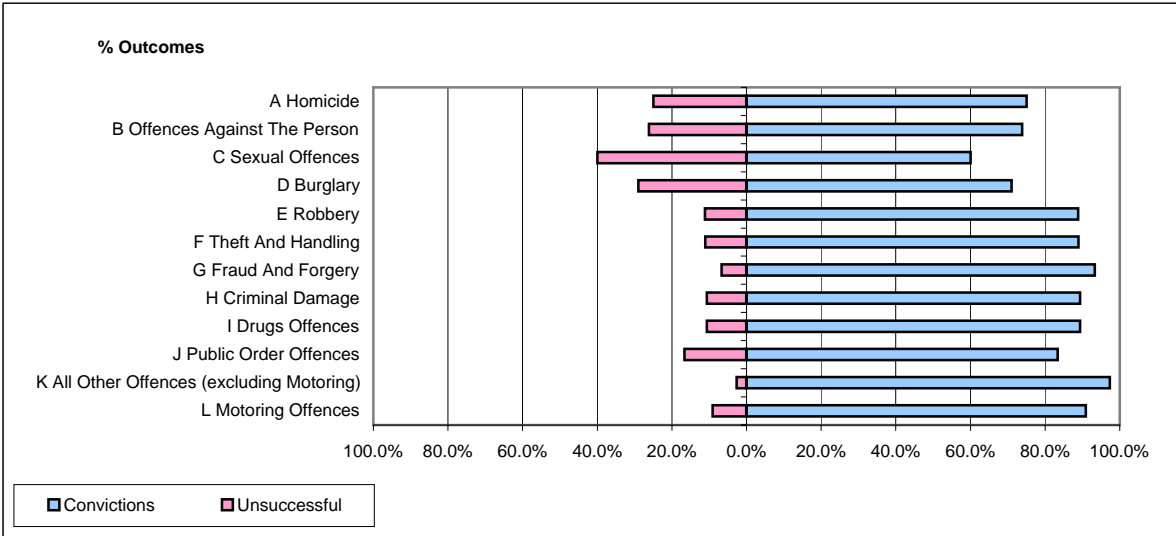


CPS OUTCOMES BY PRINCIPAL OFFENCE CATEGORY

November 2007

P22-Leicestershire



	Convictions		Unsuccessful	
	Number of Defendants	%	Number of Defendants	%
A Homicide	3	75.0%	1	25.0%
B Offences Against The Person	200	73.8%	71	26.2%
C Sexual Offences	6	60.0%	4	40.0%
D Burglary	27	71.1%	11	28.9%
E Robbery	16	88.9%	2	11.1%
F Theft And Handling	201	88.9%	25	11.1%
G Fraud And Forgery	14	93.3%	1	6.7%
H Criminal Damage	59	89.4%	7	10.6%
I Drugs Offences	42	89.4%	5	10.6%
J Public Order Offences	120	83.3%	24	16.7%
K All Other Offences (excluding Motoring)	37	97.4%	1	2.6%
L Motoring Offences	749	90.9%	75	9.1%
Admin Finalisations	0	0.0%	14	100.0%
TOTAL	1,474	85.9%	241	14.1%