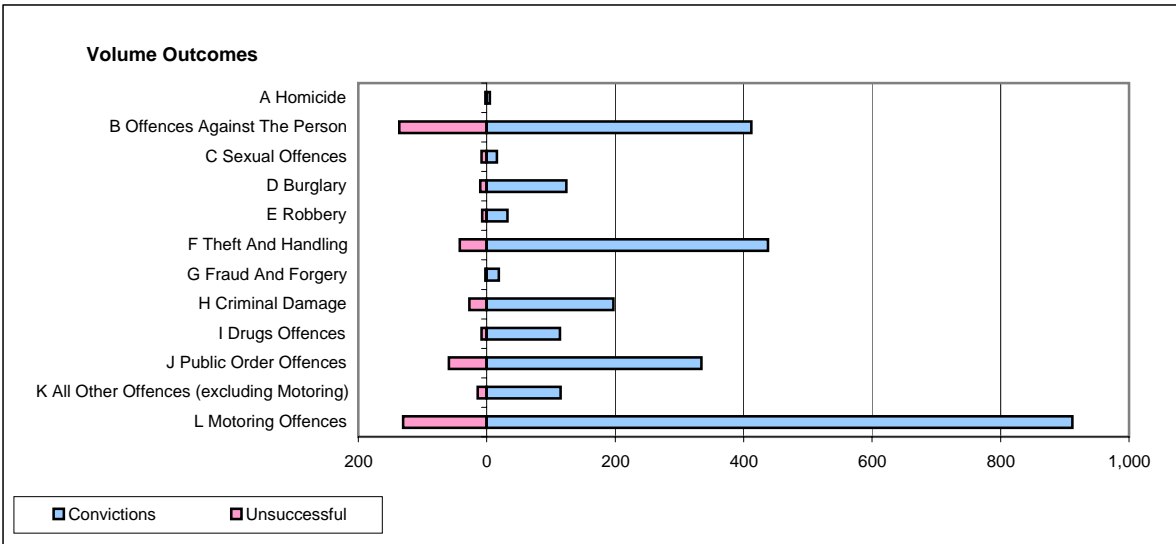
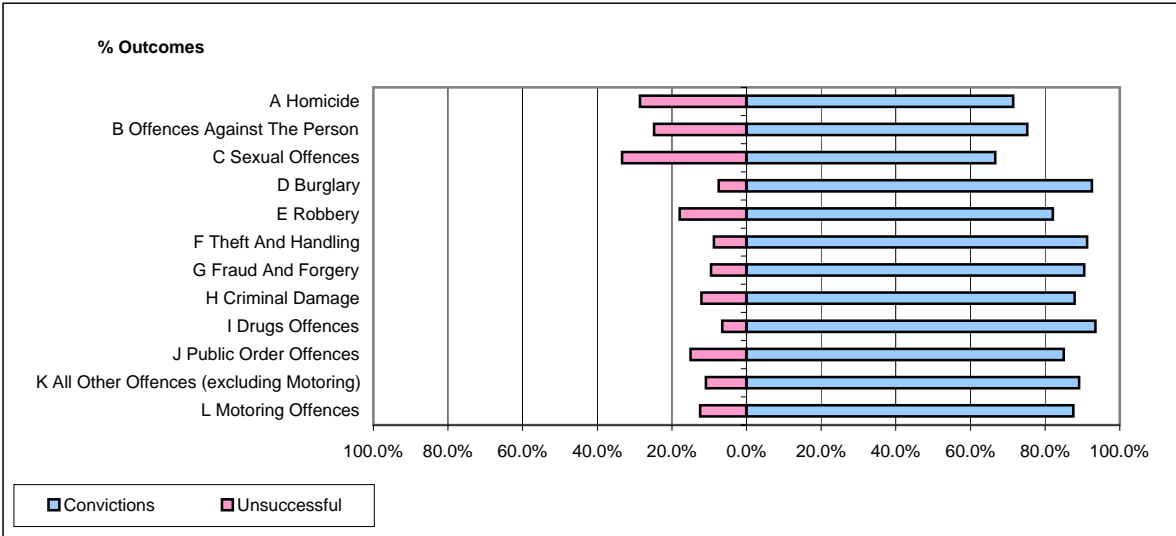


**CPS OUTCOMES BY PRINCIPAL OFFENCE CATEGORY**

**November 2007**

**P21-Lancashire**



|  | Convictions          |              | Unsuccessful         |              |
|--|----------------------|--------------|----------------------|--------------|
|  | Number of Defendants | %            | Number of Defendants | %            |
| <b>A Homicide</b>                                | 5                    | 71.4%        | 2                    | 28.6%        |
| <b>B Offences Against The Person</b>             | 412                  | 75.2%        | 136                  | 24.8%        |
| <b>C Sexual Offences</b>                         | 16                   | 66.7%        | 8                    | 33.3%        |
| <b>D Burglary</b>                                | 124                  | 92.5%        | 10                   | 7.5%         |
| <b>E Robbery</b>                                 | 32                   | 82.1%        | 7                    | 17.9%        |
| <b>F Theft And Handling</b>                      | 438                  | 91.3%        | 42                   | 8.8%         |
| <b>G Fraud And Forgery</b>                       | 19                   | 90.5%        | 2                    | 9.5%         |
| <b>H Criminal Damage</b>                         | 197                  | 87.9%        | 27                   | 12.1%        |
| <b>I Drugs Offences</b>                          | 114                  | 93.4%        | 8                    | 6.6%         |
| <b>J Public Order Offences</b>                   | 334                  | 85.0%        | 59                   | 15.0%        |
| <b>K All Other Offences (excluding Motoring)</b> | 115                  | 89.1%        | 14                   | 10.9%        |
| <b>L Motoring Offences</b>                       | 912                  | 87.5%        | 130                  | 12.5%        |
| <b>Admin Finalisations</b>                       | 0                    | 0.0%         | 47                   | 100.0%       |
| <b>TOTAL</b>                                     | <b>2,718</b>         | <b>84.7%</b> | <b>492</b>           | <b>15.3%</b> |