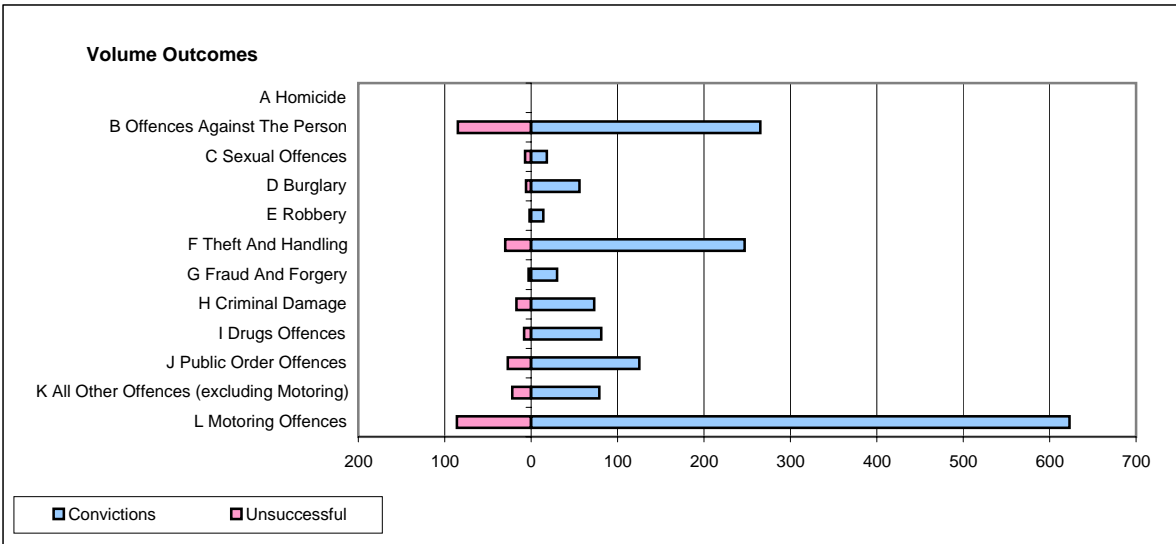
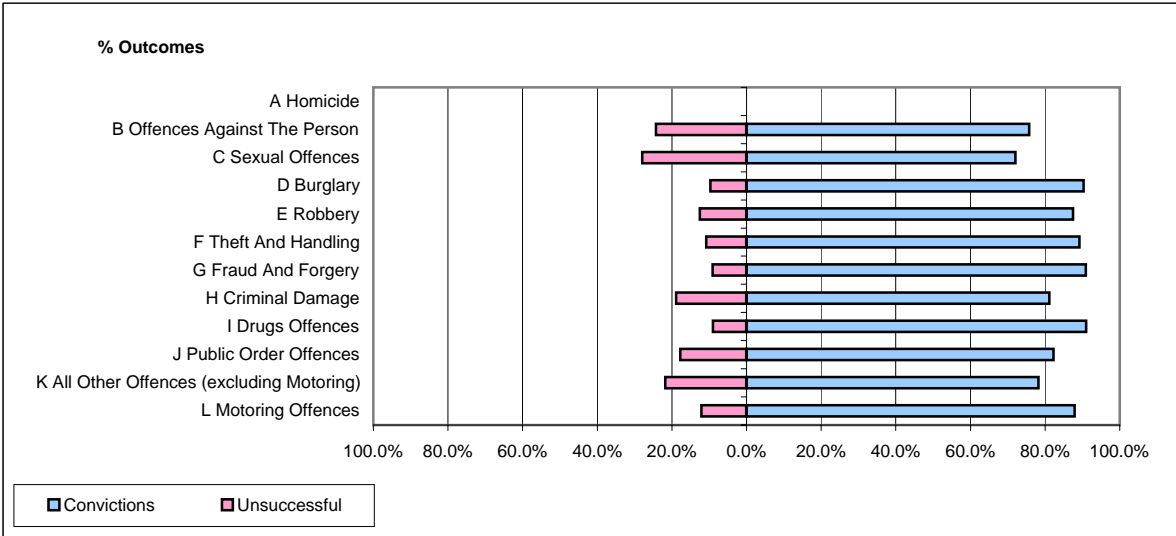


**CPS OUTCOMES BY PRINCIPAL OFFENCE CATEGORY**

**November 2007**

**P20-Kent**



	Convictions		Unsuccessful	
	Number of Defendants	%	Number of Defendants	%
<b>A Homicide</b>	<b>0</b>	<b>0</b>	<b>0</b>	<b>0</b>
<b>B Offences Against The Person</b>	<b>265</b>	<b>75.7%</b>	<b>85</b>	<b>24.3%</b>
<b>C Sexual Offences</b>	<b>18</b>	<b>72.0%</b>	<b>7</b>	<b>28.0%</b>
<b>D Burglary</b>	<b>56</b>	<b>90.3%</b>	<b>6</b>	<b>9.7%</b>
<b>E Robbery</b>	<b>14</b>	<b>87.5%</b>	<b>2</b>	<b>12.5%</b>
<b>F Theft And Handling</b>	<b>247</b>	<b>89.2%</b>	<b>30</b>	<b>10.8%</b>
<b>G Fraud And Forgery</b>	<b>30</b>	<b>90.9%</b>	<b>3</b>	<b>9.1%</b>
<b>H Criminal Damage</b>	<b>73</b>	<b>81.1%</b>	<b>17</b>	<b>18.9%</b>
<b>I Drugs Offences</b>	<b>81</b>	<b>91.0%</b>	<b>8</b>	<b>9.0%</b>
<b>J Public Order Offences</b>	<b>125</b>	<b>82.2%</b>	<b>27</b>	<b>17.8%</b>
<b>K All Other Offences (excluding Motoring)</b>	<b>79</b>	<b>78.2%</b>	<b>22</b>	<b>21.8%</b>
<b>L Motoring Offences</b>	<b>623</b>	<b>87.9%</b>	<b>86</b>	<b>12.1%</b>
<b>Admin Finalisations</b>	<b>0</b>	<b>0.0%</b>	<b>26</b>	<b>100.0%</b>
<b>TOTAL</b>	<b>1,611</b>	<b>83.5%</b>	<b>319</b>	<b>16.5%</b>