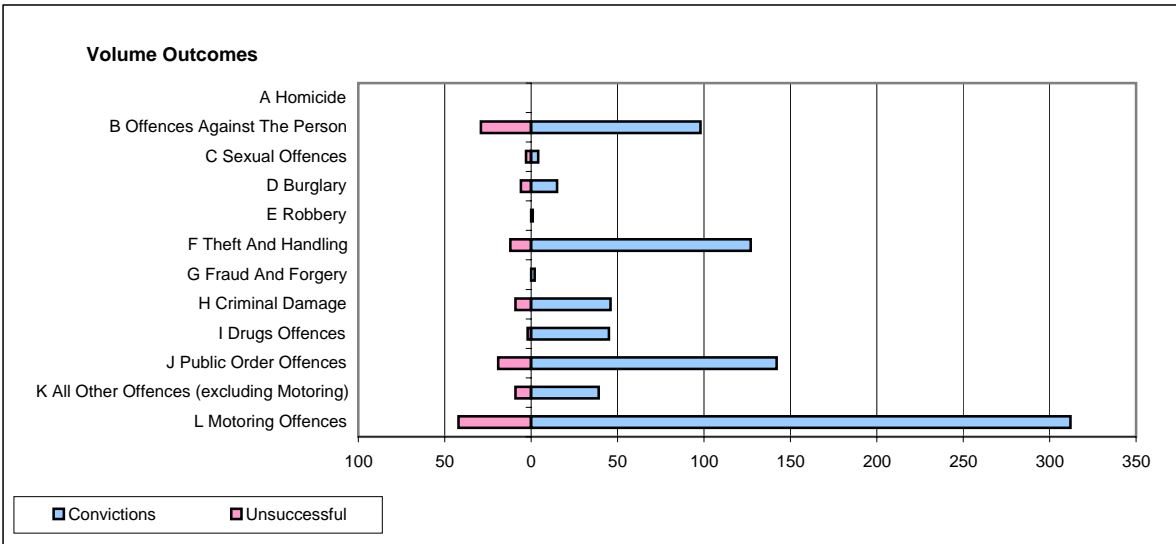
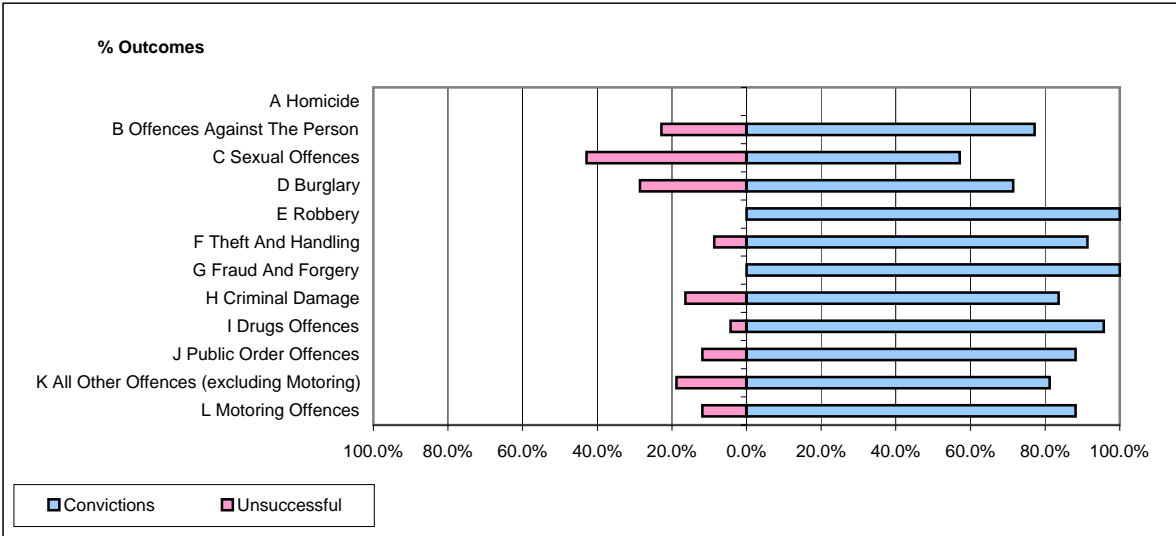


CPS OUTCOMES BY PRINCIPAL OFFENCE CATEGORY

November 2007

P16-Gwent



	Convictions		Unsuccessful	
	Number of Defendants	%	Number of Defendants	%
A Homicide	0	0	0	0
B Offences Against The Person	98	77.2%	29	22.8%
C Sexual Offences	4	57.1%	3	42.9%
D Burglary	15	71.4%	6	28.6%
E Robbery	1	100.0%	0	0.0%
F Theft And Handling	127	91.4%	12	8.6%
G Fraud And Forgery	2	100.0%	0	0.0%
H Criminal Damage	46	83.6%	9	16.4%
I Drugs Offences	45	95.7%	2	4.3%
J Public Order Offences	142	88.2%	19	11.8%
K All Other Offences (excluding Motoring)	39	81.3%	9	18.8%
L Motoring Offences	312	88.1%	42	11.9%
Admin Finalisations	0	0.0%	10	100.0%
TOTAL	831	85.5%	141	14.5%