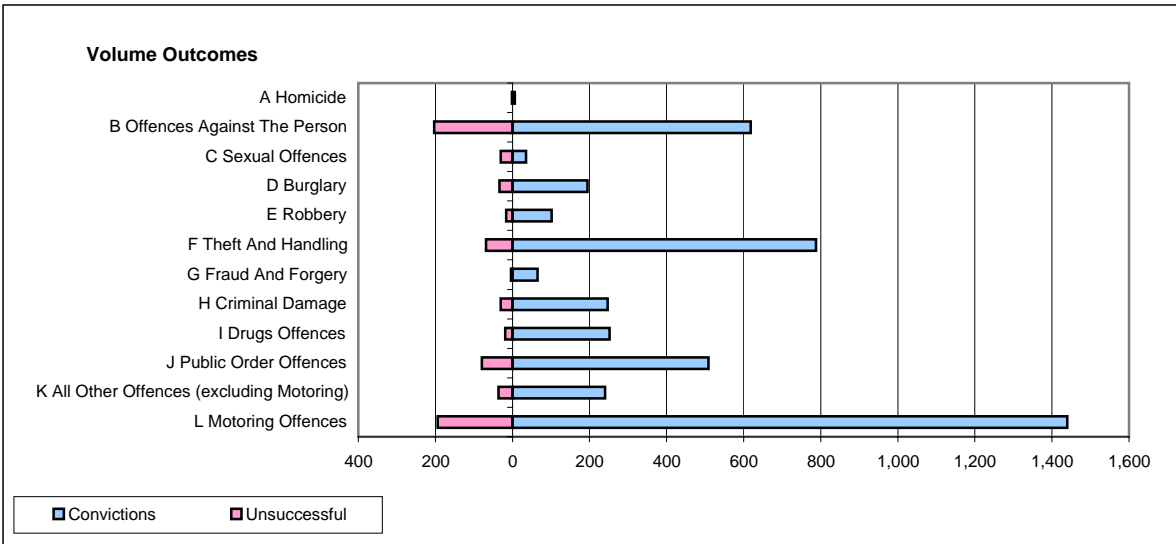
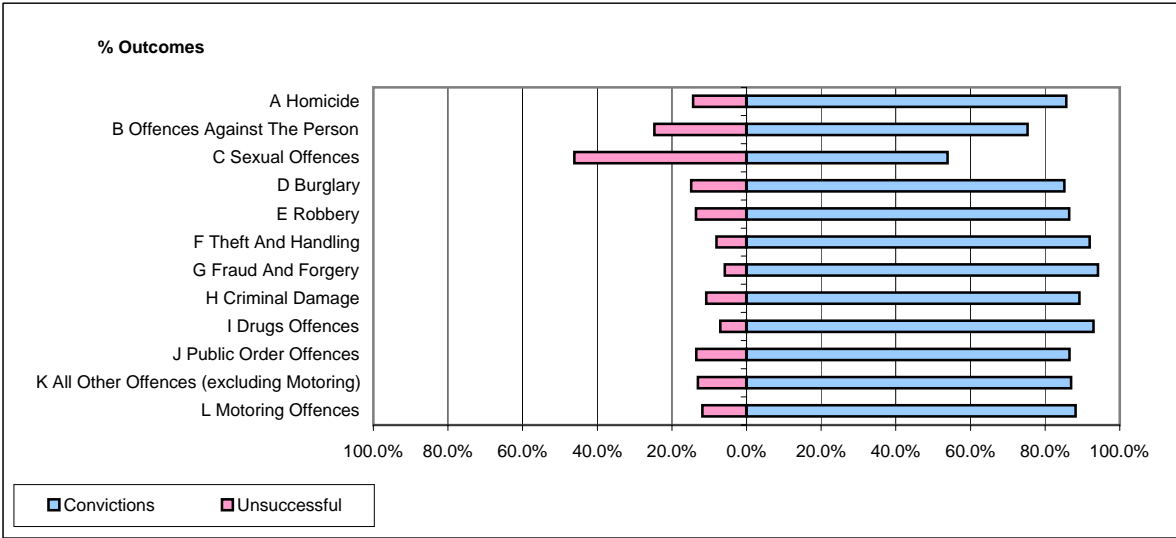


CPS OUTCOMES BY PRINCIPAL OFFENCE CATEGORY

November 2007

P15-GreaterManchester



	Convictions		Unsuccessful	
	Number of Defendants	%	Number of Defendants	%
A Homicide	6	85.7%	1	14.3%
B Offences Against The Person	618	75.3%	203	24.7%
C Sexual Offences	35	53.8%	30	46.2%
D Burglary	195	85.2%	34	14.8%
E Robbery	102	86.4%	16	13.6%
F Theft And Handling	788	91.9%	69	8.1%
G Fraud And Forgery	65	94.2%	4	5.8%
H Criminal Damage	247	89.2%	30	10.8%
I Drugs Offences	252	93.0%	19	7.0%
J Public Order Offences	509	86.6%	79	13.4%
K All Other Offences (excluding Motoring)	240	87.0%	36	13.0%
L Motoring Offences	1,440	88.1%	194	11.9%
Admin Finalisations	0	0.0%	130	100.0%
TOTAL	4,497	84.2%	845	15.8%