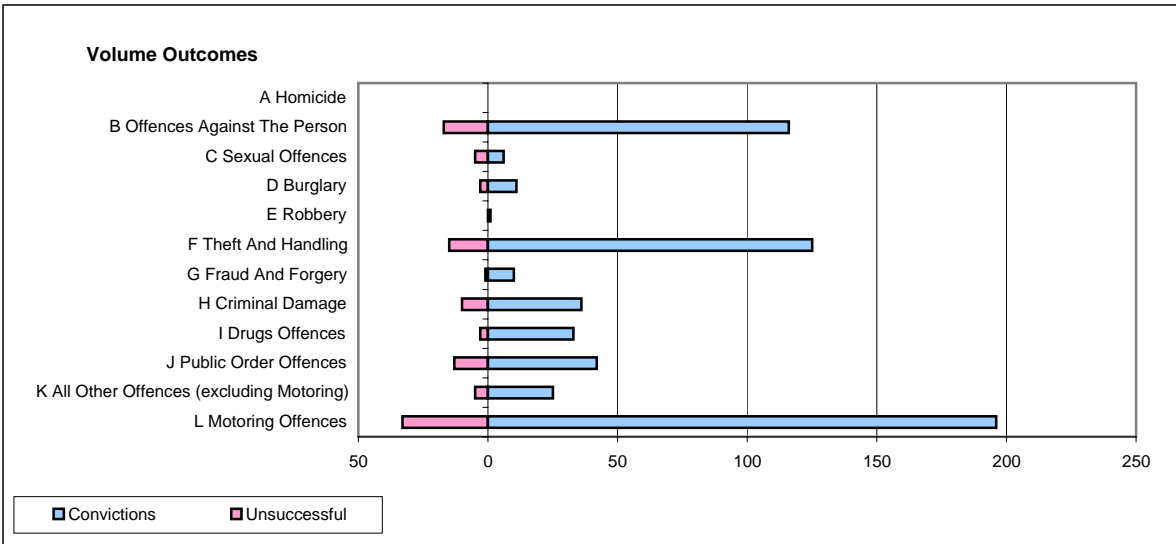
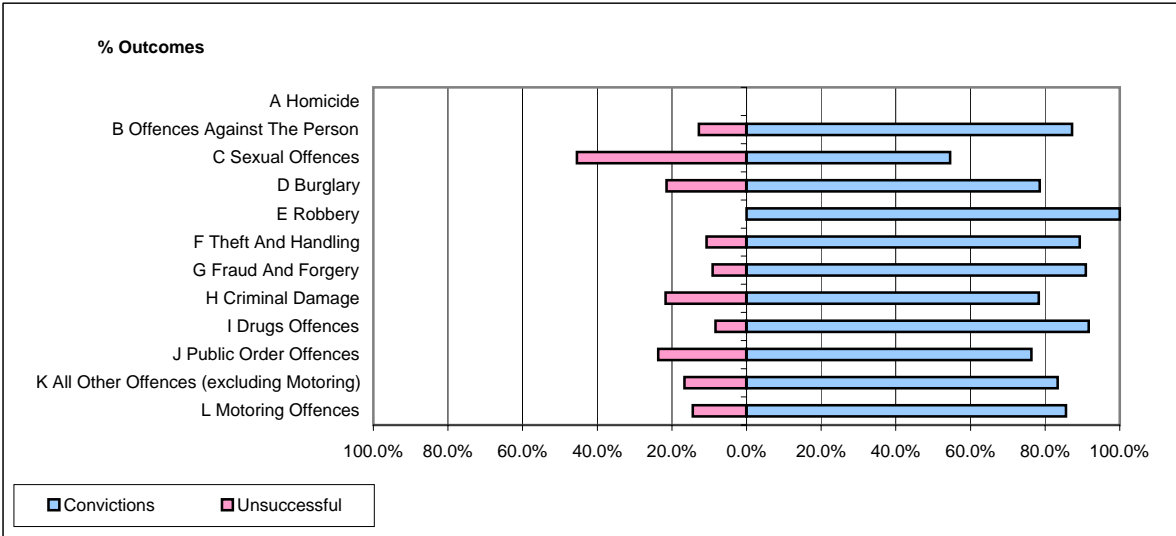


CPS OUTCOMES BY PRINCIPAL OFFENCE CATEGORY

November 2007

P14-Gloucestershire



	Convictions		Unsuccessful	
	Number of Defendants	%	Number of Defendants	%
A Homicide	0	0	0	0
B Offences Against The Person	116	87.2%	17	12.8%
C Sexual Offences	6	54.5%	5	45.5%
D Burglary	11	78.6%	3	21.4%
E Robbery	1	100.0%	0	0.0%
F Theft And Handling	125	89.3%	15	10.7%
G Fraud And Forgery	10	90.9%	1	9.1%
H Criminal Damage	36	78.3%	10	21.7%
I Drugs Offences	33	91.7%	3	8.3%
J Public Order Offences	42	76.4%	13	23.6%
K All Other Offences (excluding Motoring)	25	83.3%	5	16.7%
L Motoring Offences	196	85.6%	33	14.4%
Admin Finalisations	0	0.0%	16	100.0%
TOTAL	601	83.2%	121	16.8%