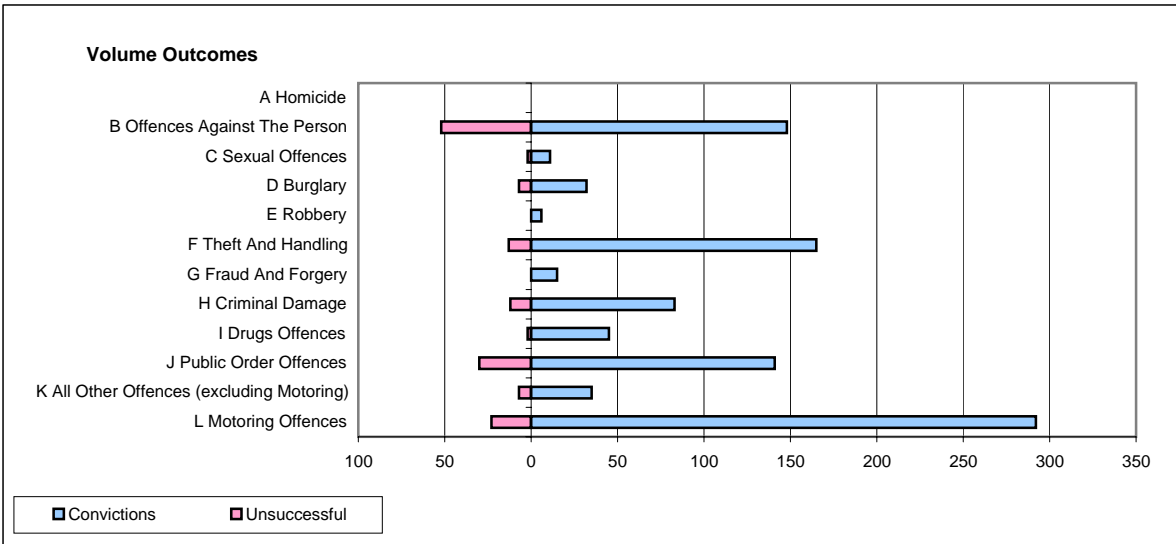
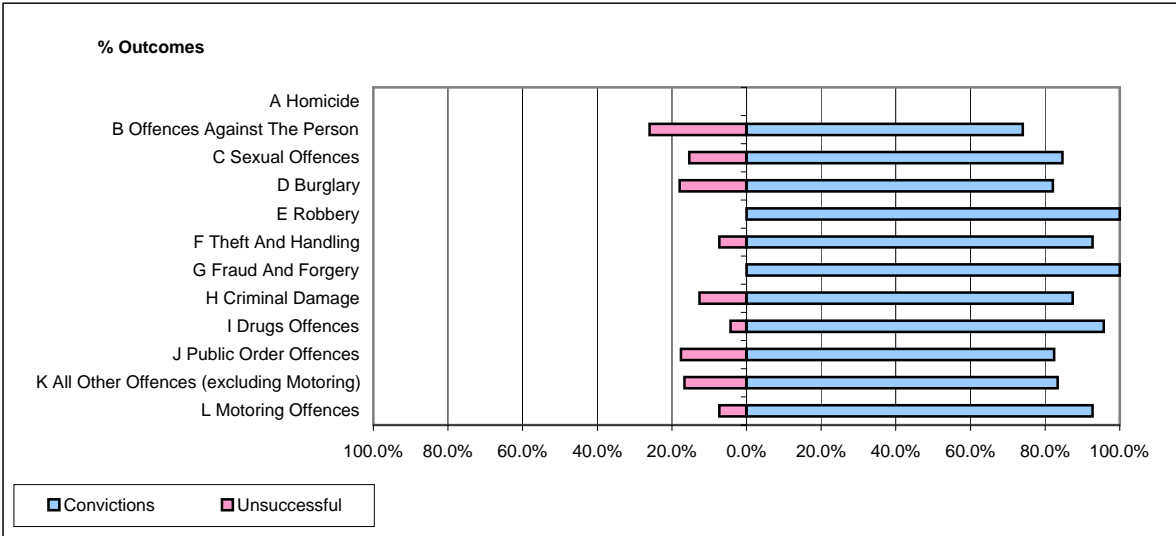


CPS OUTCOMES BY PRINCIPAL OFFENCE CATEGORY

November 2007

P11-Durham



	Convictions		Unsuccessful	
	Number of Defendants	%	Number of Defendants	%
A Homicide	0	0	0	0
B Offences Against The Person	148	74.0%	52	26.0%
C Sexual Offences	11	84.6%	2	15.4%
D Burglary	32	82.1%	7	17.9%
E Robbery	6	100.0%	0	0.0%
F Theft And Handling	165	92.7%	13	7.3%
G Fraud And Forgery	15	100.0%	0	0.0%
H Criminal Damage	83	87.4%	12	12.6%
I Drugs Offences	45	95.7%	2	4.3%
J Public Order Offences	141	82.5%	30	17.5%
K All Other Offences (excluding Motoring)	35	83.3%	7	16.7%
L Motoring Offences	292	92.7%	23	7.3%
Admin Finalisations	0	0.0%	11	100.0%
TOTAL	973	86.0%	159	14.0%