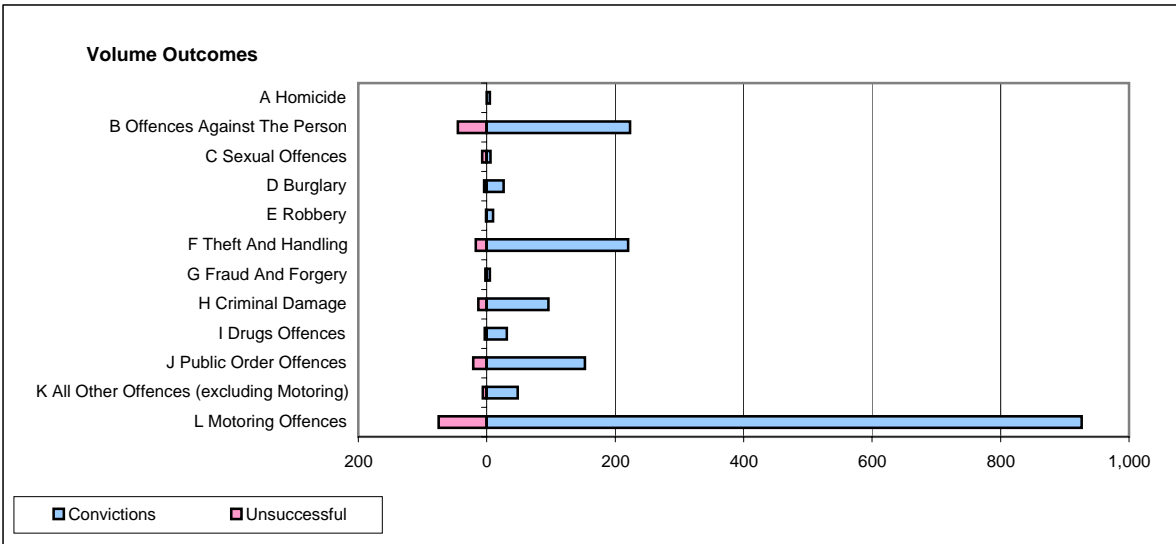
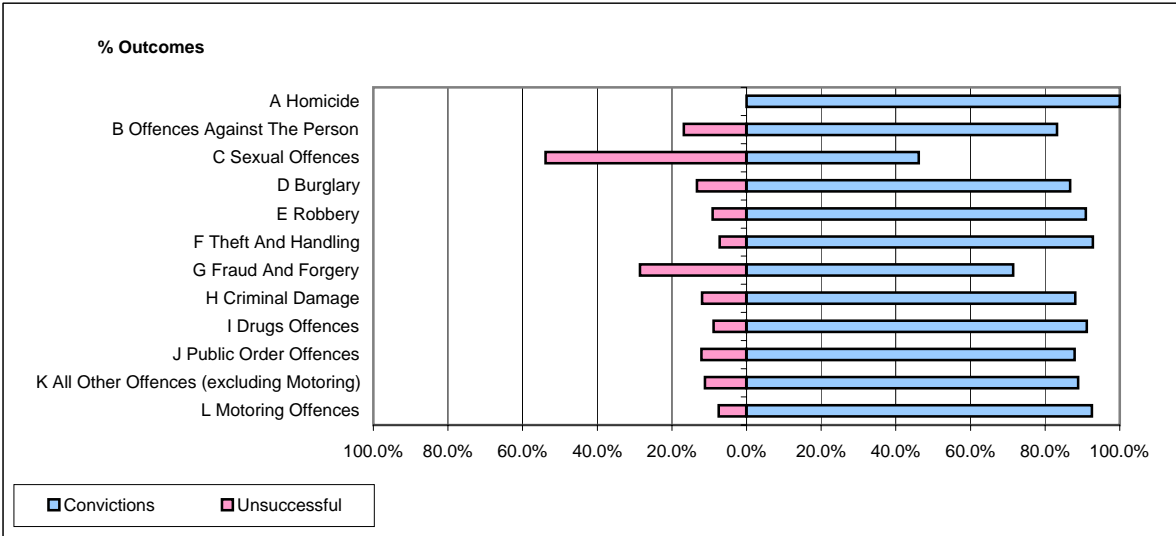


**CPS OUTCOMES BY PRINCIPAL OFFENCE CATEGORY**

**November 2007**

**P04-Cheshire**



	Convictions		Unsuccessful	
	Number of Defendants	%	Number of Defendants	%
<b>A Homicide</b>	<b>5</b>	<b>100.0%</b>	<b>0</b>	<b>0.0%</b>
<b>B Offences Against The Person</b>	<b>223</b>	<b>83.2%</b>	<b>45</b>	<b>16.8%</b>
<b>C Sexual Offences</b>	<b>6</b>	<b>46.2%</b>	<b>7</b>	<b>53.8%</b>
<b>D Burglary</b>	<b>26</b>	<b>86.7%</b>	<b>4</b>	<b>13.3%</b>
<b>E Robbery</b>	<b>10</b>	<b>90.9%</b>	<b>1</b>	<b>9.1%</b>
<b>F Theft And Handling</b>	<b>220</b>	<b>92.8%</b>	<b>17</b>	<b>7.2%</b>
<b>G Fraud And Forgery</b>	<b>5</b>	<b>71.4%</b>	<b>2</b>	<b>28.6%</b>
<b>H Criminal Damage</b>	<b>96</b>	<b>88.1%</b>	<b>13</b>	<b>11.9%</b>
<b>I Drugs Offences</b>	<b>31</b>	<b>91.2%</b>	<b>3</b>	<b>8.8%</b>
<b>J Public Order Offences</b>	<b>153</b>	<b>87.9%</b>	<b>21</b>	<b>12.1%</b>
<b>K All Other Offences (excluding Motoring)</b>	<b>48</b>	<b>88.9%</b>	<b>6</b>	<b>11.1%</b>
<b>L Motoring Offences</b>	<b>926</b>	<b>92.5%</b>	<b>75</b>	<b>7.5%</b>
<b>Admin Finalisations</b>	<b>0</b>	<b>0.0%</b>	<b>21</b>	<b>100.0%</b>
<b>TOTAL</b>	<b>1,749</b>	<b>89.1%</b>	<b>215</b>	<b>10.9%</b>