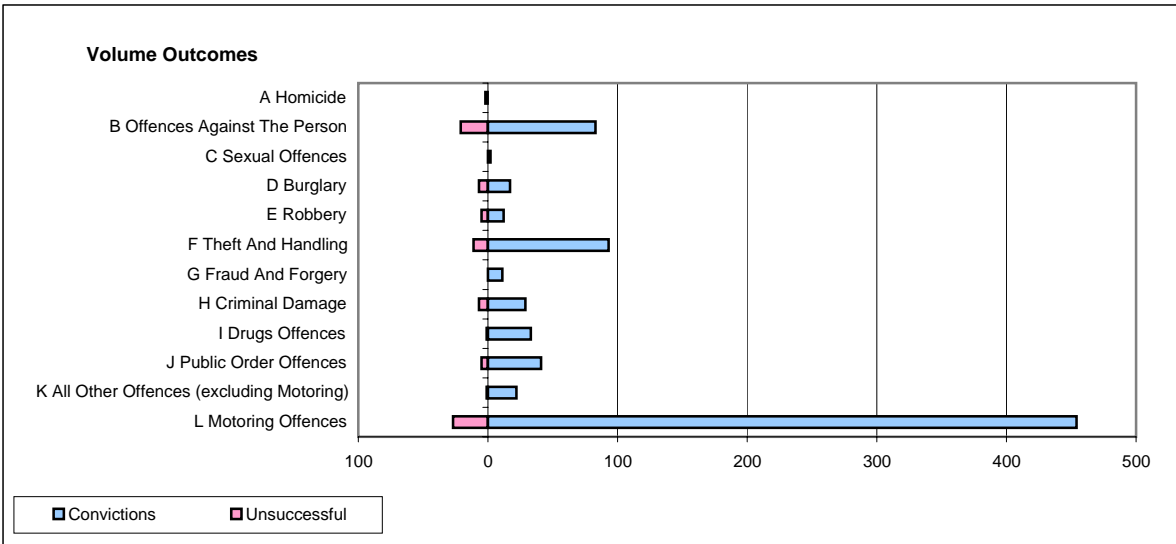
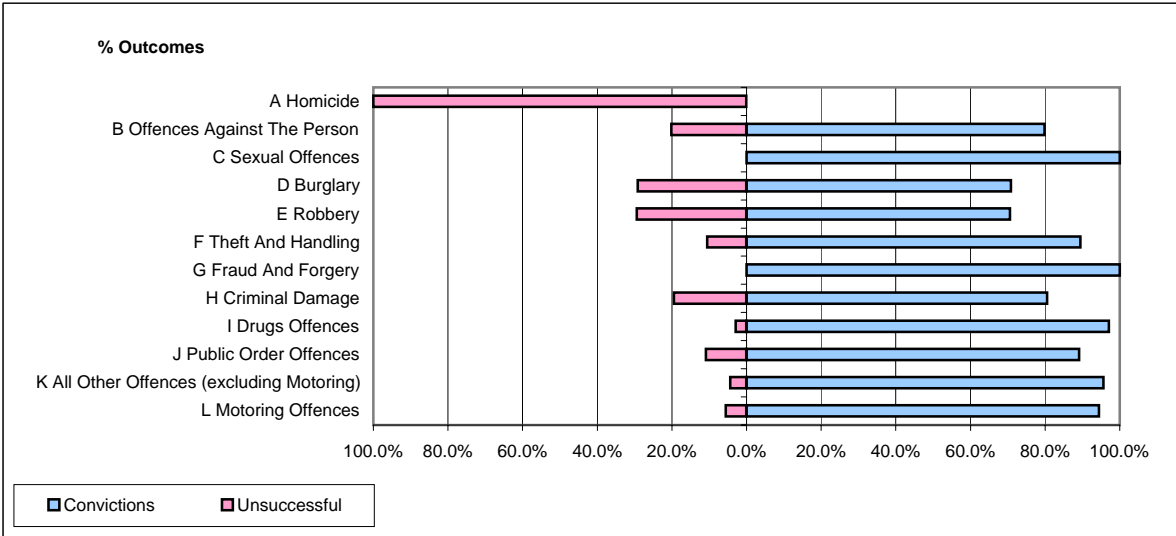


CPS OUTCOMES BY PRINCIPAL OFFENCE CATEGORY

November 2007

P02-Bedfordshire



	Convictions		Unsuccessful	
	Number of Defendants	%	Number of Defendants	%
A Homicide	0	0.0%	2	100.0%
B Offences Against The Person	83	79.8%	21	20.2%
C Sexual Offences	2	100.0%	0	0.0%
D Burglary	17	70.8%	7	29.2%
E Robbery	12	70.6%	5	29.4%
F Theft And Handling	93	89.4%	11	10.6%
G Fraud And Forgery	11	100.0%	0	0.0%
H Criminal Damage	29	80.6%	7	19.4%
I Drugs Offences	33	97.1%	1	2.9%
J Public Order Offences	41	89.1%	5	10.9%
K All Other Offences (excluding Motoring)	22	95.7%	1	4.3%
L Motoring Offences	454	94.4%	27	5.6%
Admin Finalisations	0	0.0%	10	100.0%
TOTAL	797	89.1%	97	10.9%