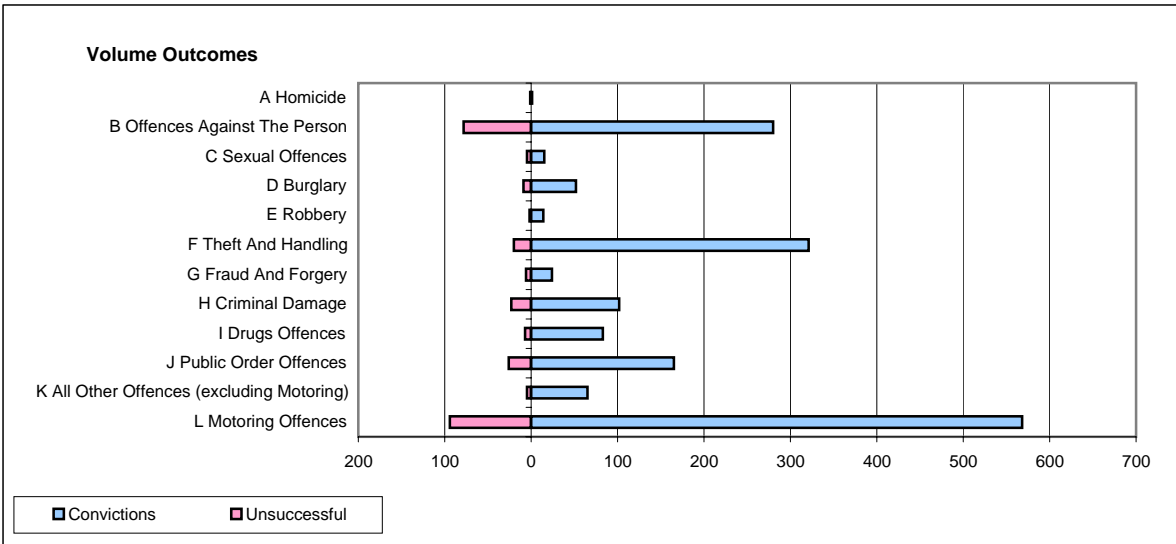
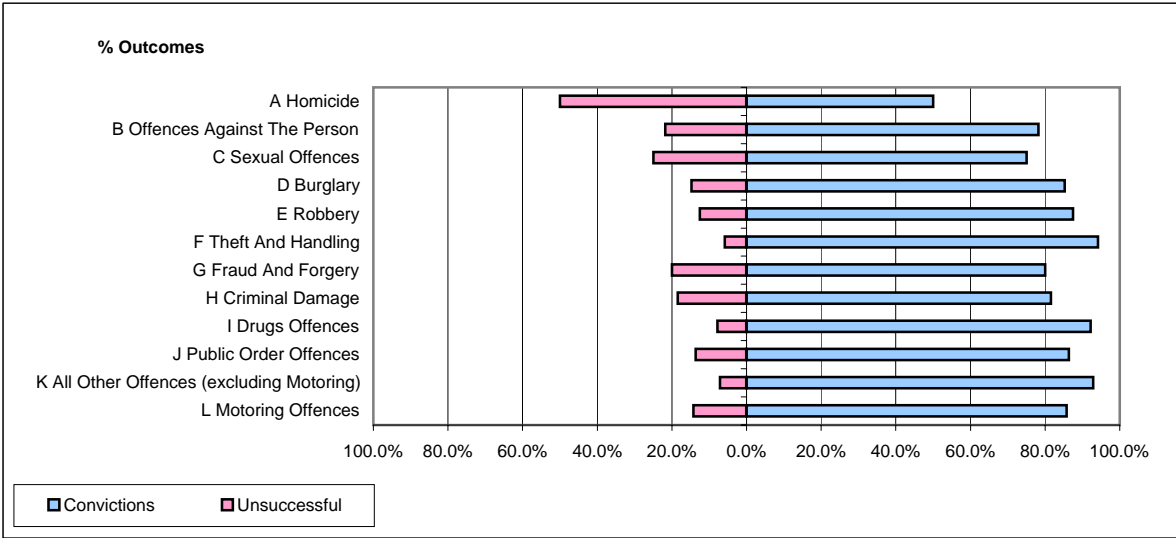


CPS OUTCOMES BY PRINCIPAL OFFENCE CATEGORY

November 2007

P01-Avon&Somerset



| | Convictions | | Unsuccessful | |
|--|----------------------|--------------|----------------------|---------------|
| | Number of Defendants | % | Number of Defendants | % |
| A Homicide | 1 | 50.0% | 1 | 50.0% |
| B Offences Against The Person | 280 | 78.2% | 78 | 21.8% |
| C Sexual Offences | 15 | 75.0% | 5 | 25.0% |
| D Burglary | 52 | 85.2% | 9 | 14.8% |
| E Robbery | 14 | 87.5% | 2 | 12.5% |
| F Theft And Handling | 321 | 94.1% | 20 | 5.9% |
| G Fraud And Forgery | 24 | 80.0% | 6 | 20.0% |
| H Criminal Damage | 102 | 81.6% | 23 | 18.4% |
| I Drugs Offences | 83 | 92.2% | 7 | 7.8% |
| J Public Order Offences | 165 | 86.4% | 26 | 13.6% |
| K All Other Offences (excluding Motoring) | 65 | 92.9% | 5 | 7.1% |
| L Motoring Offences | 568 | 85.8% | 94 | 14.2% |
| Admin Finalisations | 0 | 0.0% | 76 | 100.0% |
| TOTAL | 1,690 | 82.8% | 352 | 17.2% |