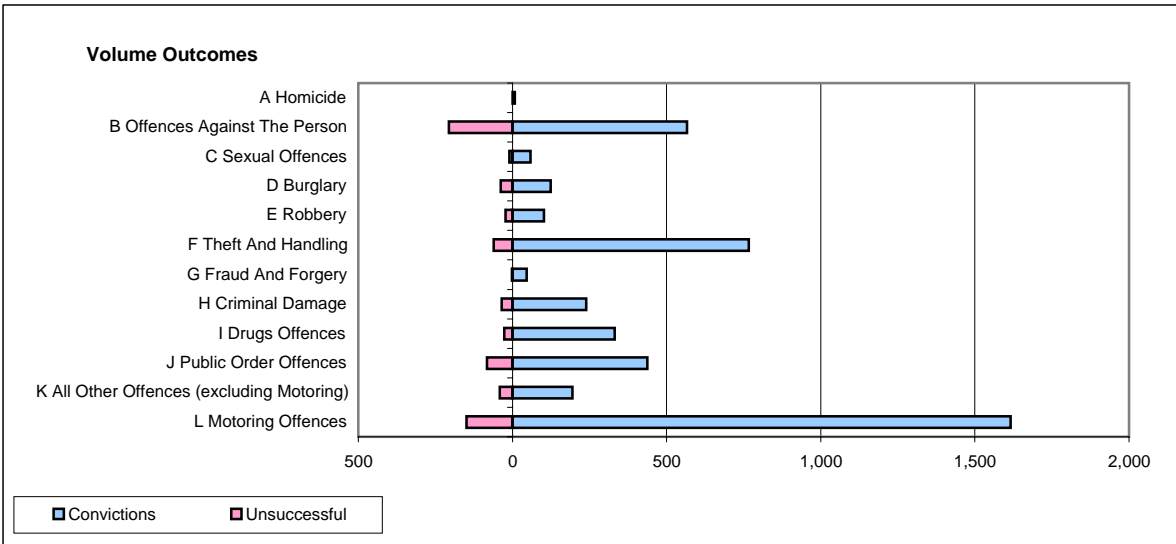
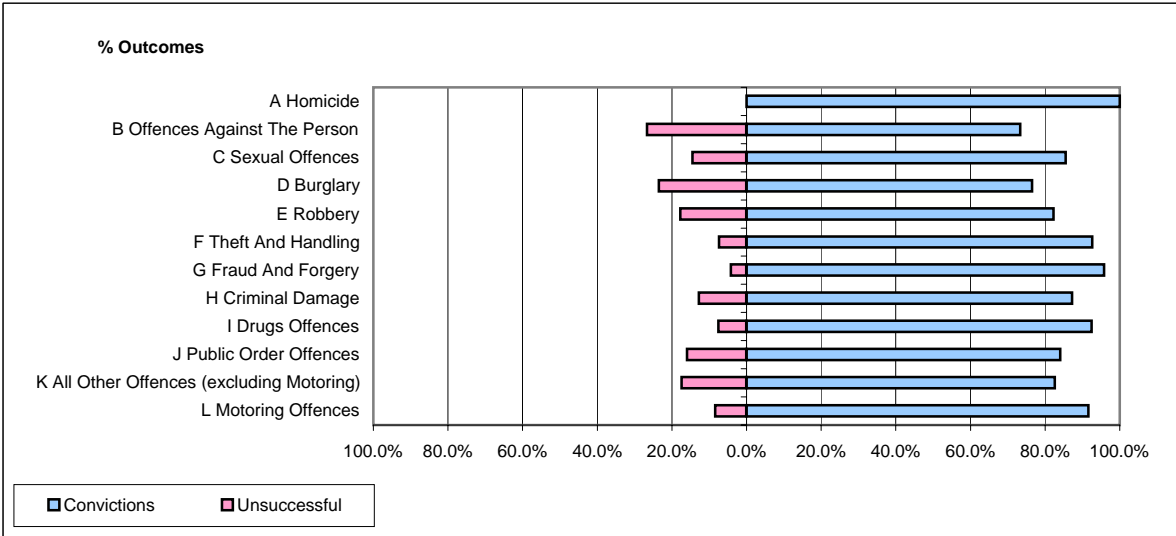


CPS OUTCOMES BY PRINCIPAL OFFENCE CATEGORY

October 2007

P41-WestMidlands



	Convictions		Unsuccessful	
	Number of Defendants	%	Number of Defendants	%
A Homicide	8	100.0%	0	0.0%
B Offences Against The Person	566	73.3%	206	26.7%
C Sexual Offences	59	85.5%	10	14.5%
D Burglary	124	76.5%	38	23.5%
E Robbery	102	82.3%	22	17.7%
F Theft And Handling	767	92.6%	61	7.4%
G Fraud And Forgery	46	95.8%	2	4.2%
H Criminal Damage	239	87.2%	35	12.8%
I Drugs Offences	332	92.5%	27	7.5%
J Public Order Offences	438	84.1%	83	15.9%
K All Other Offences (excluding Motoring)	195	82.6%	41	17.4%
L Motoring Offences	1,616	91.6%	149	8.4%
Admin Finalisations	0	0.0%	78	100.0%
TOTAL	4,492	85.7%	752	14.3%