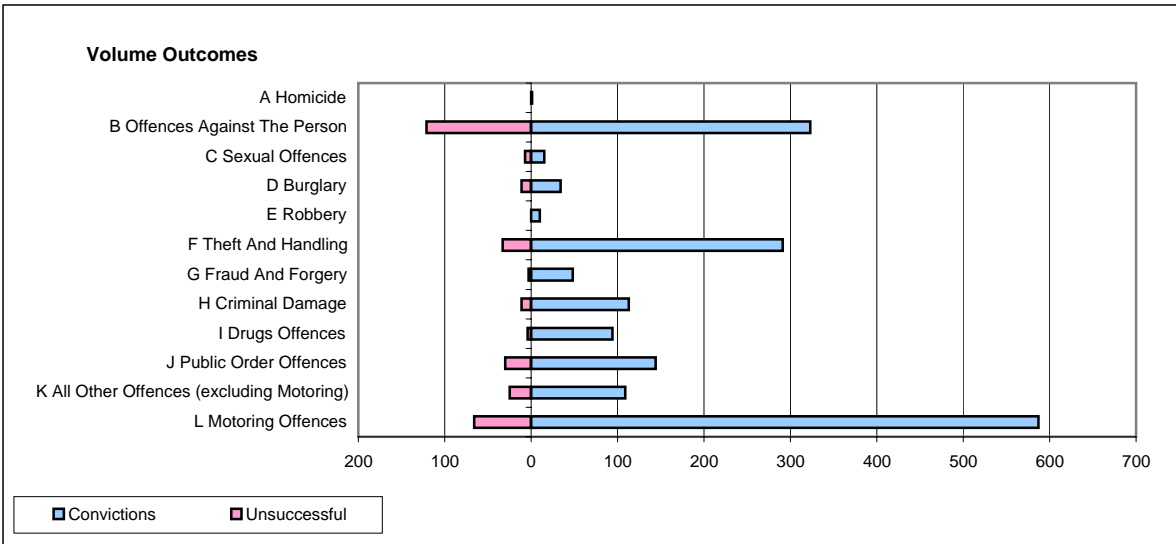
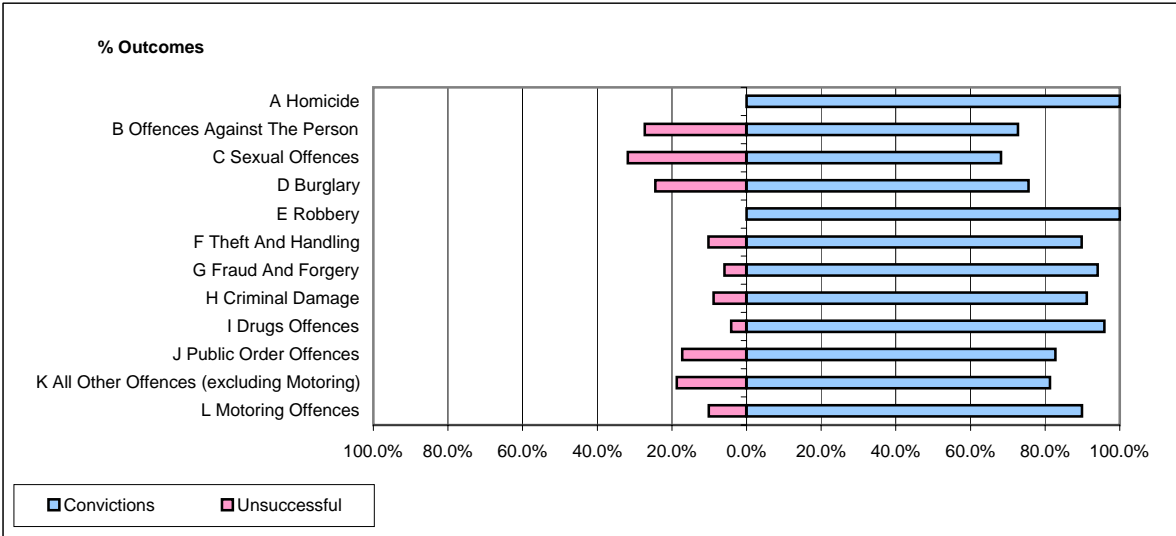


CPS OUTCOMES BY PRINCIPAL OFFENCE CATEGORY

October 2007

P37-Sussex



	Convictions		Unsuccessful	
	Number of Defendants	%	Number of Defendants	%
A Homicide	1	100.0%	0	0.0%
B Offences Against The Person	323	72.7%	121	27.3%
C Sexual Offences	15	68.2%	7	31.8%
D Burglary	34	75.6%	11	24.4%
E Robbery	10	100.0%	0	0.0%
F Theft And Handling	291	89.8%	33	10.2%
G Fraud And Forgery	48	94.1%	3	5.9%
H Criminal Damage	113	91.1%	11	8.9%
I Drugs Offences	94	95.9%	4	4.1%
J Public Order Offences	144	82.8%	30	17.2%
K All Other Offences (excluding Motoring)	109	81.3%	25	18.7%
L Motoring Offences	587	89.9%	66	10.1%
Admin Finalisations	0	0.0%	35	100.0%
TOTAL	1,769	83.6%	346	16.4%