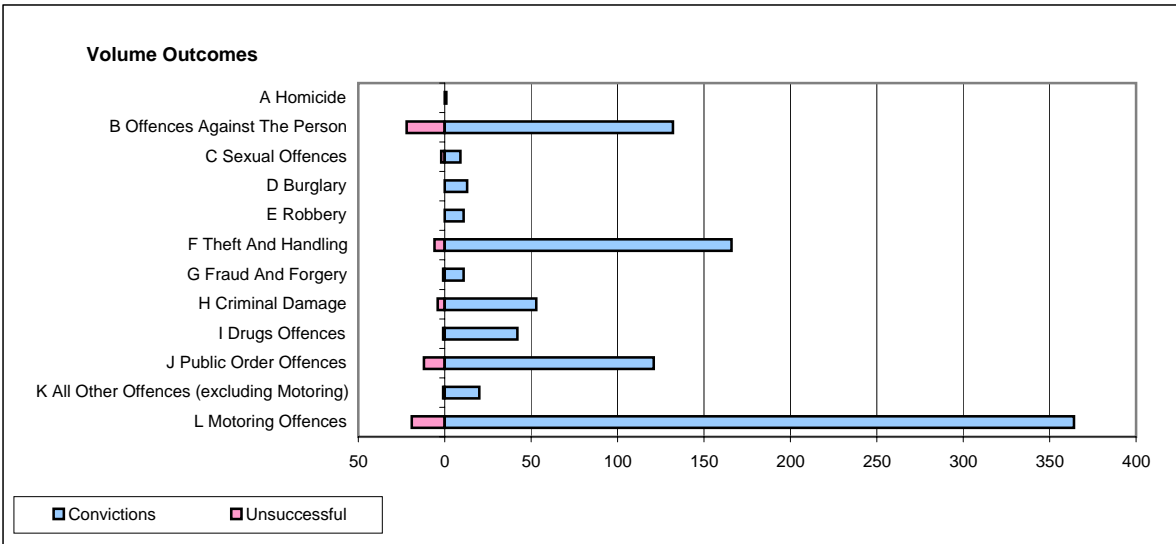
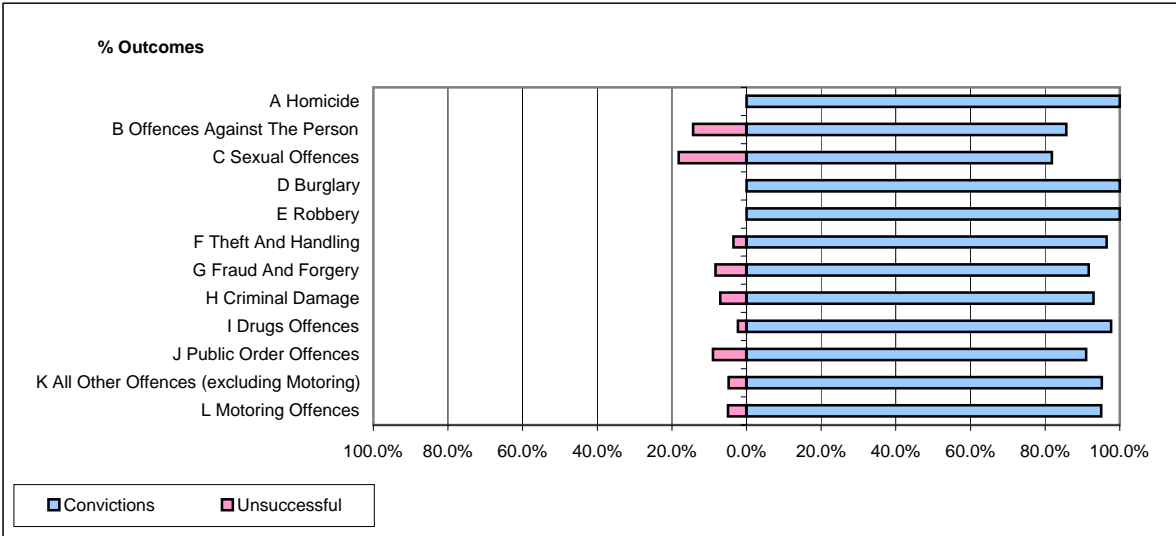


CPS OUTCOMES BY PRINCIPAL OFFENCE CATEGORY

October 2007

P35-Suffolk



	Convictions		Unsuccessful	
	Number of Defendants	%	Number of Defendants	%
A Homicide	1	100.0%	0	0.0%
B Offences Against The Person	132	85.7%	22	14.3%
C Sexual Offences	9	81.8%	2	18.2%
D Burglary	13	100.0%	0	0.0%
E Robbery	11	100.0%	0	0.0%
F Theft And Handling	166	96.5%	6	3.5%
G Fraud And Forgery	11	91.7%	1	8.3%
H Criminal Damage	53	93.0%	4	7.0%
I Drugs Offences	42	97.7%	1	2.3%
J Public Order Offences	121	91.0%	12	9.0%
K All Other Offences (excluding Motoring)	20	95.2%	1	4.8%
L Motoring Offences	364	95.0%	19	5.0%
Admin Finalisations	0	0.0%	10	100.0%
TOTAL	943	92.4%	78	7.6%