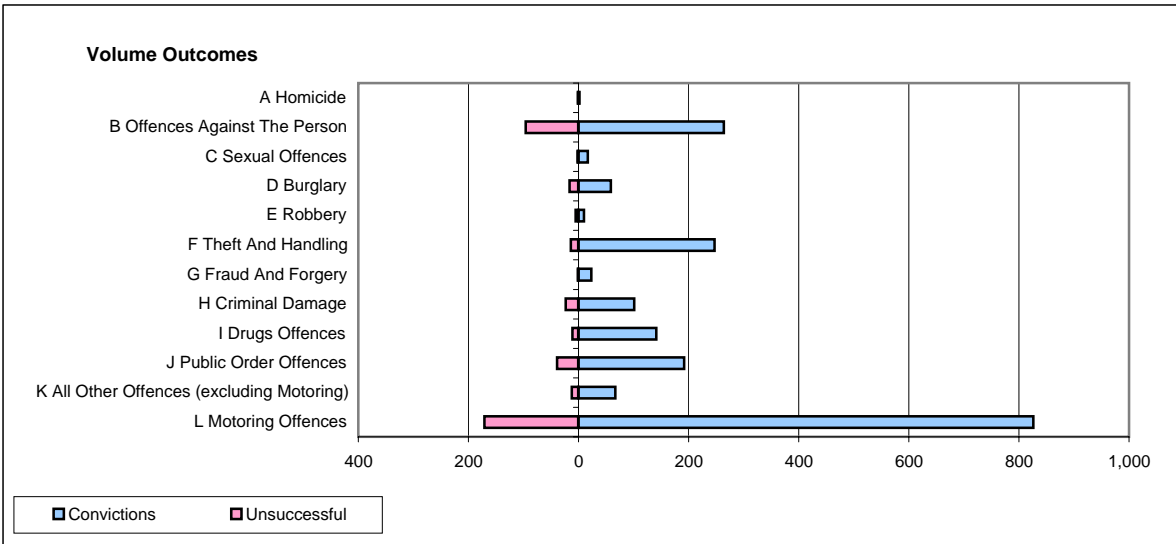
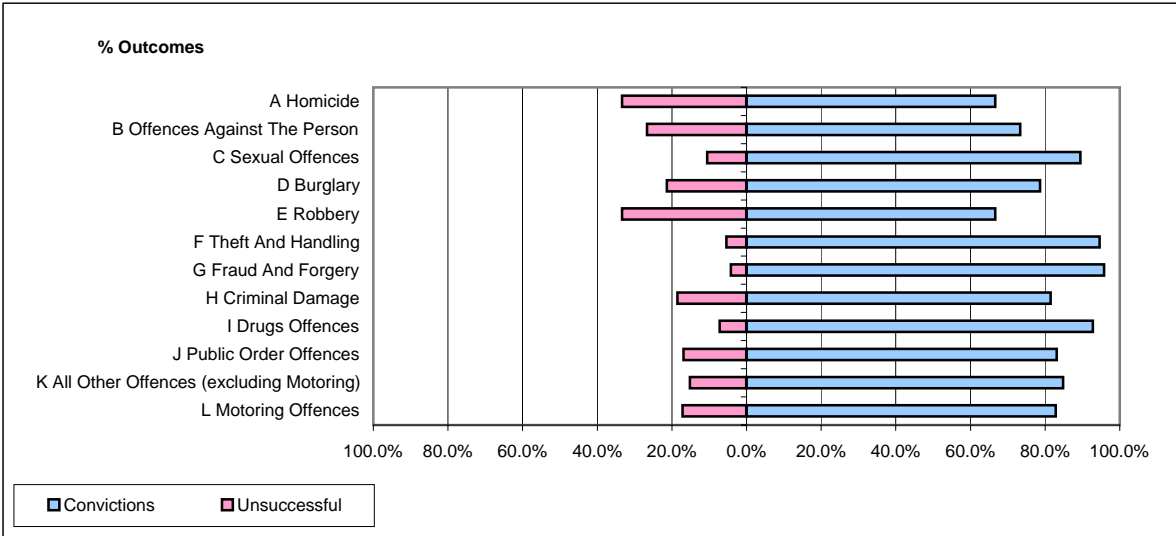


CPS OUTCOMES BY PRINCIPAL OFFENCE CATEGORY

October 2007

P32-SouthWales



	Convictions		Unsuccessful	
	Number of Defendants	%	Number of Defendants	%
A Homicide	2	66.7%	1	33.3%
B Offences Against The Person	264	73.3%	96	26.7%
C Sexual Offences	17	89.5%	2	10.5%
D Burglary	59	78.7%	16	21.3%
E Robbery	10	66.7%	5	33.3%
F Theft And Handling	247	94.6%	14	5.4%
G Fraud And Forgery	23	95.8%	1	4.2%
H Criminal Damage	101	81.5%	23	18.5%
I Drugs Offences	141	92.8%	11	7.2%
J Public Order Offences	192	83.1%	39	16.9%
K All Other Offences (excluding Motoring)	67	84.8%	12	15.2%
L Motoring Offences	826	82.8%	171	17.2%
Admin Finalisations	0	0.0%	68	100.0%
TOTAL	1,949	80.9%	459	19.1%