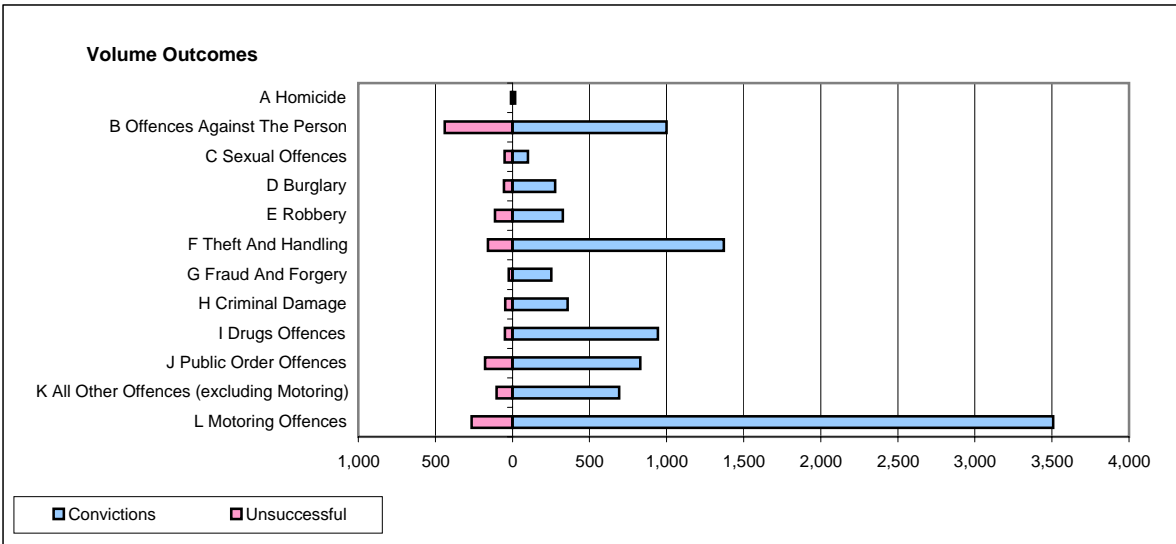
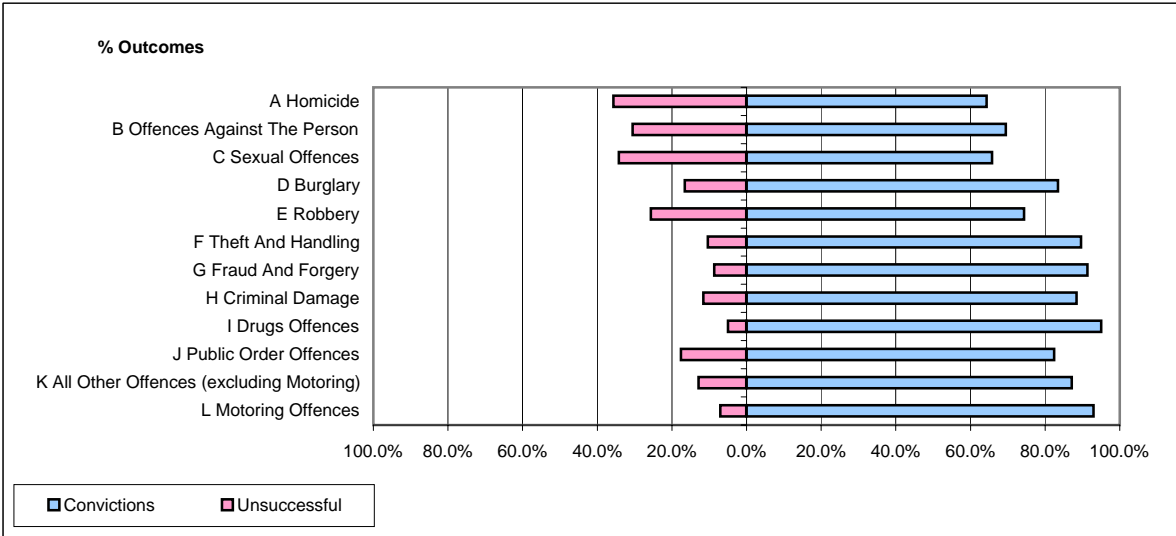


CPS OUTCOMES BY PRINCIPAL OFFENCE CATEGORY

October 2007

P25-Metropolitan&City



	Convictions		Unsuccessful	
	Number of Defendants	%	Number of Defendants	%
A Homicide	18	64.3%	10	35.7%
B Offences Against The Person	1,000	69.5%	439	30.5%
C Sexual Offences	100	65.8%	52	34.2%
D Burglary	277	83.4%	55	16.6%
E Robbery	327	74.3%	113	25.7%
F Theft And Handling	1,371	89.6%	159	10.4%
G Fraud And Forgery	253	91.3%	24	8.7%
H Criminal Damage	358	88.4%	47	11.6%
I Drugs Offences	943	95.1%	49	4.9%
J Public Order Offences	829	82.4%	177	17.6%
K All Other Offences (excluding Motoring)	692	87.2%	102	12.8%
L Motoring Offences	3,508	93.0%	265	7.0%
Admin Finalisations	0	0.0%	478	100.0%
TOTAL	9,676	83.1%	1,970	16.9%