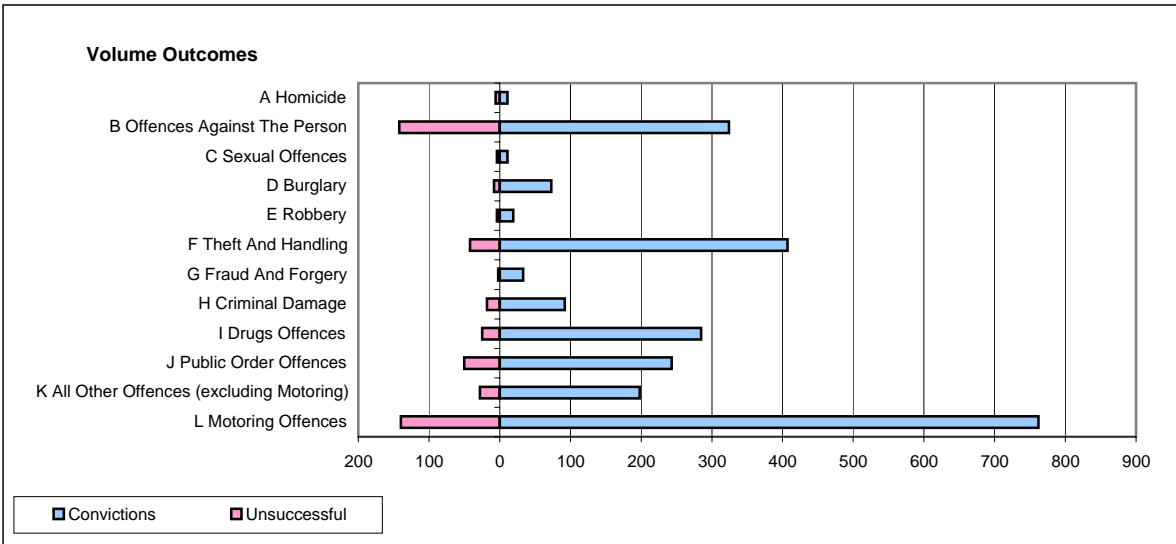
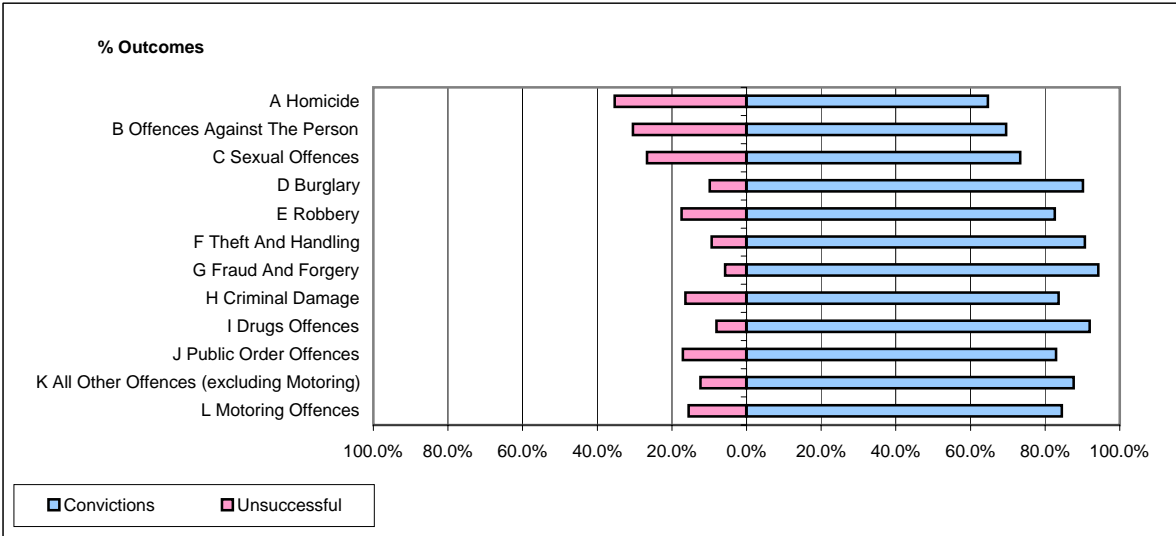


**CPS OUTCOMES BY PRINCIPAL OFFENCE CATEGORY**

**October 2007**

**P24-Merseyside**



	Convictions		Unsuccessful	
	Number of Defendants	%	Number of Defendants	%
<b>A Homicide</b>	11	64.7%	6	35.3%
<b>B Offences Against The Person</b>	324	69.5%	142	30.5%
<b>C Sexual Offences</b>	11	73.3%	4	26.7%
<b>D Burglary</b>	73	90.1%	8	9.9%
<b>E Robbery</b>	19	82.6%	4	17.4%
<b>F Theft And Handling</b>	407	90.6%	42	9.4%
<b>G Fraud And Forgery</b>	33	94.3%	2	5.7%
<b>H Criminal Damage</b>	92	83.6%	18	16.4%
<b>I Drugs Offences</b>	285	91.9%	25	8.1%
<b>J Public Order Offences</b>	243	82.9%	50	17.1%
<b>K All Other Offences (excluding Motoring)</b>	198	87.6%	28	12.4%
<b>L Motoring Offences</b>	762	84.5%	140	15.5%
<b>Admin Finalisations</b>	0	0.0%	36	100.0%
<b>TOTAL</b>	2,458	83.0%	505	17.0%