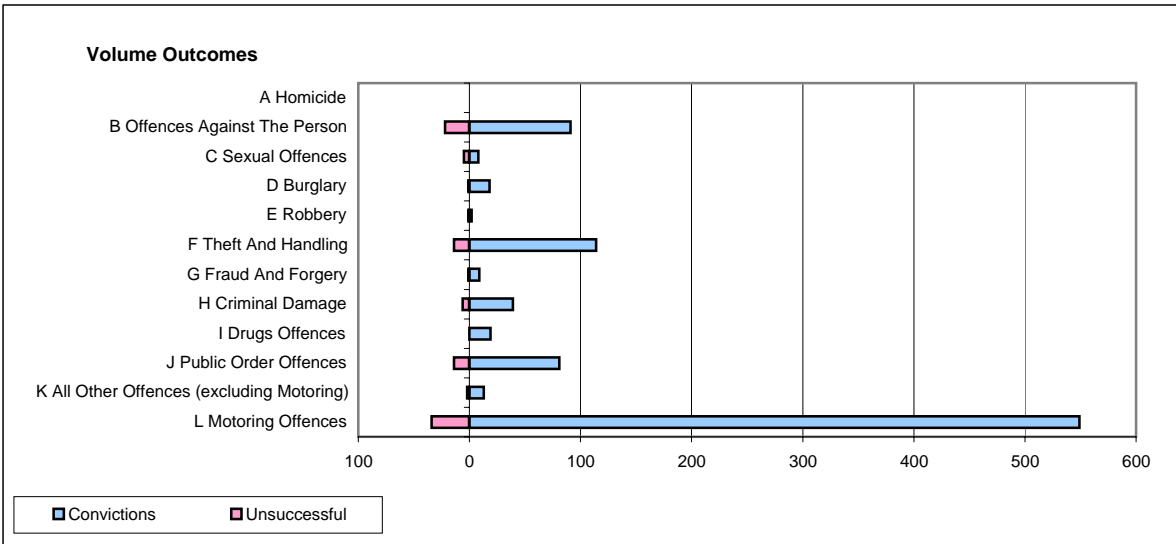
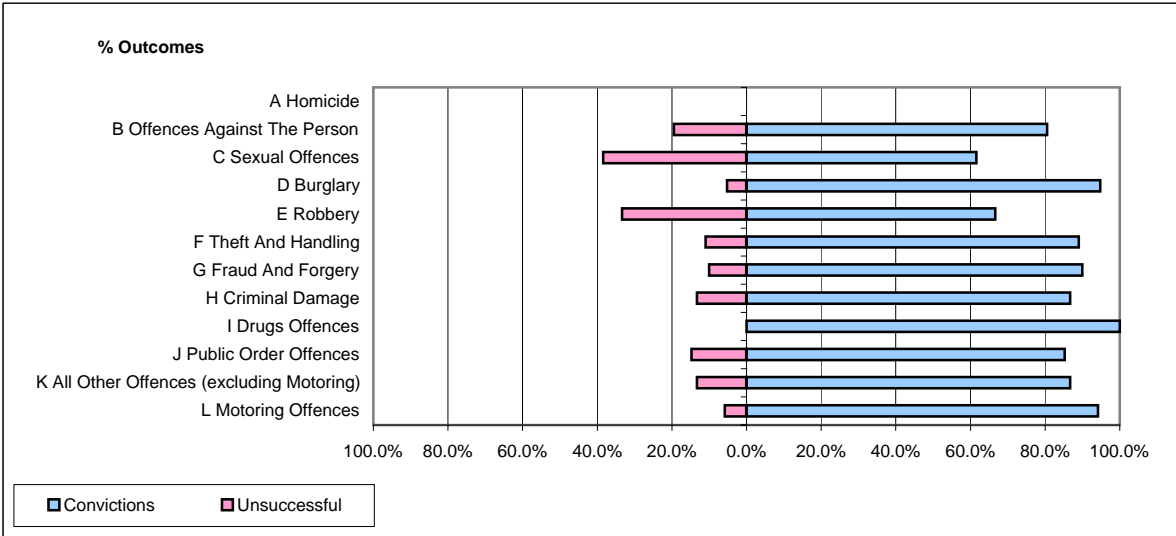


CPS OUTCOMES BY PRINCIPAL OFFENCE CATEGORY

October 2007

P23-Lincolnshire



	Convictions		Unsuccessful	
	Number of Defendants	%	Number of Defendants	%
A Homicide	0	0	0	0
B Offences Against The Person	91	80.5%	22	19.5%
C Sexual Offences	8	61.5%	5	38.5%
D Burglary	18	94.7%	1	5.3%
E Robbery	2	66.7%	1	33.3%
F Theft And Handling	114	89.1%	14	10.9%
G Fraud And Forgery	9	90.0%	1	10.0%
H Criminal Damage	39	86.7%	6	13.3%
I Drugs Offences	19	100.0%	0	0.0%
J Public Order Offences	81	85.3%	14	14.7%
K All Other Offences (excluding Motoring)	13	86.7%	2	13.3%
L Motoring Offences	549	94.2%	34	5.8%
Admin Finalisations	0	0.0%	9	100.0%
TOTAL	943	89.6%	109	10.4%