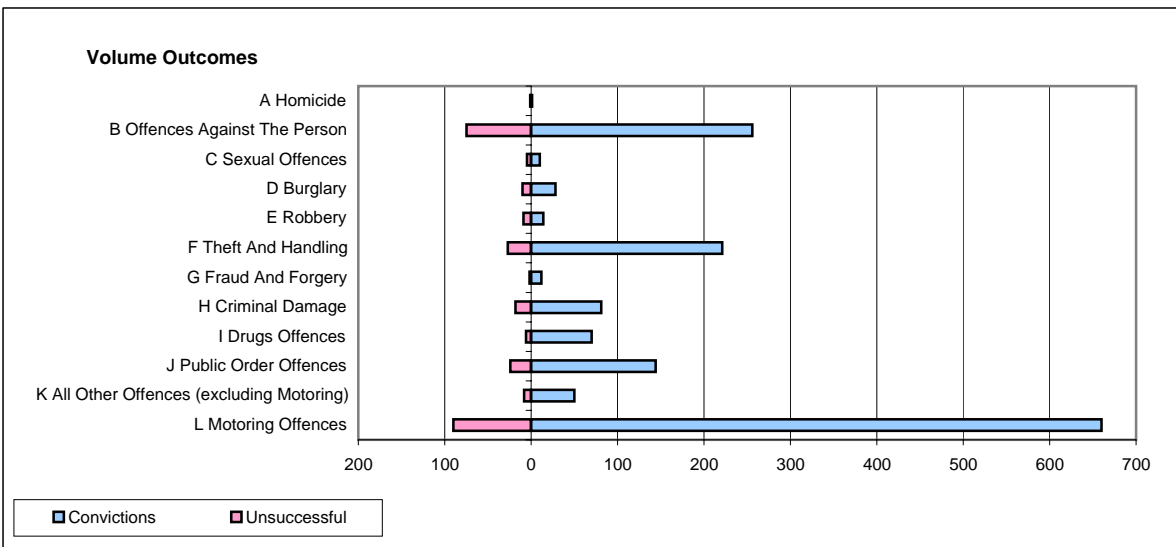
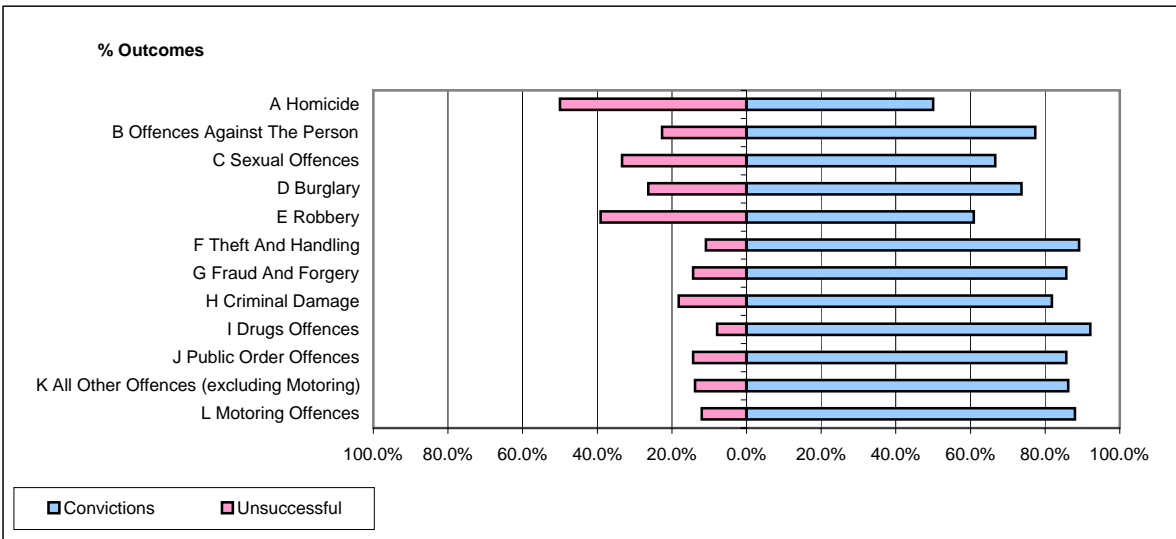


CPS OUTCOMES BY PRINCIPAL OFFENCE CATEGORY

October 2007

P22-Leicestershire



	Convictions		Unsuccessful	
	Number of Defendants	%	Number of Defendants	%
A Homicide	1	50.0%	1	50.0%
B Offences Against The Person	256	77.3%	75	22.7%
C Sexual Offences	10	66.7%	5	33.3%
D Burglary	28	73.7%	10	26.3%
E Robbery	14	60.9%	9	39.1%
F Theft And Handling	221	89.1%	27	10.9%
G Fraud And Forgery	12	85.7%	2	14.3%
H Criminal Damage	81	81.8%	18	18.2%
I Drugs Offences	70	92.1%	6	7.9%
J Public Order Offences	144	85.7%	24	14.3%
K All Other Offences (excluding Motoring)	50	86.2%	8	13.8%
L Motoring Offences	660	88.0%	90	12.0%
Admin Finalisations	0	0.0%	38	100.0%
TOTAL	1,547	83.2%	313	16.8%