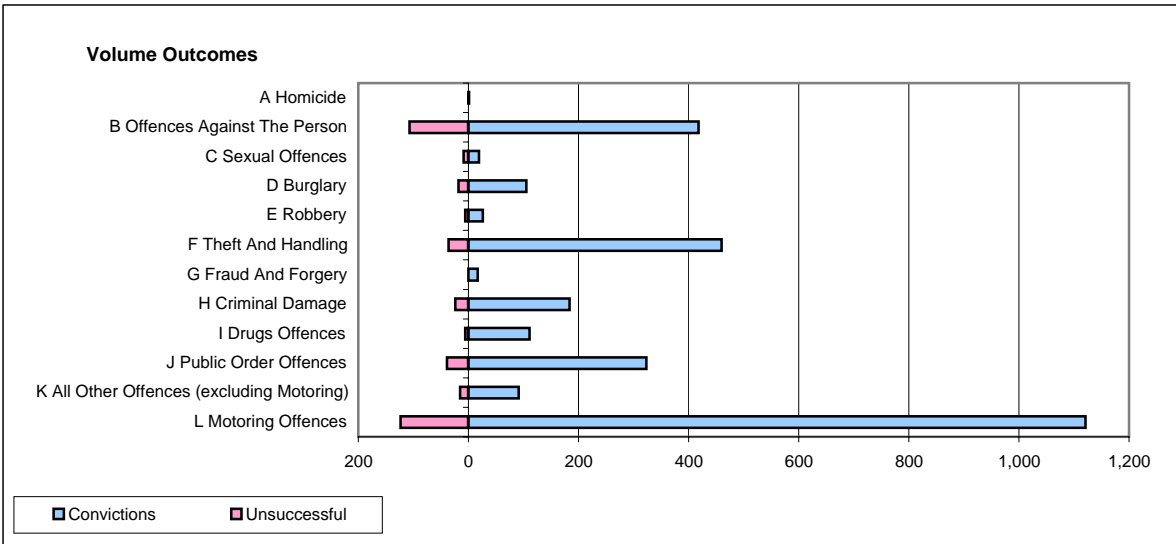
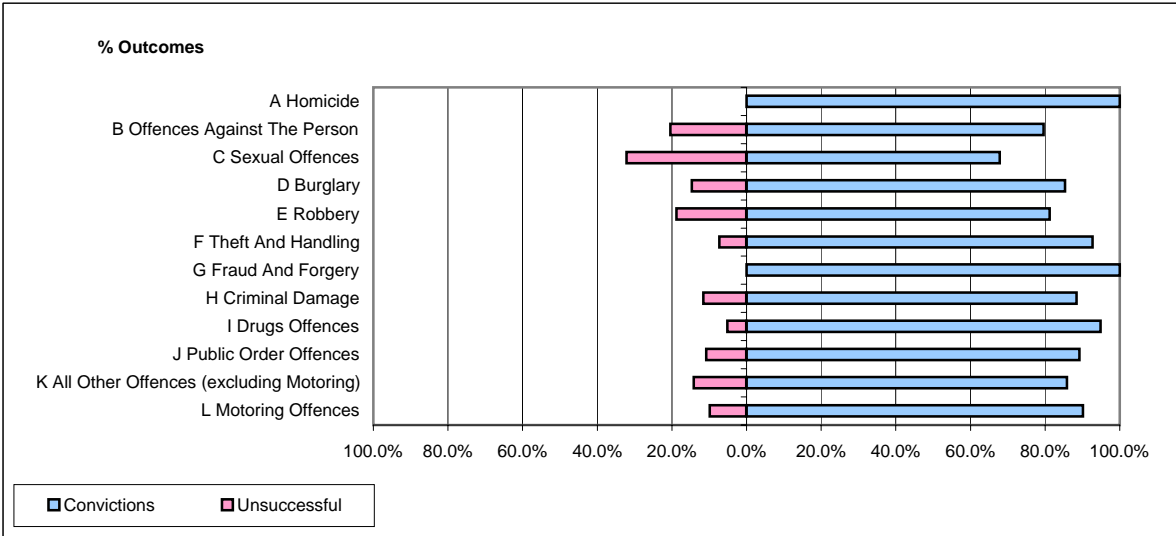


CPS OUTCOMES BY PRINCIPAL OFFENCE CATEGORY

October 2007

P21-Lancashire



	Convictions		Unsuccessful	
	Number of Defendants	%	Number of Defendants	%
A Homicide	1	100.0%	0	0.0%
B Offences Against The Person	418	79.6%	107	20.4%
C Sexual Offences	19	67.9%	9	32.1%
D Burglary	105	85.4%	18	14.6%
E Robbery	26	81.3%	6	18.8%
F Theft And Handling	460	92.7%	36	7.3%
G Fraud And Forgery	17	100.0%	0	0.0%
H Criminal Damage	184	88.5%	24	11.5%
I Drugs Offences	111	94.9%	6	5.1%
J Public Order Offences	323	89.2%	39	10.8%
K All Other Offences (excluding Motoring)	91	85.8%	15	14.2%
L Motoring Offences	1,121	90.1%	123	9.9%
Admin Finalisations	0	0.0%	40	100.0%
TOTAL	2,876	87.2%	423	12.8%