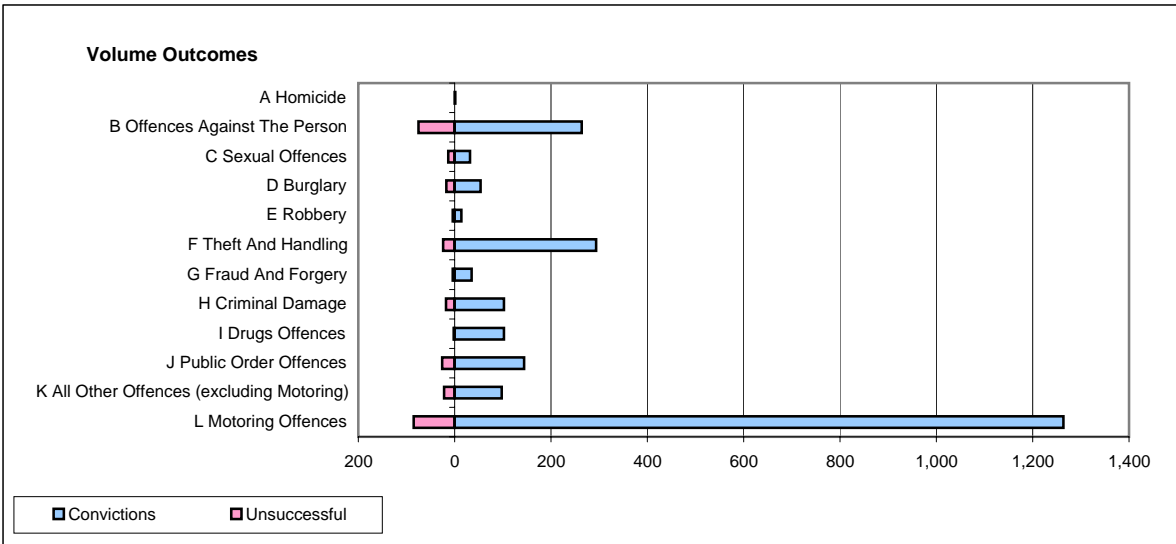
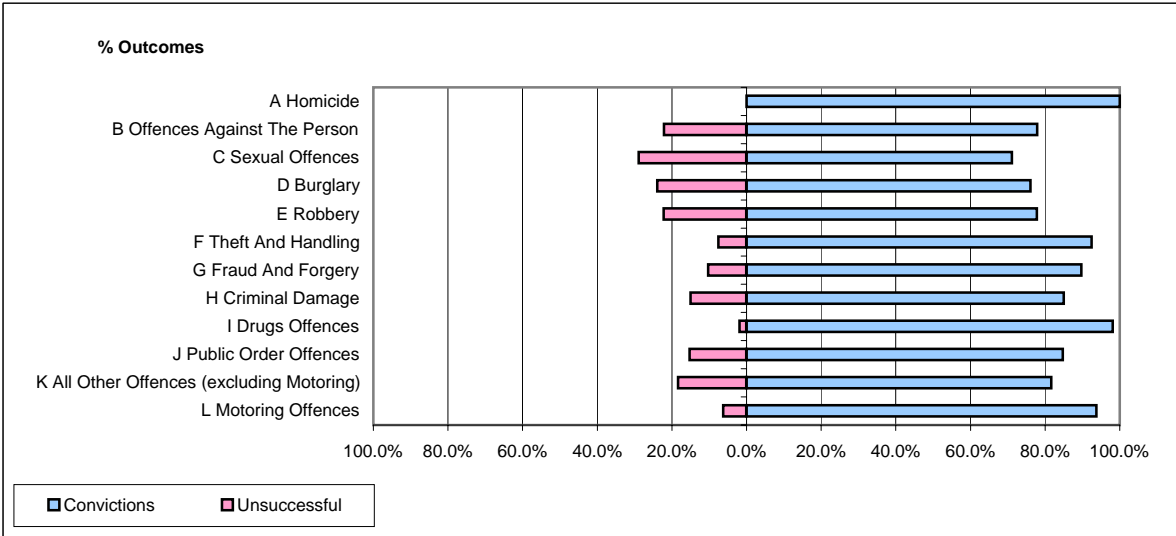


CPS OUTCOMES BY PRINCIPAL OFFENCE CATEGORY

October 2007

P20-Kent



	Convictions		Unsuccessful	
	Number of Defendants	%	Number of Defendants	%
A Homicide	1	100.0%	0	0.0%
B Offences Against The Person	264	77.9%	75	22.1%
C Sexual Offences	32	71.1%	13	28.9%
D Burglary	54	76.1%	17	23.9%
E Robbery	14	77.8%	4	22.2%
F Theft And Handling	294	92.5%	24	7.5%
G Fraud And Forgery	35	89.7%	4	10.3%
H Criminal Damage	102	85.0%	18	15.0%
I Drugs Offences	102	98.1%	2	1.9%
J Public Order Offences	144	84.7%	26	15.3%
K All Other Offences (excluding Motoring)	98	81.7%	22	18.3%
L Motoring Offences	1,264	93.7%	85	6.3%
Admin Finalisations	0	0.0%	53	100.0%
TOTAL	2,404	87.5%	343	12.5%