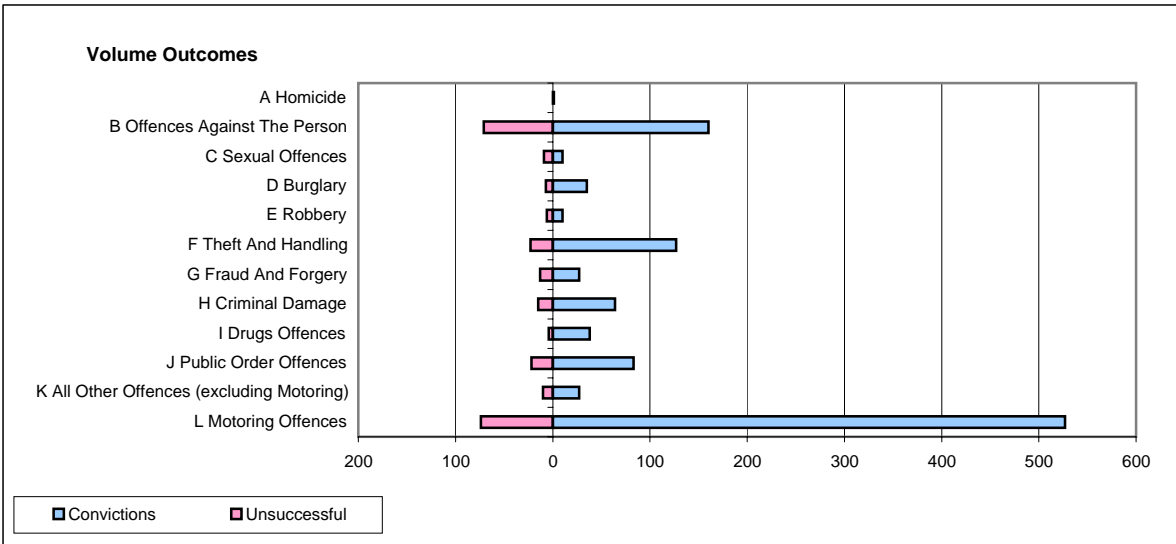
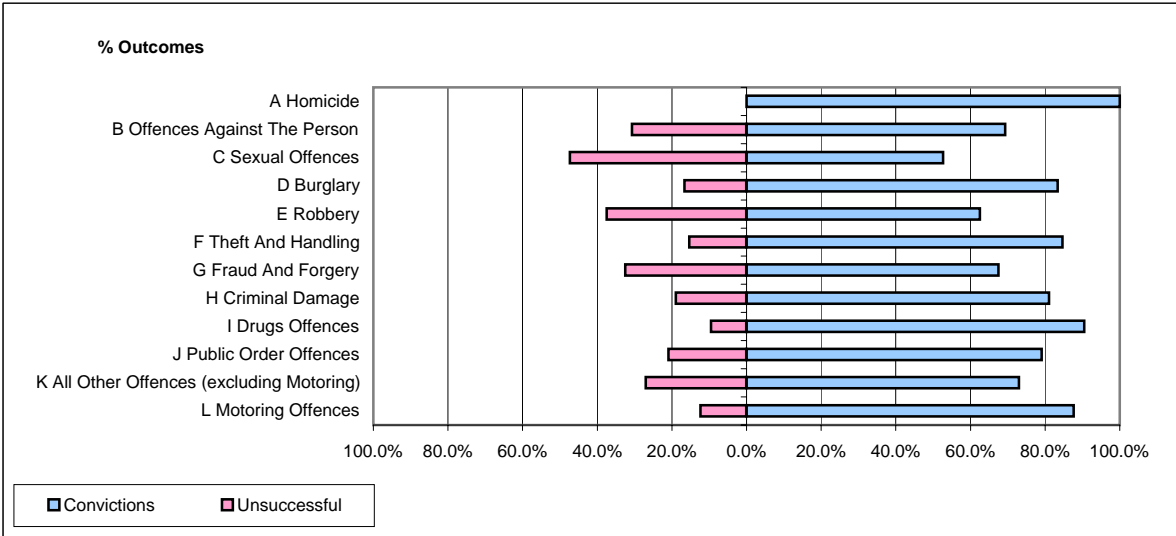


**CPS OUTCOMES BY PRINCIPAL OFFENCE CATEGORY**

**October 2007**

**P18-Hertfordshire**



	Convictions		Unsuccessful	
	Number of Defendants	%	Number of Defendants	%
<b>A Homicide</b>	<b>1</b>	<b>100.0%</b>	<b>0</b>	<b>0.0%</b>
<b>B Offences Against The Person</b>	<b>160</b>	<b>69.3%</b>	<b>71</b>	<b>30.7%</b>
<b>C Sexual Offences</b>	<b>10</b>	<b>52.6%</b>	<b>9</b>	<b>47.4%</b>
<b>D Burglary</b>	<b>35</b>	<b>83.3%</b>	<b>7</b>	<b>16.7%</b>
<b>E Robbery</b>	<b>10</b>	<b>62.5%</b>	<b>6</b>	<b>37.5%</b>
<b>F Theft And Handling</b>	<b>127</b>	<b>84.7%</b>	<b>23</b>	<b>15.3%</b>
<b>G Fraud And Forgery</b>	<b>27</b>	<b>67.5%</b>	<b>13</b>	<b>32.5%</b>
<b>H Criminal Damage</b>	<b>64</b>	<b>81.0%</b>	<b>15</b>	<b>19.0%</b>
<b>I Drugs Offences</b>	<b>38</b>	<b>90.5%</b>	<b>4</b>	<b>9.5%</b>
<b>J Public Order Offences</b>	<b>83</b>	<b>79.0%</b>	<b>22</b>	<b>21.0%</b>
<b>K All Other Offences (excluding Motoring)</b>	<b>27</b>	<b>73.0%</b>	<b>10</b>	<b>27.0%</b>
<b>L Motoring Offences</b>	<b>527</b>	<b>87.7%</b>	<b>74</b>	<b>12.3%</b>
<b>Admin Finalisations</b>	<b>0</b>	<b>0.0%</b>	<b>25</b>	<b>100.0%</b>
<b>TOTAL</b>	<b>1,109</b>	<b>79.9%</b>	<b>279</b>	<b>20.1%</b>