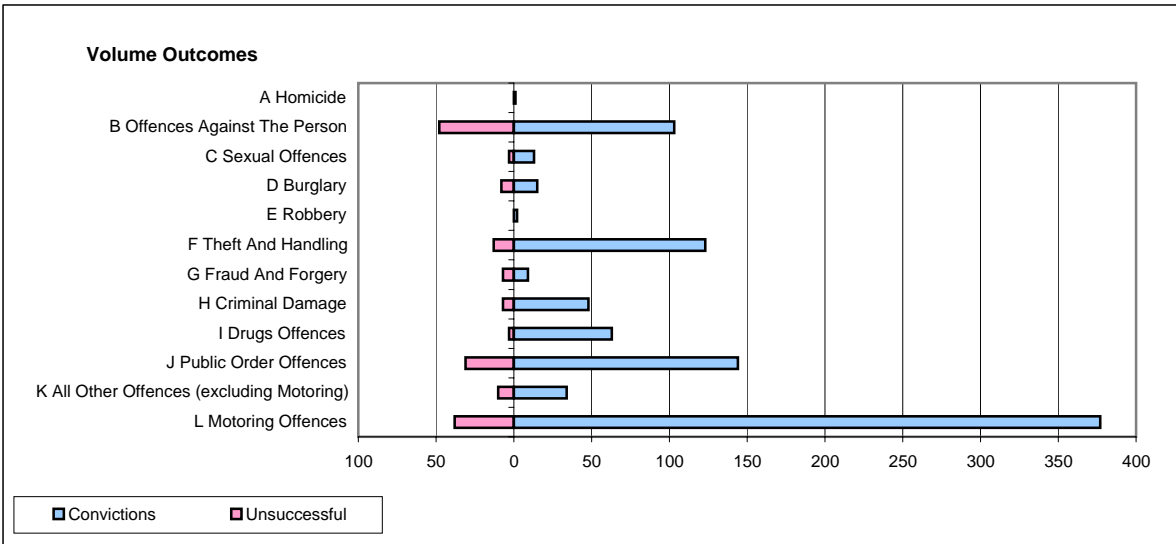
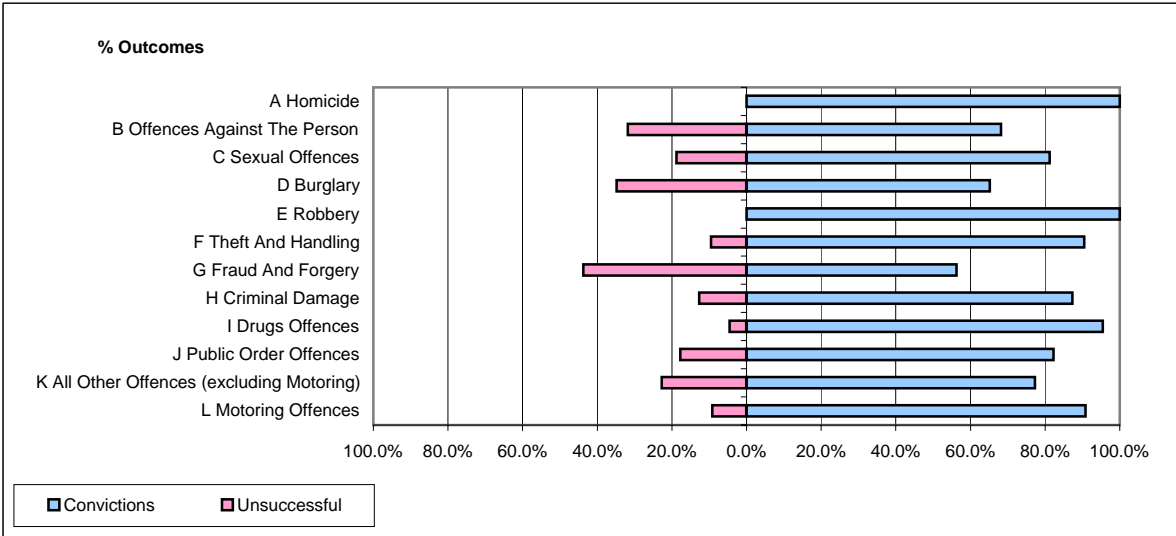


CPS OUTCOMES BY PRINCIPAL OFFENCE CATEGORY

October 2007

P16-Gwent



	Convictions		Unsuccessful	
	Number of Defendants	%	Number of Defendants	%
A Homicide	1	100.0%	0	0.0%
B Offences Against The Person	103	68.2%	48	31.8%
C Sexual Offences	13	81.3%	3	18.8%
D Burglary	15	65.2%	8	34.8%
E Robbery	2	100.0%	0	0.0%
F Theft And Handling	123	90.4%	13	9.6%
G Fraud And Forgery	9	56.3%	7	43.8%
H Criminal Damage	48	87.3%	7	12.7%
I Drugs Offences	63	95.5%	3	4.5%
J Public Order Offences	144	82.3%	31	17.7%
K All Other Offences (excluding Motoring)	34	77.3%	10	22.7%
L Motoring Offences	377	90.8%	38	9.2%
Admin Finalisations	0	0.0%	19	100.0%
TOTAL	932	83.3%	187	16.7%