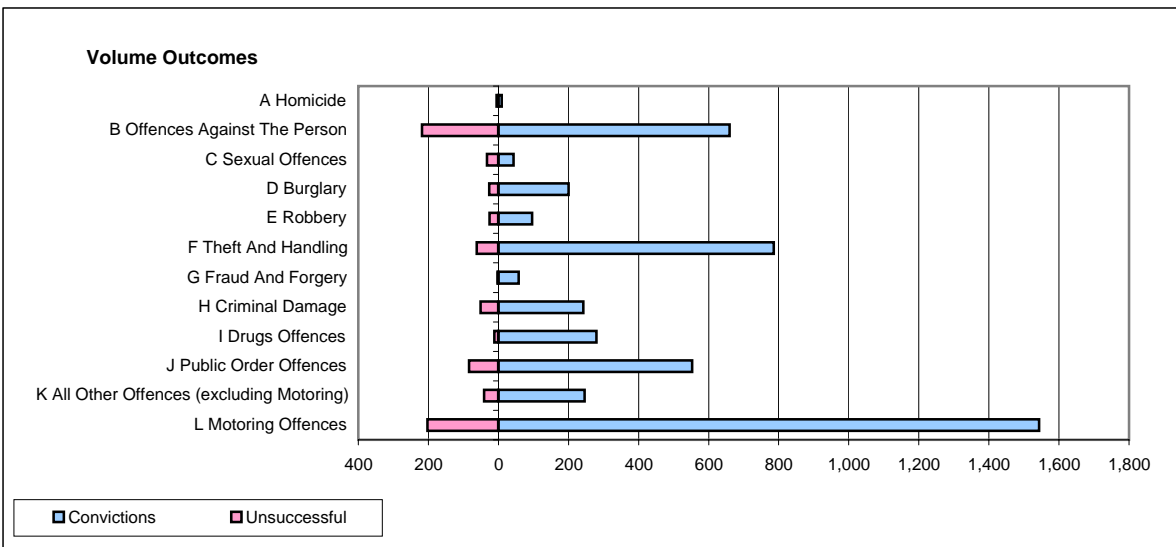
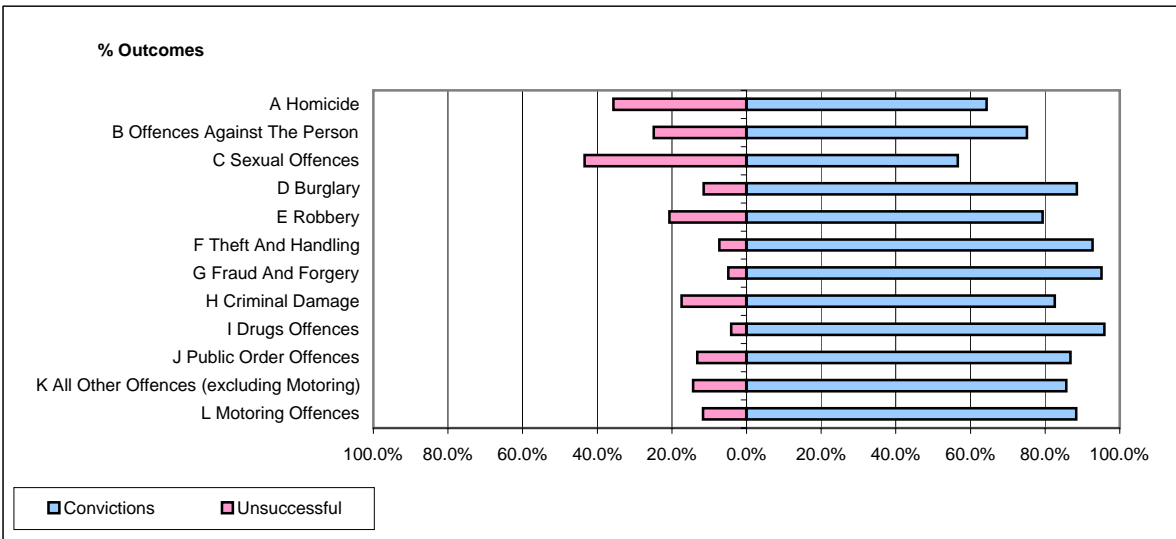


CPS OUTCOMES BY PRINCIPAL OFFENCE CATEGORY

October 2007

P15-GreaterManchester



| | Convictions | | Unsuccessful | |
|--|----------------------|--------------|----------------------|---------------|
| | Number of Defendants | % | Number of Defendants | % |
| A Homicide | 9 | 64.3% | 5 | 35.7% |
| B Offences Against The Person | 660 | 75.2% | 218 | 24.8% |
| C Sexual Offences | 43 | 56.6% | 33 | 43.4% |
| D Burglary | 200 | 88.5% | 26 | 11.5% |
| E Robbery | 96 | 79.3% | 25 | 20.7% |
| F Theft And Handling | 786 | 92.7% | 62 | 7.3% |
| G Fraud And Forgery | 58 | 95.1% | 3 | 4.9% |
| H Criminal Damage | 242 | 82.6% | 51 | 17.4% |
| I Drugs Offences | 280 | 95.9% | 12 | 4.1% |
| J Public Order Offences | 553 | 86.8% | 84 | 13.2% |
| K All Other Offences (excluding Motoring) | 246 | 85.7% | 41 | 14.3% |
| L Motoring Offences | 1,543 | 88.4% | 203 | 11.6% |
| Admin Finalisations | 0 | 0.0% | 86 | 100.0% |
| TOTAL | 4,716 | 84.7% | 849 | 15.3% |