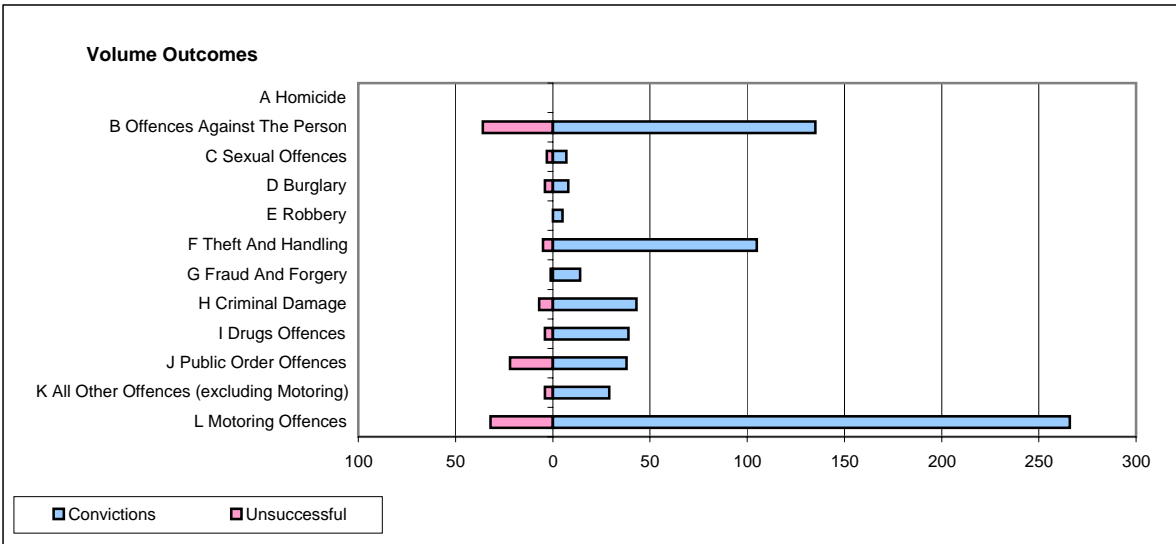
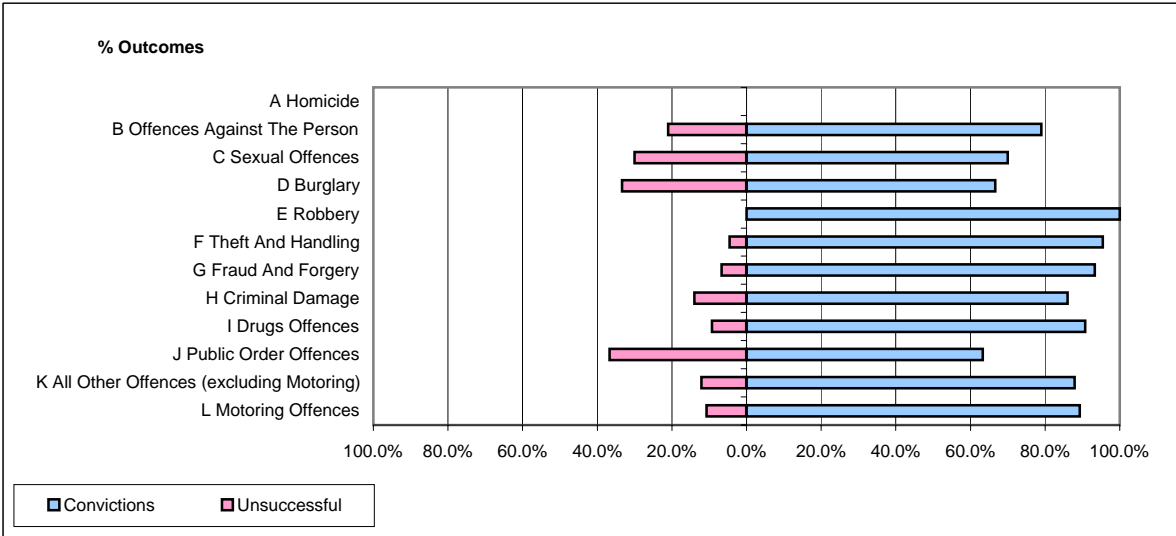


**CPS OUTCOMES BY PRINCIPAL OFFENCE CATEGORY**

October 2007

**P14-Gloucestershire**



	Convictions		Unsuccessful	
	Number of Defendants	%	Number of Defendants	%
<b>A Homicide</b>	<b>0</b>	<b>0</b>	<b>0</b>	<b>0</b>
<b>B Offences Against The Person</b>	<b>135</b>	<b>78.9%</b>	<b>36</b>	<b>21.1%</b>
<b>C Sexual Offences</b>	<b>7</b>	<b>70.0%</b>	<b>3</b>	<b>30.0%</b>
<b>D Burglary</b>	<b>8</b>	<b>66.7%</b>	<b>4</b>	<b>33.3%</b>
<b>E Robbery</b>	<b>5</b>	<b>100.0%</b>	<b>0</b>	<b>0.0%</b>
<b>F Theft And Handling</b>	<b>105</b>	<b>95.5%</b>	<b>5</b>	<b>4.5%</b>
<b>G Fraud And Forgery</b>	<b>14</b>	<b>93.3%</b>	<b>1</b>	<b>6.7%</b>
<b>H Criminal Damage</b>	<b>43</b>	<b>86.0%</b>	<b>7</b>	<b>14.0%</b>
<b>I Drugs Offences</b>	<b>39</b>	<b>90.7%</b>	<b>4</b>	<b>9.3%</b>
<b>J Public Order Offences</b>	<b>38</b>	<b>63.3%</b>	<b>22</b>	<b>36.7%</b>
<b>K All Other Offences (excluding Motoring)</b>	<b>29</b>	<b>87.9%</b>	<b>4</b>	<b>12.1%</b>
<b>L Motoring Offences</b>	<b>266</b>	<b>89.3%</b>	<b>32</b>	<b>10.7%</b>
<b>Admin Finalisations</b>	<b>0</b>	<b>0.0%</b>	<b>9</b>	<b>100.0%</b>
<b>TOTAL</b>	<b>689</b>	<b>84.4%</b>	<b>127</b>	<b>15.6%</b>