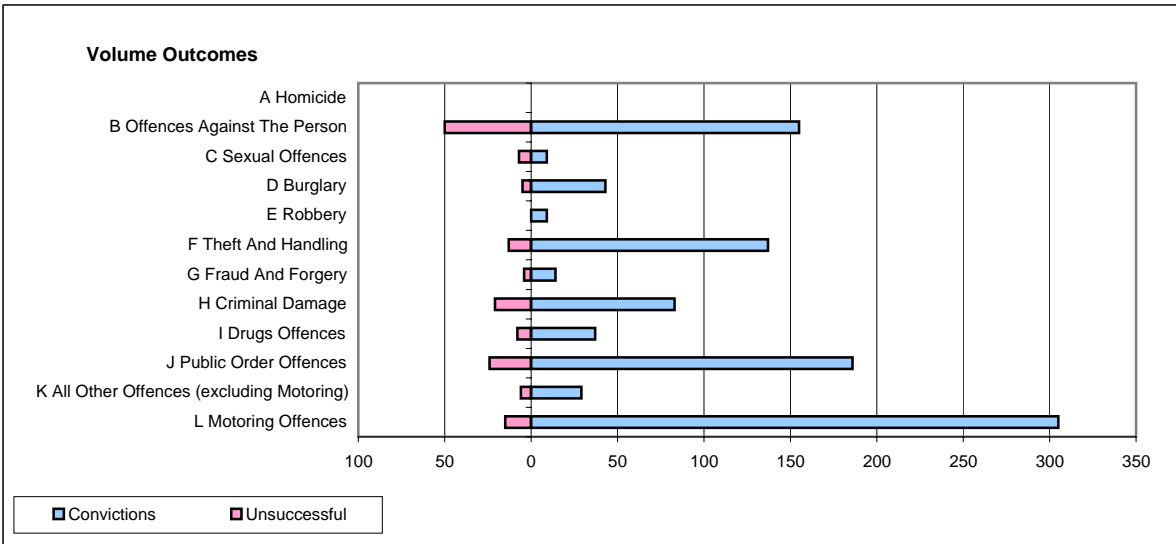
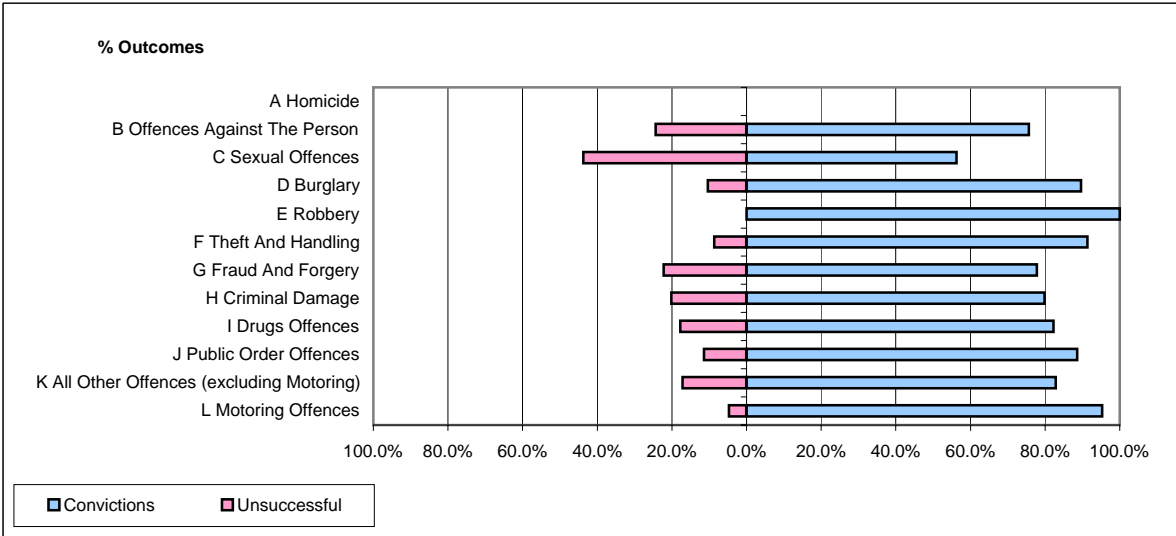


CPS OUTCOMES BY PRINCIPAL OFFENCE CATEGORY

October 2007

P11-Durham



	Convictions		Unsuccessful	
	Number of Defendants	%	Number of Defendants	%
A Homicide	0	0	0	0
B Offences Against The Person	155	75.6%	50	24.4%
C Sexual Offences	9	56.3%	7	43.8%
D Burglary	43	89.6%	5	10.4%
E Robbery	9	100.0%	0	0.0%
F Theft And Handling	137	91.3%	13	8.7%
G Fraud And Forgery	14	77.8%	4	22.2%
H Criminal Damage	83	79.8%	21	20.2%
I Drugs Offences	37	82.2%	8	17.8%
J Public Order Offences	186	88.6%	24	11.4%
K All Other Offences (excluding Motoring)	29	82.9%	6	17.1%
L Motoring Offences	305	95.3%	15	4.7%
Admin Finalisations	0	0.0%	11	100.0%
TOTAL	1,007	86.0%	164	14.0%