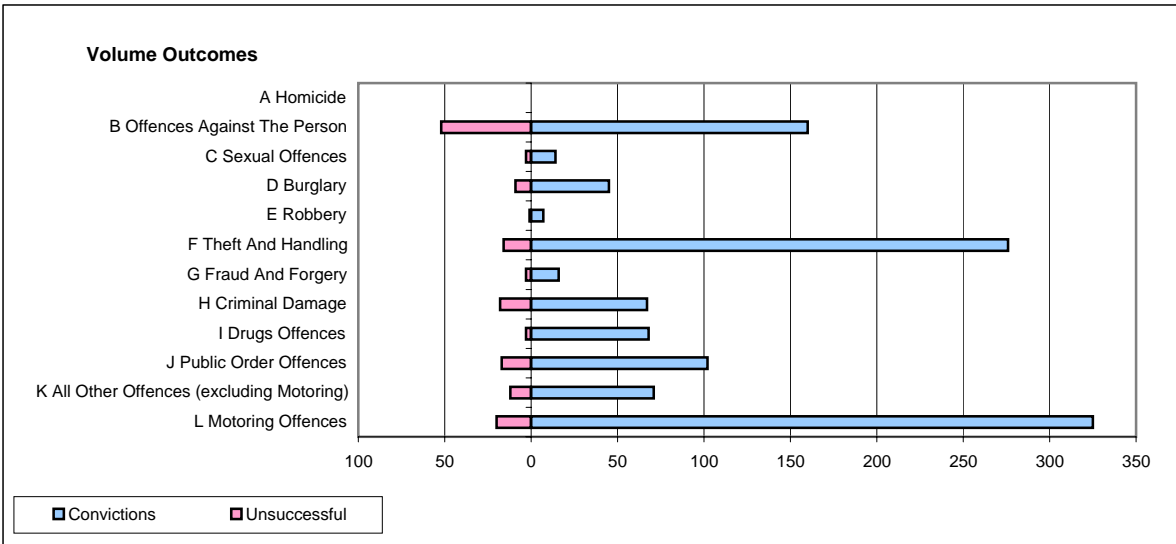
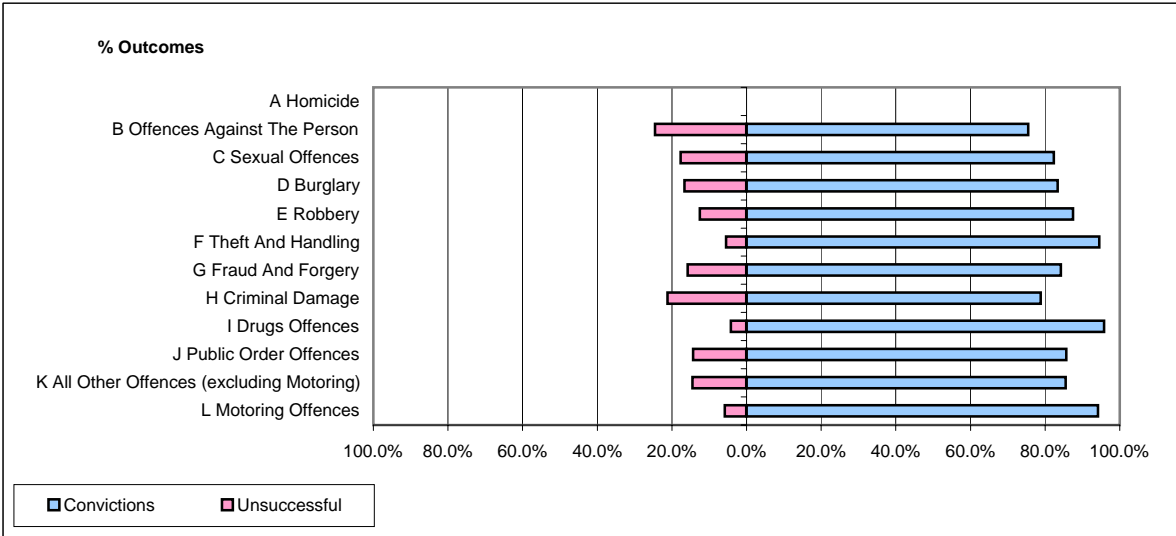


**CPS OUTCOMES BY PRINCIPAL OFFENCE CATEGORY**

**October 2007**

**P06-Cleveland**



	Convictions		Unsuccessful	
	Number of Defendants	%	Number of Defendants	%
<b>A Homicide</b>	<b>0</b>	<b>0</b>	<b>0</b>	<b>0</b>
<b>B Offences Against The Person</b>	<b>160</b>	<b>75.5%</b>	<b>52</b>	<b>24.5%</b>
<b>C Sexual Offences</b>	<b>14</b>	<b>82.4%</b>	<b>3</b>	<b>17.6%</b>
<b>D Burglary</b>	<b>45</b>	<b>83.3%</b>	<b>9</b>	<b>16.7%</b>
<b>E Robbery</b>	<b>7</b>	<b>87.5%</b>	<b>1</b>	<b>12.5%</b>
<b>F Theft And Handling</b>	<b>276</b>	<b>94.5%</b>	<b>16</b>	<b>5.5%</b>
<b>G Fraud And Forgery</b>	<b>16</b>	<b>84.2%</b>	<b>3</b>	<b>15.8%</b>
<b>H Criminal Damage</b>	<b>67</b>	<b>78.8%</b>	<b>18</b>	<b>21.2%</b>
<b>I Drugs Offences</b>	<b>68</b>	<b>95.8%</b>	<b>3</b>	<b>4.2%</b>
<b>J Public Order Offences</b>	<b>102</b>	<b>85.7%</b>	<b>17</b>	<b>14.3%</b>
<b>K All Other Offences (excluding Motoring)</b>	<b>71</b>	<b>85.5%</b>	<b>12</b>	<b>14.5%</b>
<b>L Motoring Offences</b>	<b>325</b>	<b>94.2%</b>	<b>20</b>	<b>5.8%</b>
<b>Admin Finalisations</b>	<b>0</b>	<b>0.0%</b>	<b>22</b>	<b>100.0%</b>
<b>TOTAL</b>	<b>1,151</b>	<b>86.7%</b>	<b>176</b>	<b>13.3%</b>