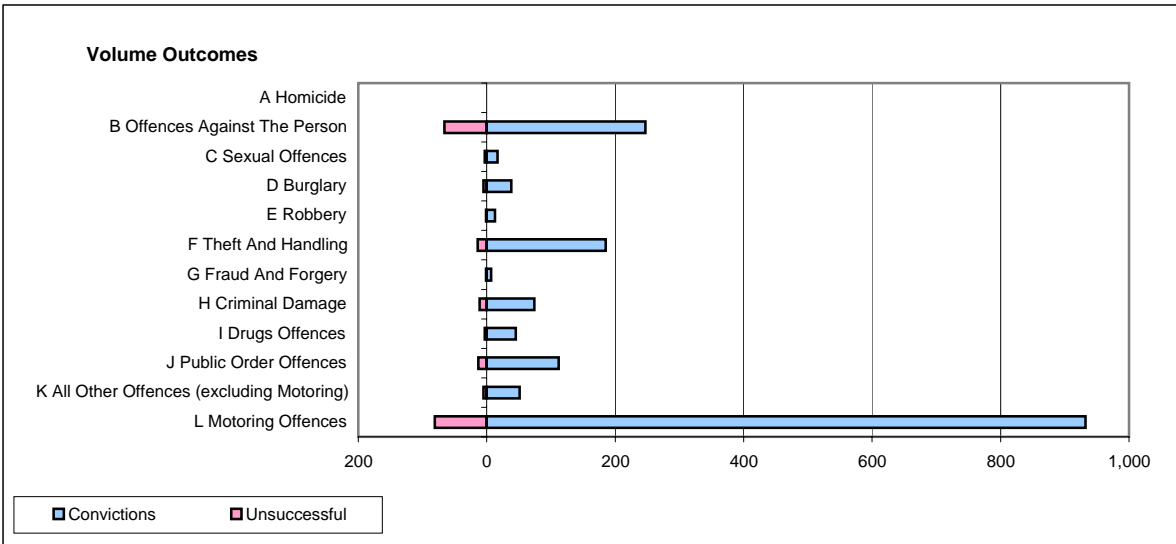
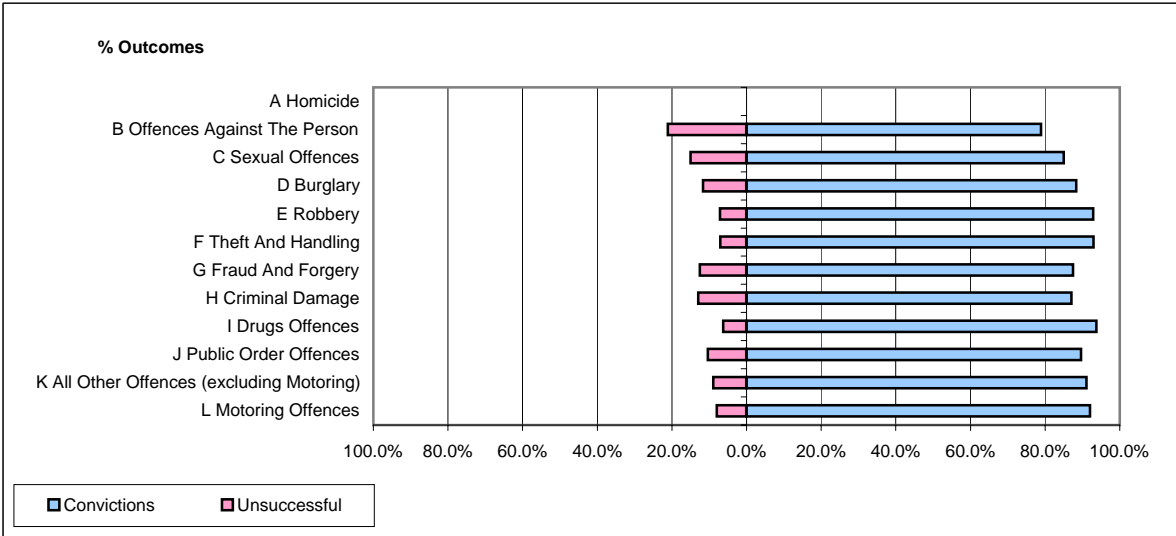


CPS OUTCOMES BY PRINCIPAL OFFENCE CATEGORY

October 2007

P04-Cheshire



	Convictions		Unsuccessful	
	Number of Defendants	%	Number of Defendants	%
A Homicide	0	0	0	0
B Offences Against The Person	247	78.9%	66	21.1%
C Sexual Offences	17	85.0%	3	15.0%
D Burglary	38	88.4%	5	11.6%
E Robbery	13	92.9%	1	7.1%
F Theft And Handling	185	93.0%	14	7.0%
G Fraud And Forgery	7	87.5%	1	12.5%
H Criminal Damage	74	87.1%	11	12.9%
I Drugs Offences	45	93.8%	3	6.3%
J Public Order Offences	112	89.6%	13	10.4%
K All Other Offences (excluding Motoring)	51	91.1%	5	8.9%
L Motoring Offences	932	92.0%	81	8.0%
Admin Finalisations	0	0.0%	19	100.0%
TOTAL	1,721	88.6%	222	11.4%