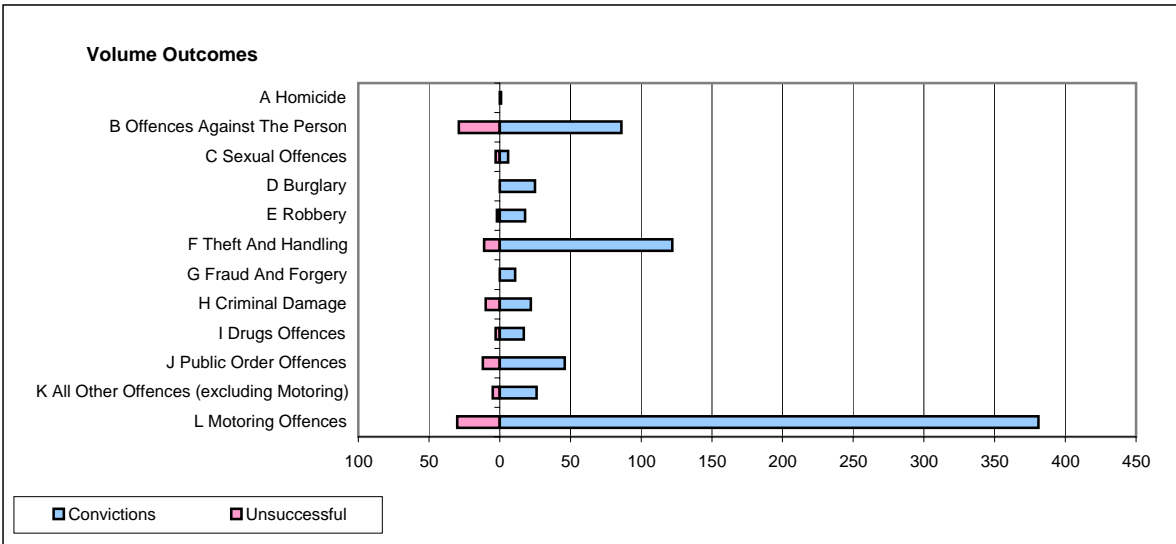
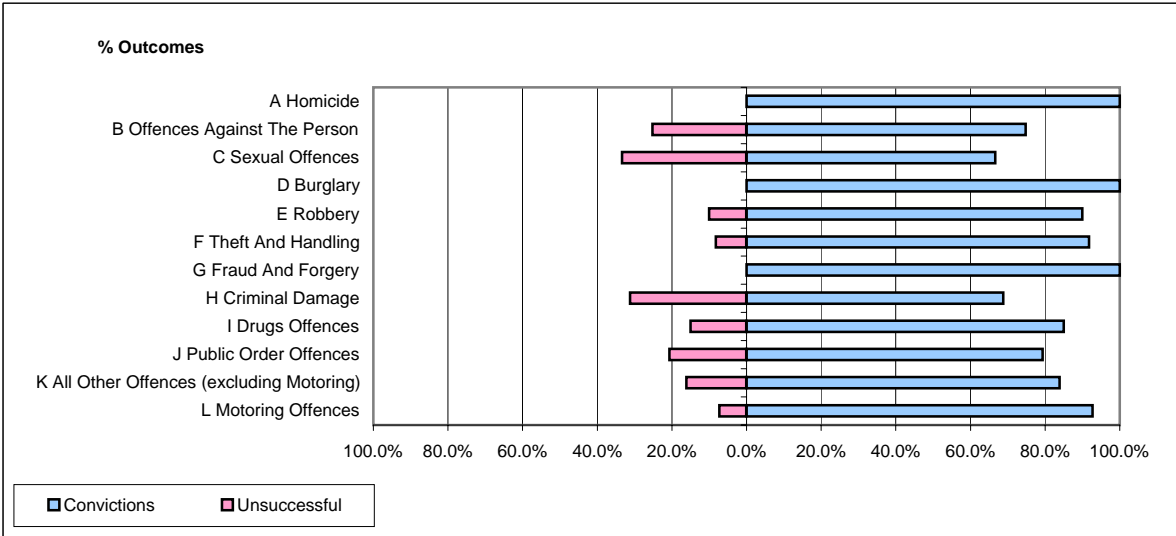


CPS OUTCOMES BY PRINCIPAL OFFENCE CATEGORY

October 2007

P02-Bedfordshire



	Convictions		Unsuccessful	
	Number of Defendants	%	Number of Defendants	%
A Homicide	1	100.0%	0	0.0%
B Offences Against The Person	86	74.8%	29	25.2%
C Sexual Offences	6	66.7%	3	33.3%
D Burglary	25	100.0%	0	0.0%
E Robbery	18	90.0%	2	10.0%
F Theft And Handling	122	91.7%	11	8.3%
G Fraud And Forgery	11	100.0%	0	0.0%
H Criminal Damage	22	68.8%	10	31.3%
I Drugs Offences	17	85.0%	3	15.0%
J Public Order Offences	46	79.3%	12	20.7%
K All Other Offences (excluding Motoring)	26	83.9%	5	16.1%
L Motoring Offences	381	92.7%	30	7.3%
Admin Finalisations	0	0.0%	14	100.0%
TOTAL	761	86.5%	119	13.5%