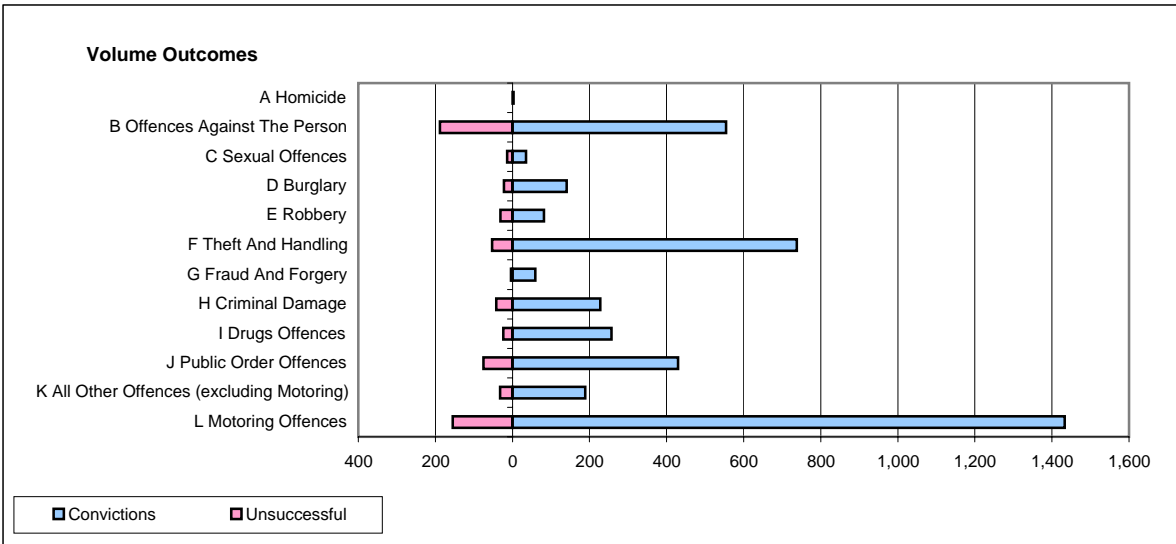
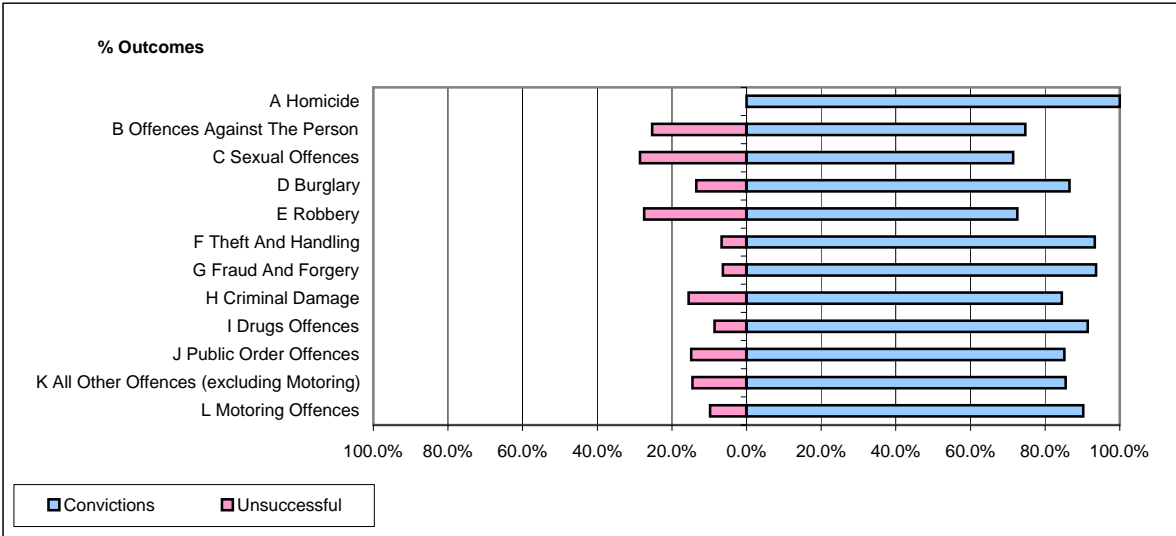


CPS OUTCOMES BY PRINCIPAL OFFENCE CATEGORY

September 2007

P41-WestMidlands



	Convictions		Unsuccessful	
	Number of Defendants	%	Number of Defendants	%
A Homicide	3	100.0%	0	0.0%
B Offences Against The Person	554	74.7%	188	25.3%
C Sexual Offences	35	71.4%	14	28.6%
D Burglary	141	86.5%	22	13.5%
E Robbery	82	72.6%	31	27.4%
F Theft And Handling	738	93.3%	53	6.7%
G Fraud And Forgery	59	93.7%	4	6.3%
H Criminal Damage	228	84.4%	42	15.6%
I Drugs Offences	257	91.5%	24	8.5%
J Public Order Offences	430	85.1%	75	14.9%
K All Other Offences (excluding Motoring)	189	85.5%	32	14.5%
L Motoring Offences	1,433	90.2%	155	9.8%
Admin Finalisations	0	0.0%	87	100.0%
TOTAL	4,149	85.1%	727	14.9%