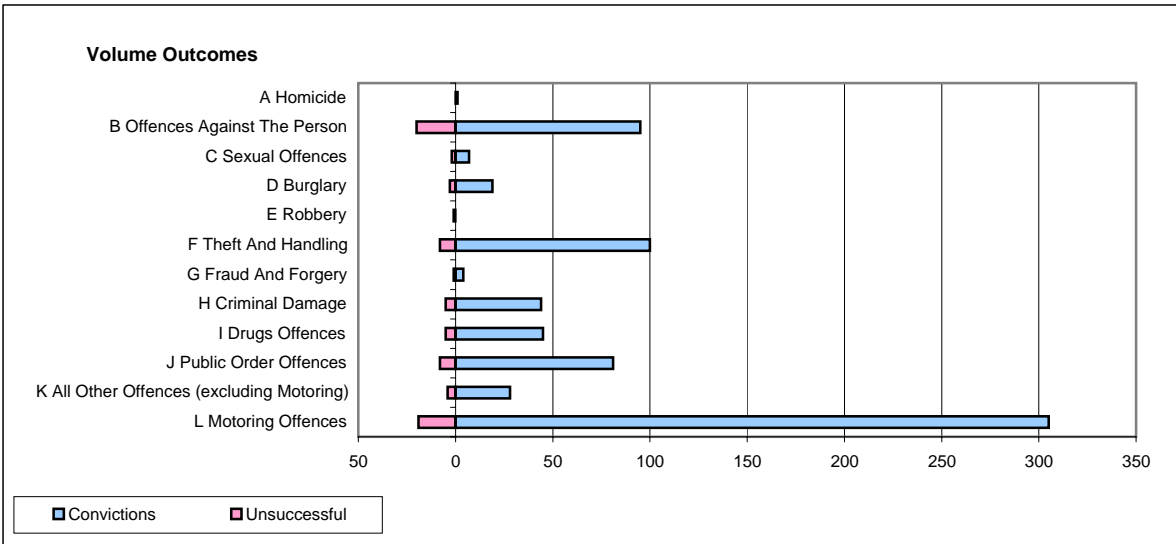
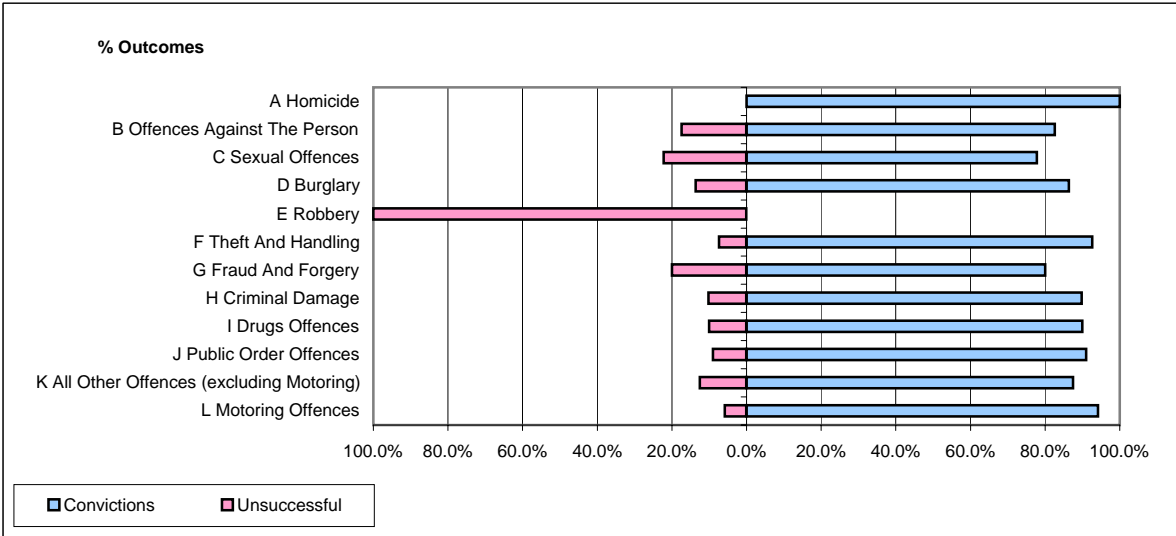


**CPS OUTCOMES BY PRINCIPAL OFFENCE CATEGORY**

September 2007

**P35-Suffolk**



	Convictions		Unsuccessful	
	Number of Defendants	%	Number of Defendants	%
<b>A Homicide</b>	<b>1</b>	<b>100.0%</b>	<b>0</b>	<b>0.0%</b>
<b>B Offences Against The Person</b>	<b>95</b>	<b>82.6%</b>	<b>20</b>	<b>17.4%</b>
<b>C Sexual Offences</b>	<b>7</b>	<b>77.8%</b>	<b>2</b>	<b>22.2%</b>
<b>D Burglary</b>	<b>19</b>	<b>86.4%</b>	<b>3</b>	<b>13.6%</b>
<b>E Robbery</b>	<b>0</b>	<b>0.0%</b>	<b>1</b>	<b>100.0%</b>
<b>F Theft And Handling</b>	<b>100</b>	<b>92.6%</b>	<b>8</b>	<b>7.4%</b>
<b>G Fraud And Forgery</b>	<b>4</b>	<b>80.0%</b>	<b>1</b>	<b>20.0%</b>
<b>H Criminal Damage</b>	<b>44</b>	<b>89.8%</b>	<b>5</b>	<b>10.2%</b>
<b>I Drugs Offences</b>	<b>45</b>	<b>90.0%</b>	<b>5</b>	<b>10.0%</b>
<b>J Public Order Offences</b>	<b>81</b>	<b>91.0%</b>	<b>8</b>	<b>9.0%</b>
<b>K All Other Offences (excluding Motoring)</b>	<b>28</b>	<b>87.5%</b>	<b>4</b>	<b>12.5%</b>
<b>L Motoring Offences</b>	<b>305</b>	<b>94.1%</b>	<b>19</b>	<b>5.9%</b>
<b>Admin Finalisations</b>	<b>0</b>	<b>0.0%</b>	<b>11</b>	<b>100.0%</b>
<b>TOTAL</b>	<b>729</b>	<b>89.3%</b>	<b>87</b>	<b>10.7%</b>