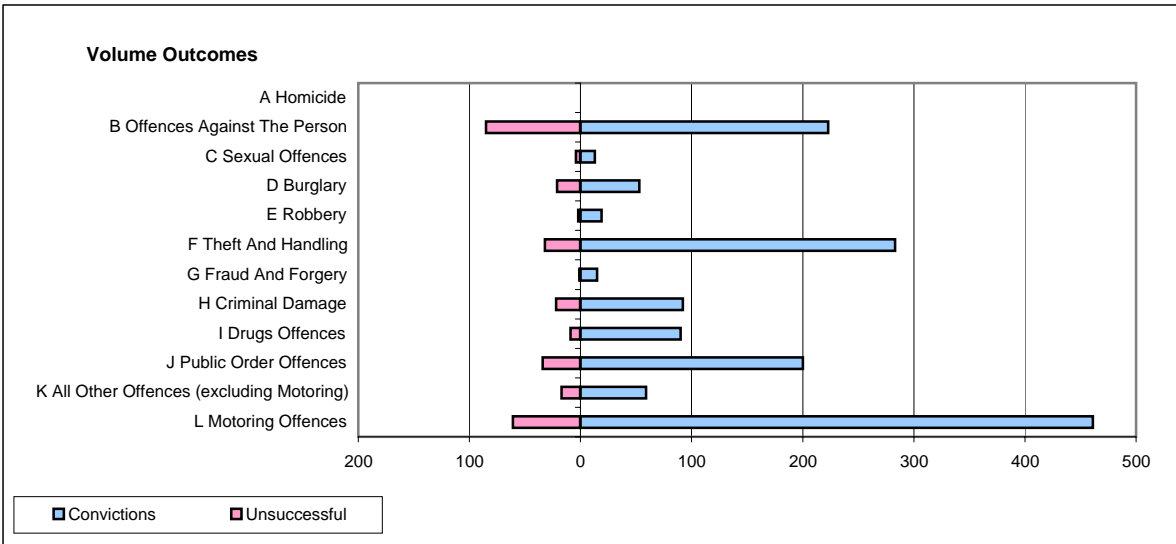
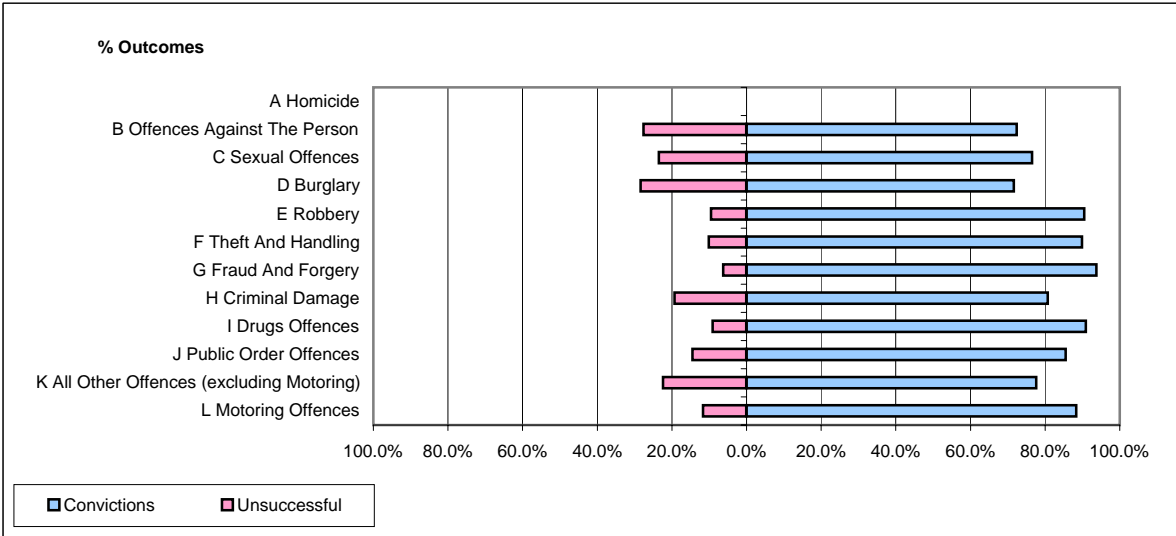


**CPS OUTCOMES BY PRINCIPAL OFFENCE CATEGORY**

**September 2007**

**P31-Nottinghamshire**



	Convictions		Unsuccessful	
	Number of Defendants	%	Number of Defendants	%
<b>A Homicide</b>	<b>0</b>	<b>0</b>	<b>0</b>	<b>0</b>
<b>B Offences Against The Person</b>	<b>223</b>	<b>72.4%</b>	<b>85</b>	<b>27.6%</b>
<b>C Sexual Offences</b>	<b>13</b>	<b>76.5%</b>	<b>4</b>	<b>23.5%</b>
<b>D Burglary</b>	<b>53</b>	<b>71.6%</b>	<b>21</b>	<b>28.4%</b>
<b>E Robbery</b>	<b>19</b>	<b>90.5%</b>	<b>2</b>	<b>9.5%</b>
<b>F Theft And Handling</b>	<b>283</b>	<b>89.8%</b>	<b>32</b>	<b>10.2%</b>
<b>G Fraud And Forgery</b>	<b>15</b>	<b>93.8%</b>	<b>1</b>	<b>6.3%</b>
<b>H Criminal Damage</b>	<b>92</b>	<b>80.7%</b>	<b>22</b>	<b>19.3%</b>
<b>I Drugs Offences</b>	<b>90</b>	<b>90.9%</b>	<b>9</b>	<b>9.1%</b>
<b>J Public Order Offences</b>	<b>200</b>	<b>85.5%</b>	<b>34</b>	<b>14.5%</b>
<b>K All Other Offences (excluding Motoring)</b>	<b>59</b>	<b>77.6%</b>	<b>17</b>	<b>22.4%</b>
<b>L Motoring Offences</b>	<b>461</b>	<b>88.3%</b>	<b>61</b>	<b>11.7%</b>
<b>Admin Finalisations</b>	<b>0</b>	<b>0.0%</b>	<b>27</b>	<b>100.0%</b>
<b>TOTAL</b>	<b>1,508</b>	<b>82.7%</b>	<b>315</b>	<b>17.3%</b>