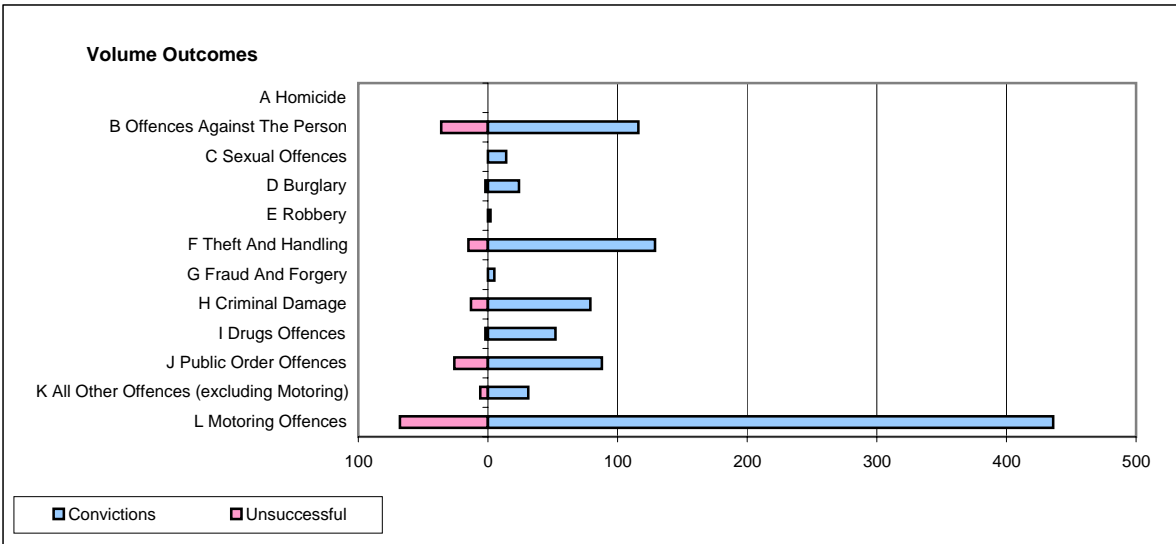
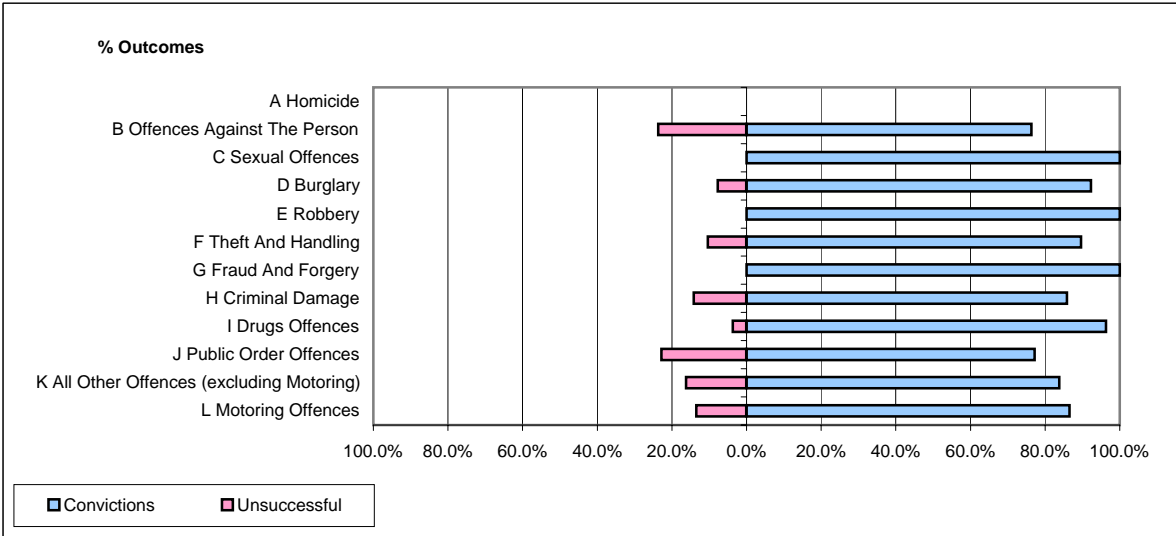


CPS OUTCOMES BY PRINCIPAL OFFENCE CATEGORY

September 2007

P26-Norfolk



	Convictions		Unsuccessful	
	Number of Defendants	%	Number of Defendants	%
A Homicide	0	0	0	0
B Offences Against The Person	116	76.3%	36	23.7%
C Sexual Offences	14	100.0%	0	0.0%
D Burglary	24	92.3%	2	7.7%
E Robbery	2	100.0%	0	0.0%
F Theft And Handling	129	89.6%	15	10.4%
G Fraud And Forgery	5	100.0%	0	0.0%
H Criminal Damage	79	85.9%	13	14.1%
I Drugs Offences	52	96.3%	2	3.7%
J Public Order Offences	88	77.2%	26	22.8%
K All Other Offences (excluding Motoring)	31	83.8%	6	16.2%
L Motoring Offences	436	86.5%	68	13.5%
Admin Finalisations	0	0.0%	31	100.0%
TOTAL	976	83.1%	199	16.9%