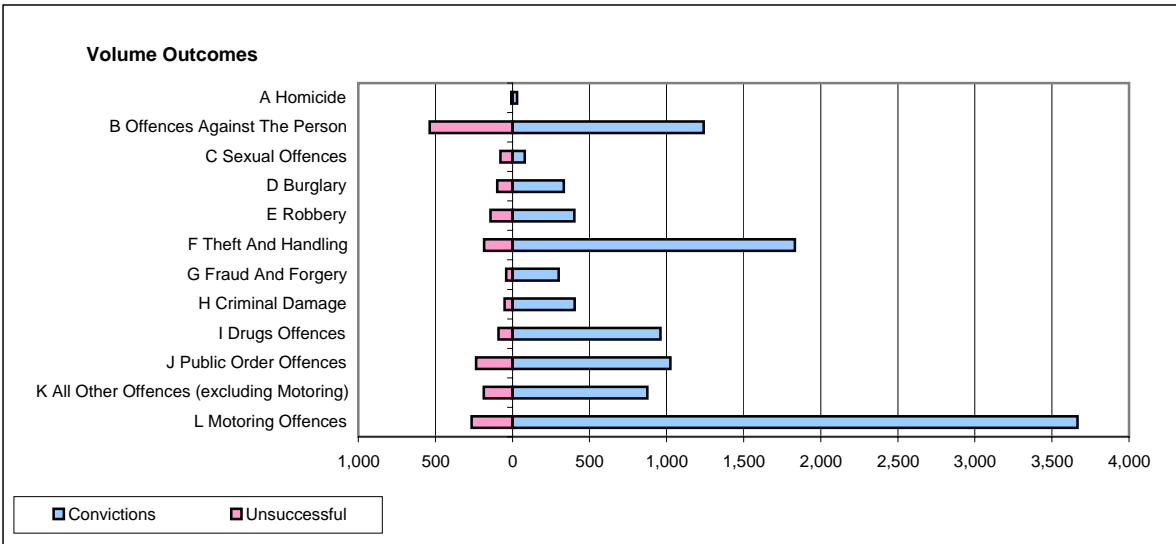
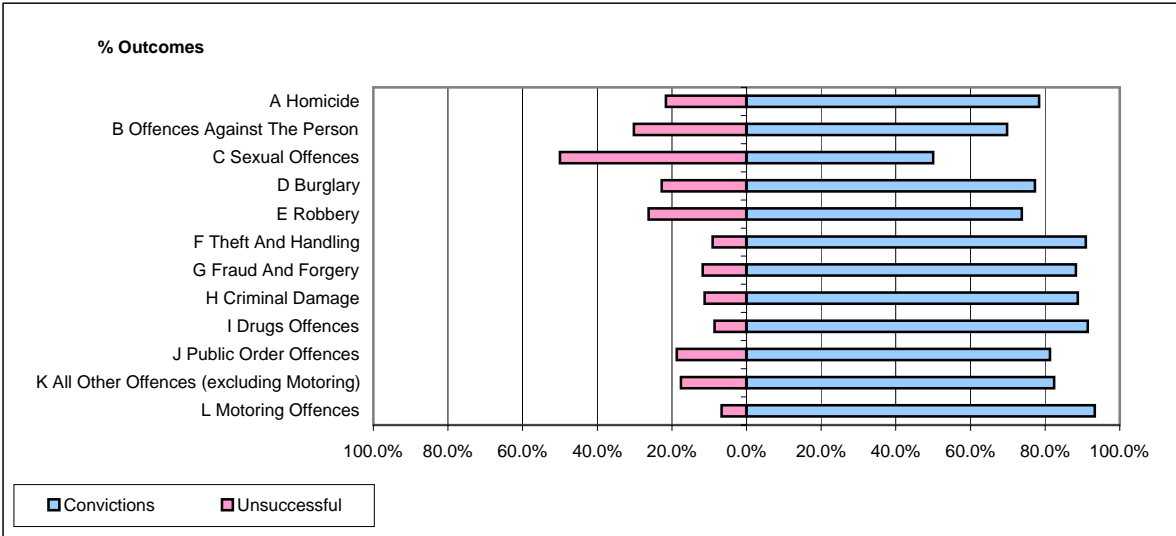


CPS OUTCOMES BY PRINCIPAL OFFENCE CATEGORY

September 2007

P25-Metropolitan&City



	Convictions		Unsuccessful	
	Number of Defendants	%	Number of Defendants	%
A Homicide	29	78.4%	8	21.6%
B Offences Against The Person	1,240	69.8%	537	30.2%
C Sexual Offences	79	50.0%	79	50.0%
D Burglary	333	77.3%	98	22.7%
E Robbery	402	73.8%	143	26.2%
F Theft And Handling	1,833	90.9%	184	9.1%
G Fraud And Forgery	300	88.2%	40	11.8%
H Criminal Damage	404	88.8%	51	11.2%
I Drugs Offences	960	91.4%	90	8.6%
J Public Order Offences	1,024	81.3%	235	18.7%
K All Other Offences (excluding Motoring)	874	82.5%	186	17.5%
L Motoring Offences	3,666	93.3%	264	6.7%
Admin Finalisations	0	0.0%	574	100.0%
TOTAL	11,144	81.7%	2,489	18.3%