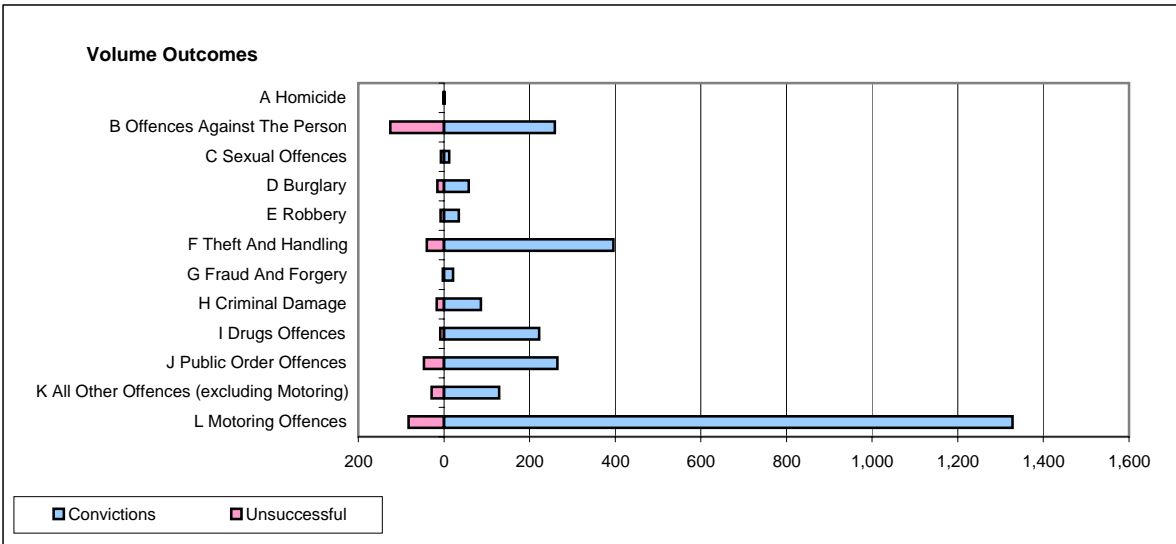
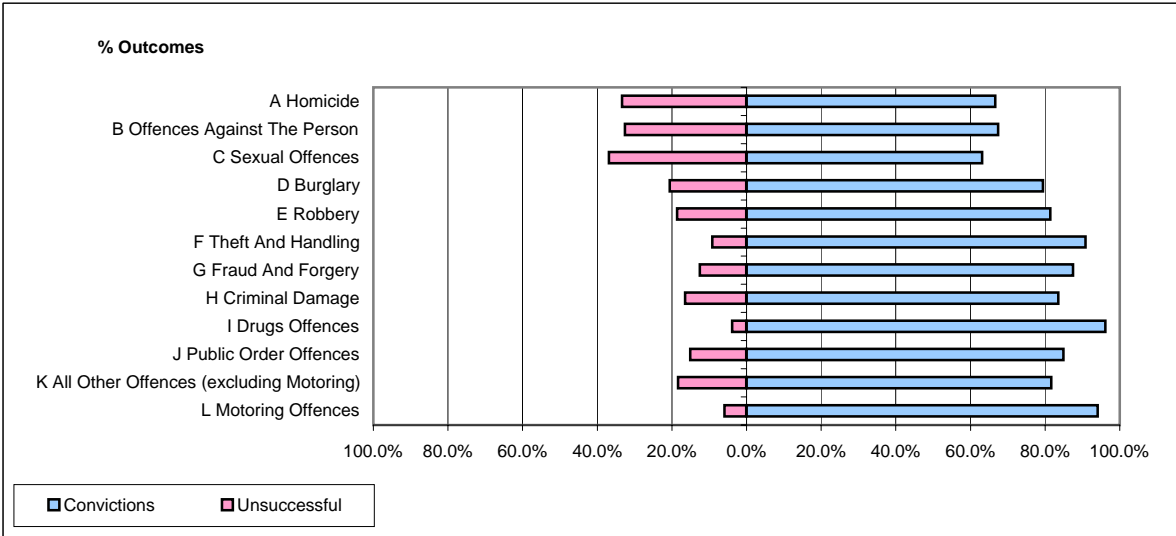


CPS OUTCOMES BY PRINCIPAL OFFENCE CATEGORY

September 2007

P24-Merseyside



	Convictions		Unsuccessful	
	Number of Defendants	%	Number of Defendants	%
A Homicide	2	66.7%	1	33.3%
B Offences Against The Person	259	67.4%	125	32.6%
C Sexual Offences	12	63.2%	7	36.8%
D Burglary	58	79.5%	15	20.5%
E Robbery	35	81.4%	8	18.6%
F Theft And Handling	396	90.8%	40	9.2%
G Fraud And Forgery	21	87.5%	3	12.5%
H Criminal Damage	86	83.5%	17	16.5%
I Drugs Offences	222	96.1%	9	3.9%
J Public Order Offences	265	84.9%	47	15.1%
K All Other Offences (excluding Motoring)	129	81.6%	29	18.4%
L Motoring Offences	1,328	94.1%	83	5.9%
Admin Finalisations	0	0.0%	43	100.0%
TOTAL	2,813	86.8%	427	13.2%