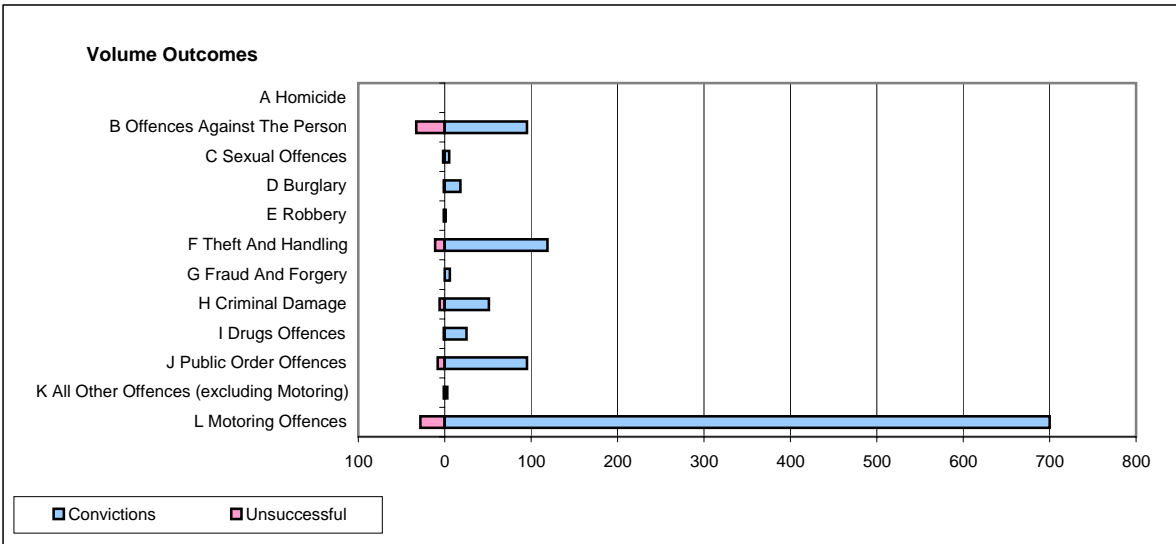
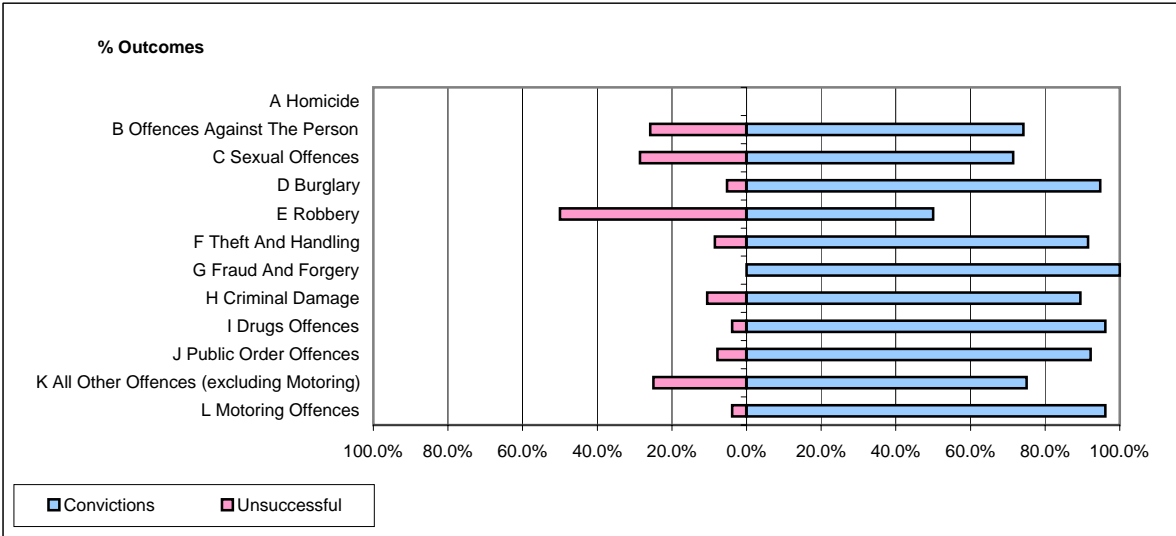


CPS OUTCOMES BY PRINCIPAL OFFENCE CATEGORY

September 2007

P23-Lincolnshire



	Convictions		Unsuccessful	
	Number of Defendants	%	Number of Defendants	%
A Homicide	0	0	0	0
B Offences Against The Person	95	74.2%	33	25.8%
C Sexual Offences	5	71.4%	2	28.6%
D Burglary	18	94.7%	1	5.3%
E Robbery	1	50.0%	1	50.0%
F Theft And Handling	119	91.5%	11	8.5%
G Fraud And Forgery	6	100.0%	0	0.0%
H Criminal Damage	51	89.5%	6	10.5%
I Drugs Offences	25	96.2%	1	3.8%
J Public Order Offences	95	92.2%	8	7.8%
K All Other Offences (excluding Motoring)	3	75.0%	1	25.0%
L Motoring Offences	700	96.2%	28	3.8%
Admin Finalisations	0	0.0%	10	100.0%
TOTAL	1,118	91.6%	102	8.4%