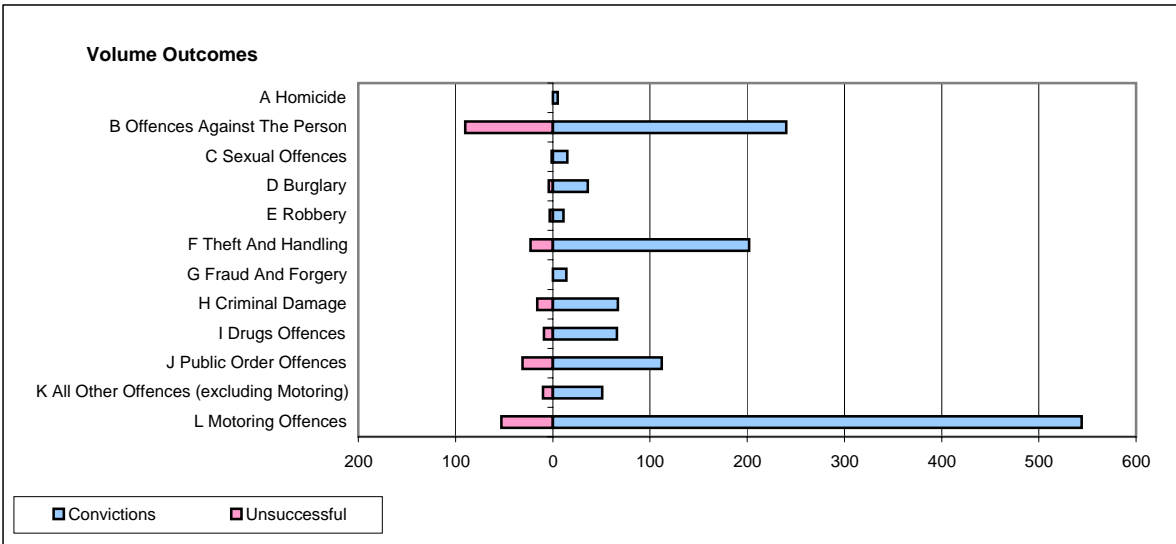
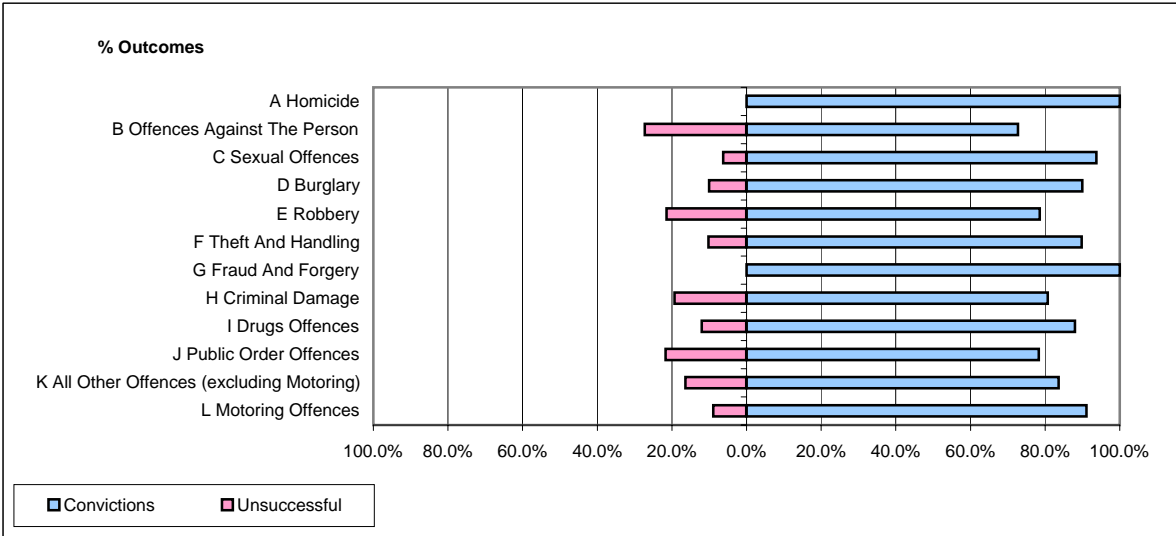


CPS OUTCOMES BY PRINCIPAL OFFENCE CATEGORY

September 2007

P22-Leicestershire



	Convictions		Unsuccessful	
	Number of Defendants	%	Number of Defendants	%
A Homicide	5	100.0%	0	0.0%
B Offences Against The Person	240	72.7%	90	27.3%
C Sexual Offences	15	93.8%	1	6.3%
D Burglary	36	90.0%	4	10.0%
E Robbery	11	78.6%	3	21.4%
F Theft And Handling	202	89.8%	23	10.2%
G Fraud And Forgery	14	100.0%	0	0.0%
H Criminal Damage	67	80.7%	16	19.3%
I Drugs Offences	66	88.0%	9	12.0%
J Public Order Offences	112	78.3%	31	21.7%
K All Other Offences (excluding Motoring)	51	83.6%	10	16.4%
L Motoring Offences	544	91.1%	53	8.9%
Admin Finalisations	0	0.0%	23	100.0%
TOTAL	1,363	83.8%	263	16.2%