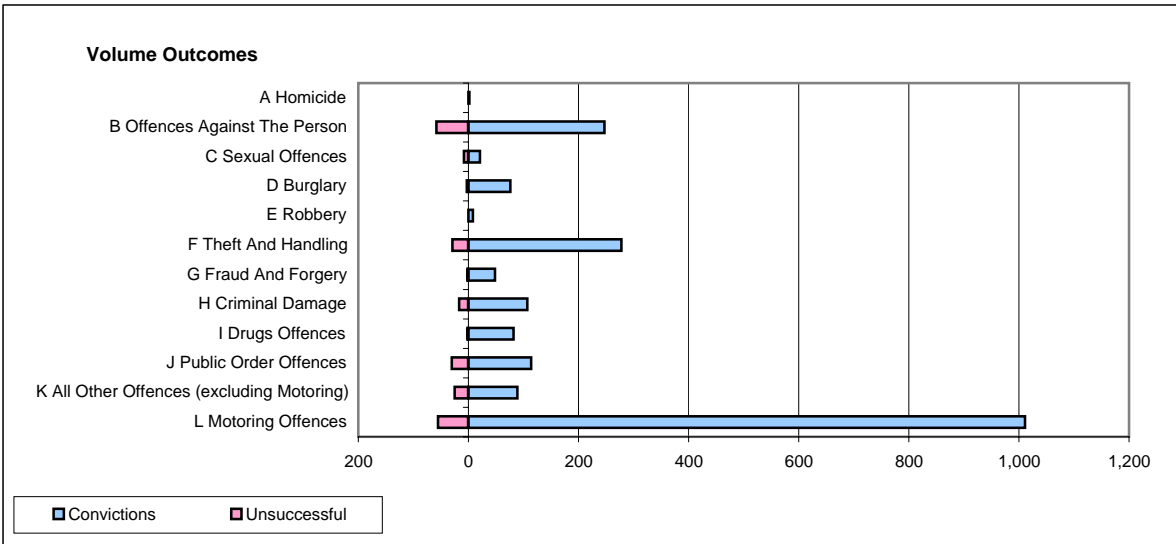
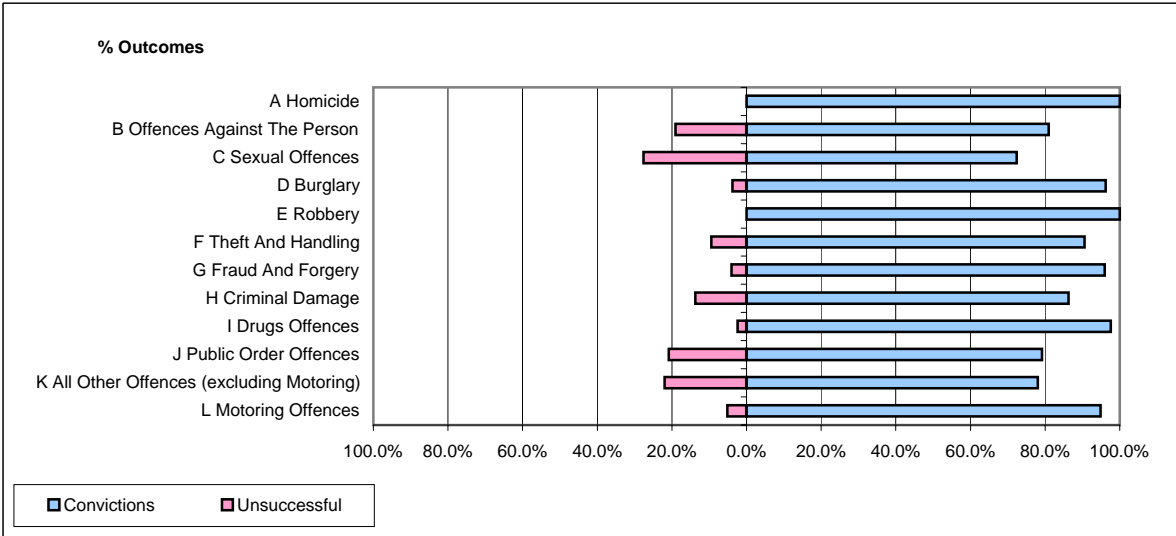


CPS OUTCOMES BY PRINCIPAL OFFENCE CATEGORY

September 2007

P20-Kent



	Convictions		Unsuccessful	
	Number of Defendants	%	Number of Defendants	%
A Homicide	2	100.0%	0	0.0%
B Offences Against The Person	247	81.0%	58	19.0%
C Sexual Offences	21	72.4%	8	27.6%
D Burglary	76	96.2%	3	3.8%
E Robbery	8	100.0%	0	0.0%
F Theft And Handling	278	90.6%	29	9.4%
G Fraud And Forgery	48	96.0%	2	4.0%
H Criminal Damage	107	86.3%	17	13.7%
I Drugs Offences	82	97.6%	2	2.4%
J Public Order Offences	114	79.2%	30	20.8%
K All Other Offences (excluding Motoring)	89	78.1%	25	21.9%
L Motoring Offences	1,011	94.8%	55	5.2%
Admin Finalisations	0	0.0%	39	100.0%
TOTAL	2,083	88.6%	268	11.4%