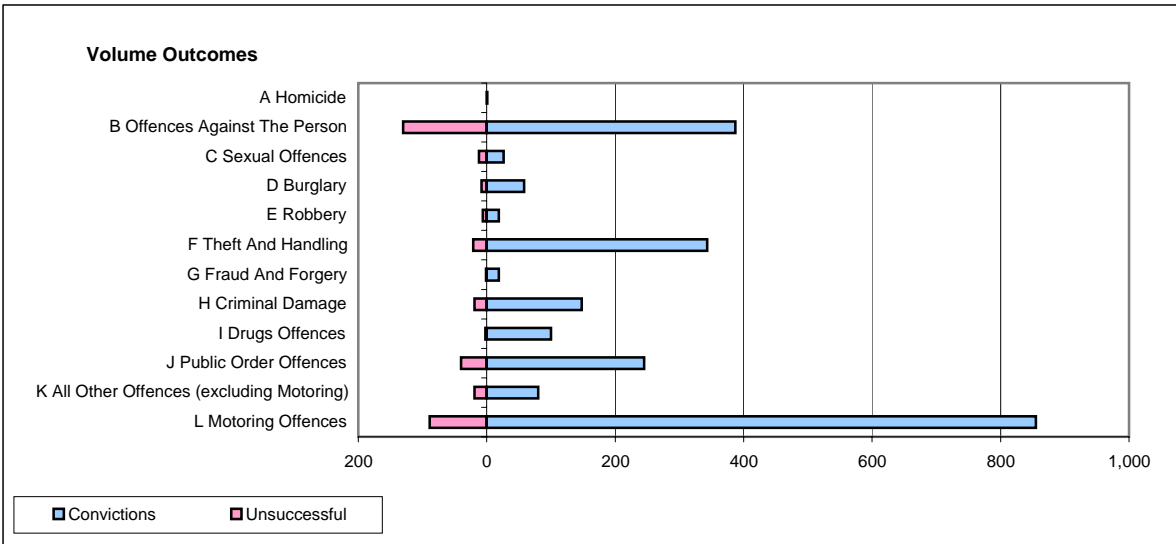
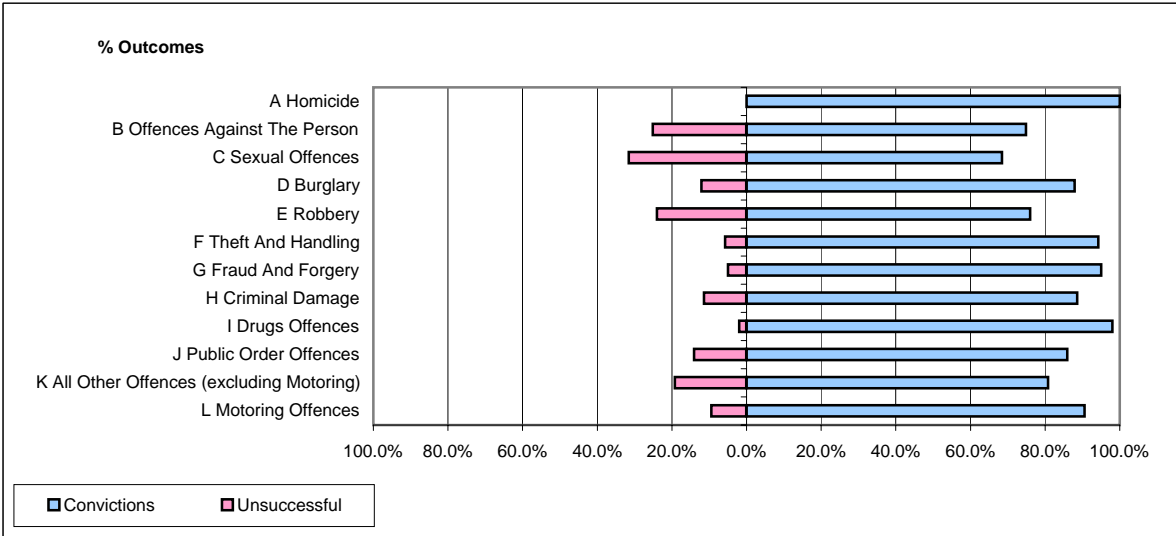


**CPS OUTCOMES BY PRINCIPAL OFFENCE CATEGORY**

September 2007

**P17-Hampshire**



	Convictions		Unsuccessful	
	Number of Defendants	%	Number of Defendants	%
<b>A Homicide</b>	<b>1</b>	<b>100.0%</b>	<b>0</b>	<b>0.0%</b>
<b>B Offences Against The Person</b>	<b>387</b>	<b>74.9%</b>	<b>130</b>	<b>25.1%</b>
<b>C Sexual Offences</b>	<b>26</b>	<b>68.4%</b>	<b>12</b>	<b>31.6%</b>
<b>D Burglary</b>	<b>58</b>	<b>87.9%</b>	<b>8</b>	<b>12.1%</b>
<b>E Robbery</b>	<b>19</b>	<b>76.0%</b>	<b>6</b>	<b>24.0%</b>
<b>F Theft And Handling</b>	<b>343</b>	<b>94.2%</b>	<b>21</b>	<b>5.8%</b>
<b>G Fraud And Forgery</b>	<b>19</b>	<b>95.0%</b>	<b>1</b>	<b>5.0%</b>
<b>H Criminal Damage</b>	<b>148</b>	<b>88.6%</b>	<b>19</b>	<b>11.4%</b>
<b>I Drugs Offences</b>	<b>100</b>	<b>98.0%</b>	<b>2</b>	<b>2.0%</b>
<b>J Public Order Offences</b>	<b>245</b>	<b>86.0%</b>	<b>40</b>	<b>14.0%</b>
<b>K All Other Offences (excluding Motoring)</b>	<b>80</b>	<b>80.8%</b>	<b>19</b>	<b>19.2%</b>
<b>L Motoring Offences</b>	<b>855</b>	<b>90.6%</b>	<b>89</b>	<b>9.4%</b>
<b>Admin Finalisations</b>	<b>0</b>	<b>0.0%</b>	<b>58</b>	<b>100.0%</b>
<b>TOTAL</b>	<b>2,281</b>	<b>84.9%</b>	<b>405</b>	<b>15.1%</b>