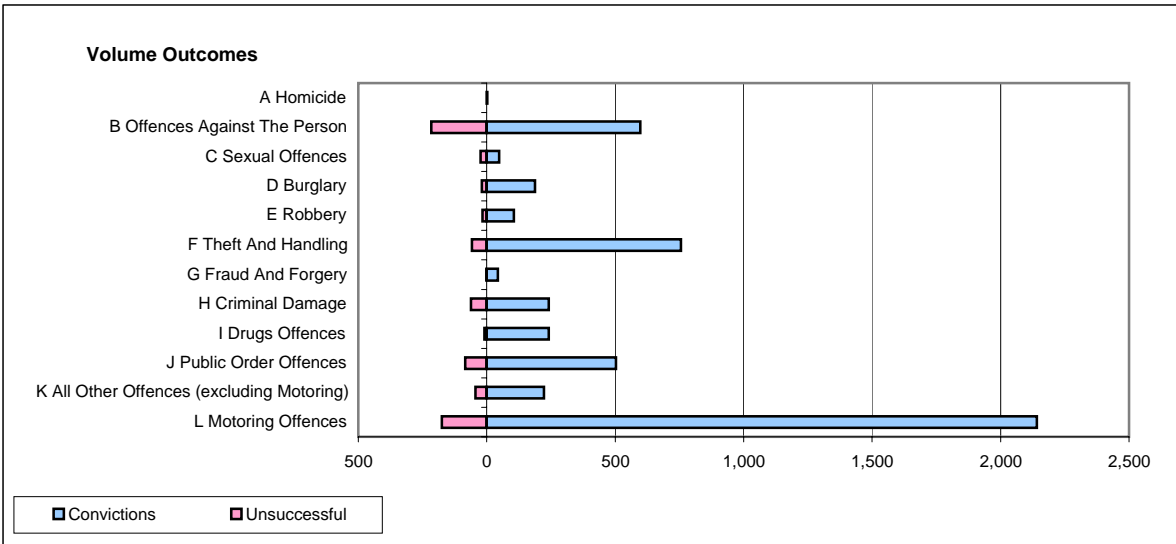
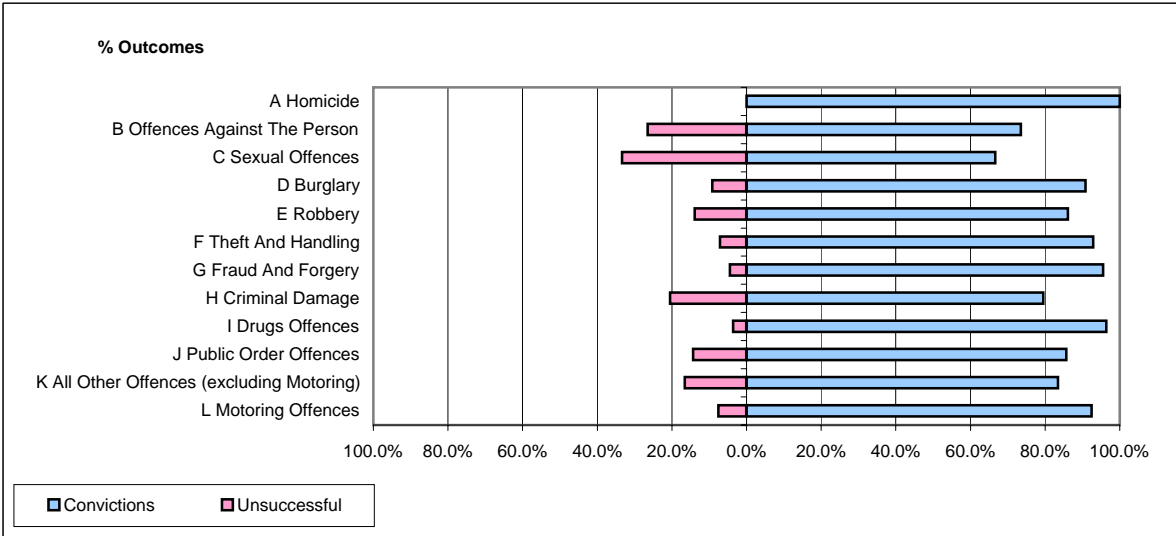


CPS OUTCOMES BY PRINCIPAL OFFENCE CATEGORY

September 2007

P15-GreaterManchester



	Convictions		Unsuccessful	
	Number of Defendants	%	Number of Defendants	%
A Homicide	2	100.0%	0	0.0%
B Offences Against The Person	598	73.5%	216	26.5%
C Sexual Offences	48	66.7%	24	33.3%
D Burglary	188	90.8%	19	9.2%
E Robbery	105	86.1%	17	13.9%
F Theft And Handling	756	92.9%	58	7.1%
G Fraud And Forgery	43	95.6%	2	4.4%
H Criminal Damage	241	79.5%	62	20.5%
I Drugs Offences	241	96.4%	9	3.6%
J Public Order Offences	503	85.7%	84	14.3%
K All Other Offences (excluding Motoring)	222	83.5%	44	16.5%
L Motoring Offences	2,141	92.4%	175	7.6%
Admin Finalisations	0	0.0%	83	100.0%
TOTAL	5,088	86.5%	793	13.5%