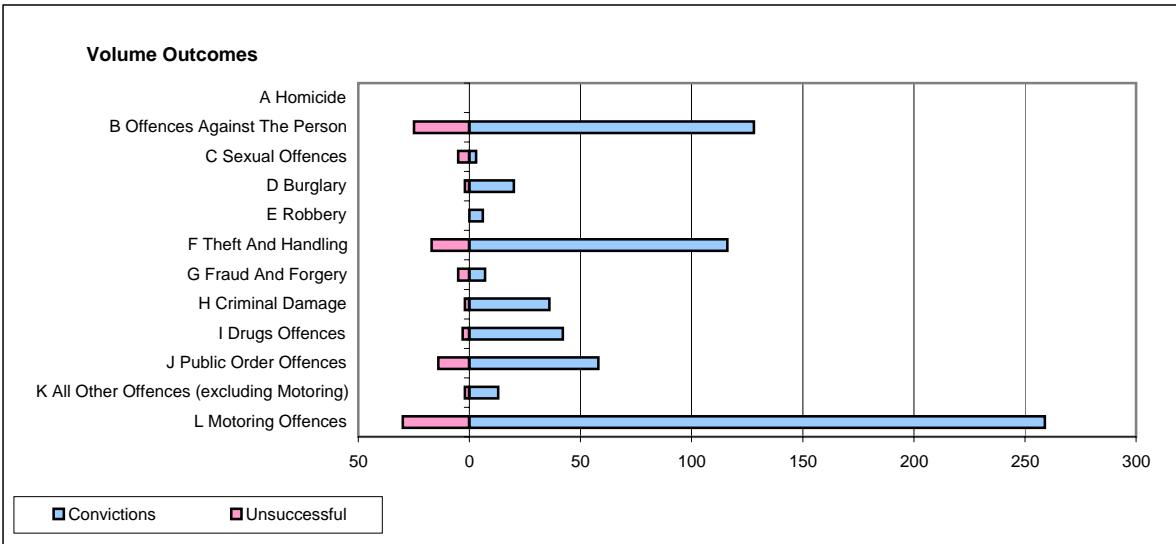
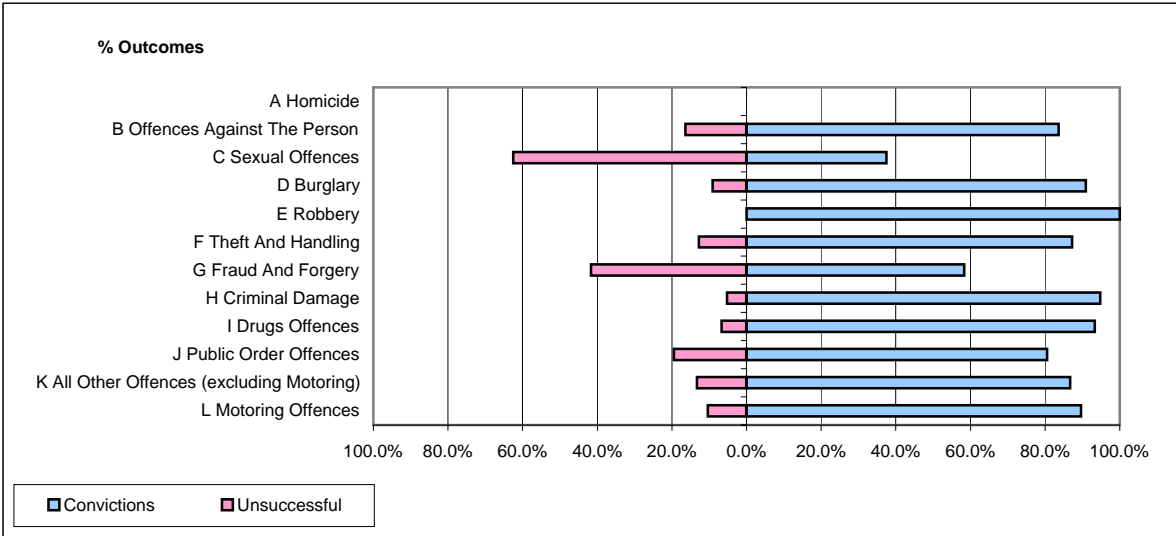


**CPS OUTCOMES BY PRINCIPAL OFFENCE CATEGORY**

September 2007

**P14-Gloucestershire**



	Convictions		Unsuccessful	
	Number of Defendants	%	Number of Defendants	%
<b>A Homicide</b>	<b>0</b>	<b>0</b>	<b>0</b>	<b>0</b>
<b>B Offences Against The Person</b>	<b>128</b>	<b>83.7%</b>	<b>25</b>	<b>16.3%</b>
<b>C Sexual Offences</b>	<b>3</b>	<b>37.5%</b>	<b>5</b>	<b>62.5%</b>
<b>D Burglary</b>	<b>20</b>	<b>90.9%</b>	<b>2</b>	<b>9.1%</b>
<b>E Robbery</b>	<b>6</b>	<b>100.0%</b>	<b>0</b>	<b>0.0%</b>
<b>F Theft And Handling</b>	<b>116</b>	<b>87.2%</b>	<b>17</b>	<b>12.8%</b>
<b>G Fraud And Forgery</b>	<b>7</b>	<b>58.3%</b>	<b>5</b>	<b>41.7%</b>
<b>H Criminal Damage</b>	<b>36</b>	<b>94.7%</b>	<b>2</b>	<b>5.3%</b>
<b>I Drugs Offences</b>	<b>42</b>	<b>93.3%</b>	<b>3</b>	<b>6.7%</b>
<b>J Public Order Offences</b>	<b>58</b>	<b>80.6%</b>	<b>14</b>	<b>19.4%</b>
<b>K All Other Offences (excluding Motoring)</b>	<b>13</b>	<b>86.7%</b>	<b>2</b>	<b>13.3%</b>
<b>L Motoring Offences</b>	<b>259</b>	<b>89.6%</b>	<b>30</b>	<b>10.4%</b>
<b>Admin Finalisations</b>	<b>0</b>	<b>0.0%</b>	<b>19</b>	<b>100.0%</b>
<b>TOTAL</b>	<b>688</b>	<b>84.7%</b>	<b>124</b>	<b>15.3%</b>