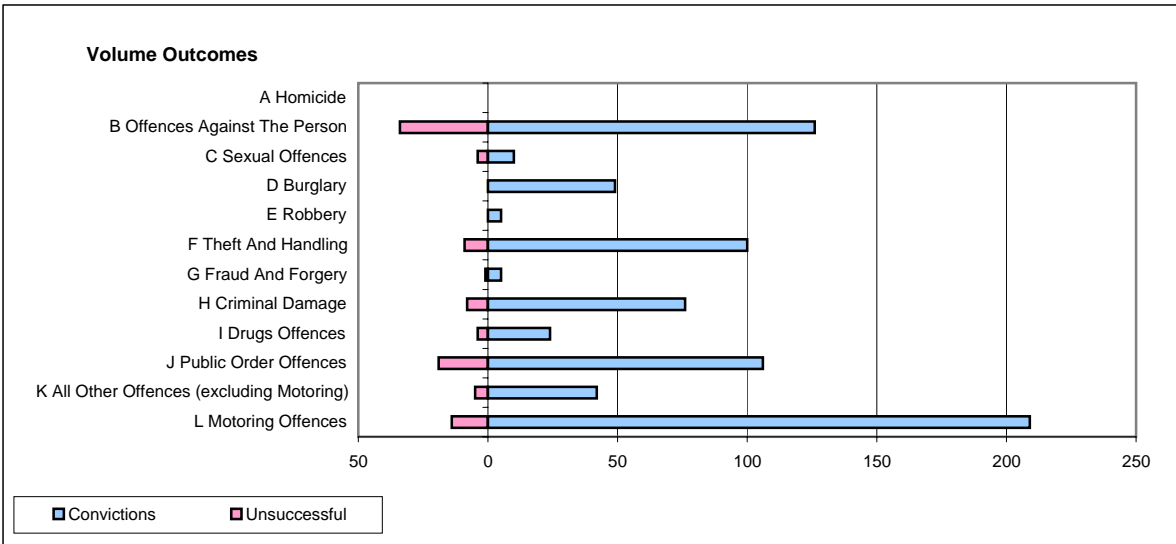
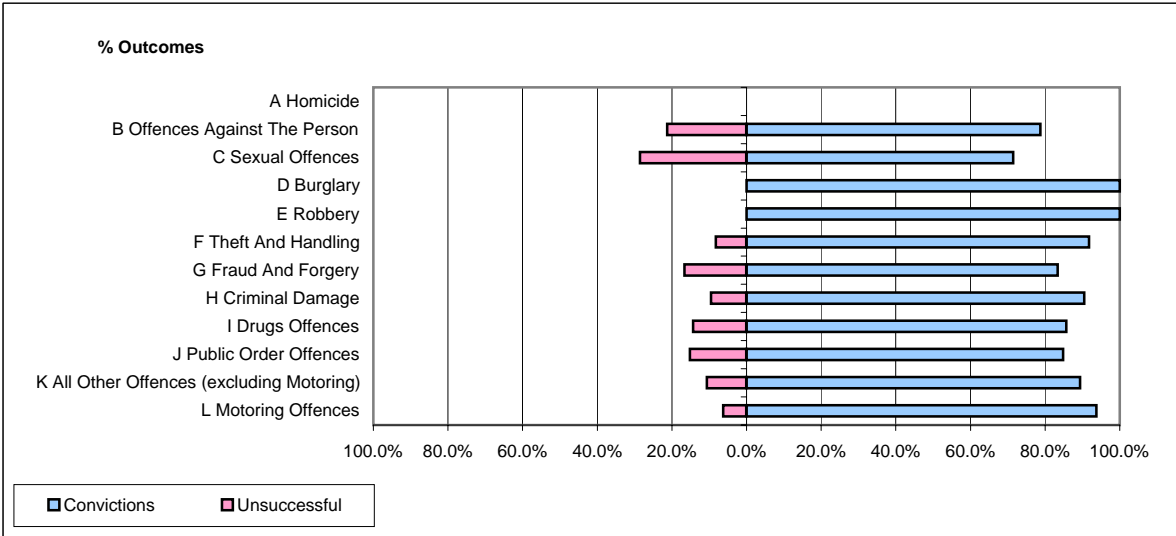


**CPS OUTCOMES BY PRINCIPAL OFFENCE CATEGORY**

**September 2007**

**P11-Durham**



	Convictions		Unsuccessful	
	Number of Defendants	%	Number of Defendants	%
<b>A Homicide</b>	<b>0</b>	<b>0</b>	<b>0</b>	<b>0</b>
<b>B Offences Against The Person</b>	<b>126</b>	<b>78.8%</b>	<b>34</b>	<b>21.3%</b>
<b>C Sexual Offences</b>	<b>10</b>	<b>71.4%</b>	<b>4</b>	<b>28.6%</b>
<b>D Burglary</b>	<b>49</b>	<b>100.0%</b>	<b>0</b>	<b>0.0%</b>
<b>E Robbery</b>	<b>5</b>	<b>100.0%</b>	<b>0</b>	<b>0.0%</b>
<b>F Theft And Handling</b>	<b>100</b>	<b>91.7%</b>	<b>9</b>	<b>8.3%</b>
<b>G Fraud And Forgery</b>	<b>5</b>	<b>83.3%</b>	<b>1</b>	<b>16.7%</b>
<b>H Criminal Damage</b>	<b>76</b>	<b>90.5%</b>	<b>8</b>	<b>9.5%</b>
<b>I Drugs Offences</b>	<b>24</b>	<b>85.7%</b>	<b>4</b>	<b>14.3%</b>
<b>J Public Order Offences</b>	<b>106</b>	<b>84.8%</b>	<b>19</b>	<b>15.2%</b>
<b>K All Other Offences (excluding Motoring)</b>	<b>42</b>	<b>89.4%</b>	<b>5</b>	<b>10.6%</b>
<b>L Motoring Offences</b>	<b>209</b>	<b>93.7%</b>	<b>14</b>	<b>6.3%</b>
<b>Admin Finalisations</b>	<b>0</b>	<b>0.0%</b>	<b>12</b>	<b>100.0%</b>
<b>TOTAL</b>	<b>752</b>	<b>87.2%</b>	<b>110</b>	<b>12.8%</b>