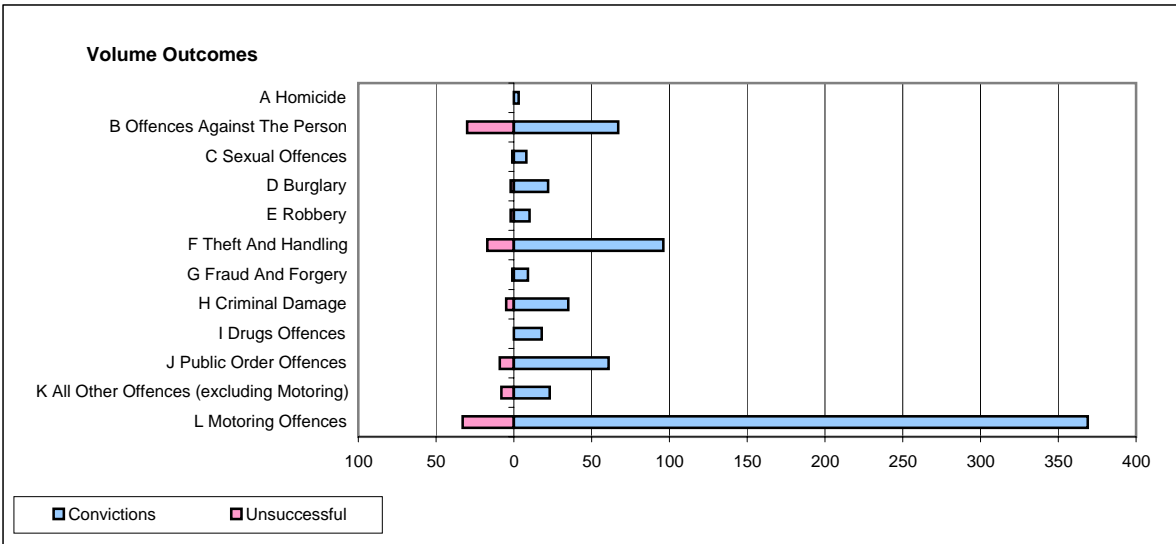
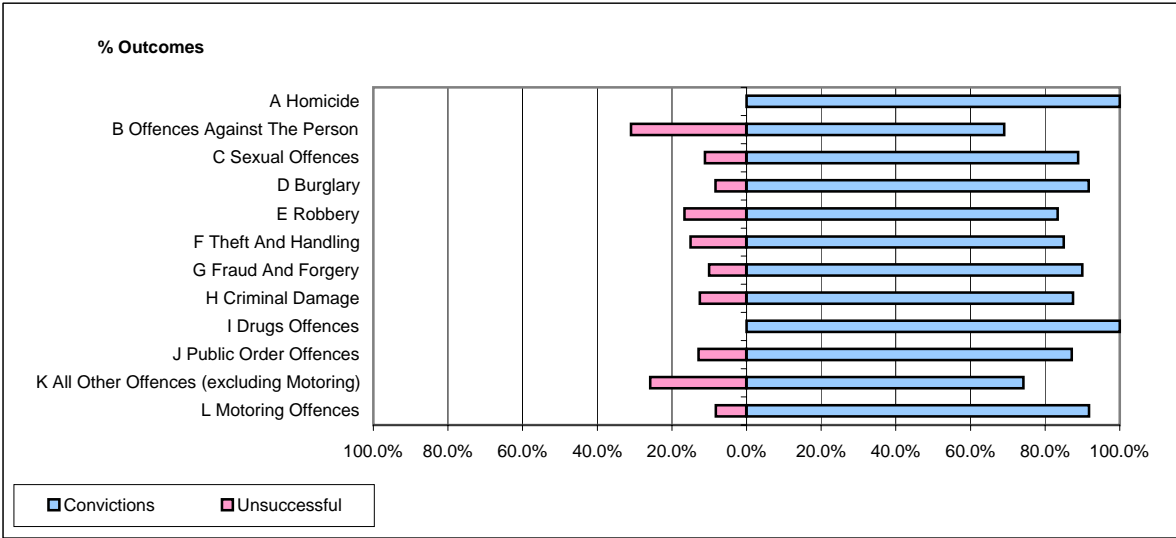


**CPS OUTCOMES BY PRINCIPAL OFFENCE CATEGORY**

**September 2007**

**P02-Bedfordshire**



	Convictions		Unsuccessful	
	Number of Defendants	%	Number of Defendants	%
<b>A Homicide</b>	<b>3</b>	<b>100.0%</b>	<b>0</b>	<b>0.0%</b>
<b>B Offences Against The Person</b>	<b>67</b>	<b>69.1%</b>	<b>30</b>	<b>30.9%</b>
<b>C Sexual Offences</b>	<b>8</b>	<b>88.9%</b>	<b>1</b>	<b>11.1%</b>
<b>D Burglary</b>	<b>22</b>	<b>91.7%</b>	<b>2</b>	<b>8.3%</b>
<b>E Robbery</b>	<b>10</b>	<b>83.3%</b>	<b>2</b>	<b>16.7%</b>
<b>F Theft And Handling</b>	<b>96</b>	<b>85.0%</b>	<b>17</b>	<b>15.0%</b>
<b>G Fraud And Forgery</b>	<b>9</b>	<b>90.0%</b>	<b>1</b>	<b>10.0%</b>
<b>H Criminal Damage</b>	<b>35</b>	<b>87.5%</b>	<b>5</b>	<b>12.5%</b>
<b>I Drugs Offences</b>	<b>18</b>	<b>100.0%</b>	<b>0</b>	<b>0.0%</b>
<b>J Public Order Offences</b>	<b>61</b>	<b>87.1%</b>	<b>9</b>	<b>12.9%</b>
<b>K All Other Offences (excluding Motoring)</b>	<b>23</b>	<b>74.2%</b>	<b>8</b>	<b>25.8%</b>
<b>L Motoring Offences</b>	<b>369</b>	<b>91.8%</b>	<b>33</b>	<b>8.2%</b>
<b>Admin Finalisations</b>	<b>0</b>	<b>0.0%</b>	<b>12</b>	<b>100.0%</b>
<b>TOTAL</b>	<b>721</b>	<b>85.7%</b>	<b>120</b>	<b>14.3%</b>