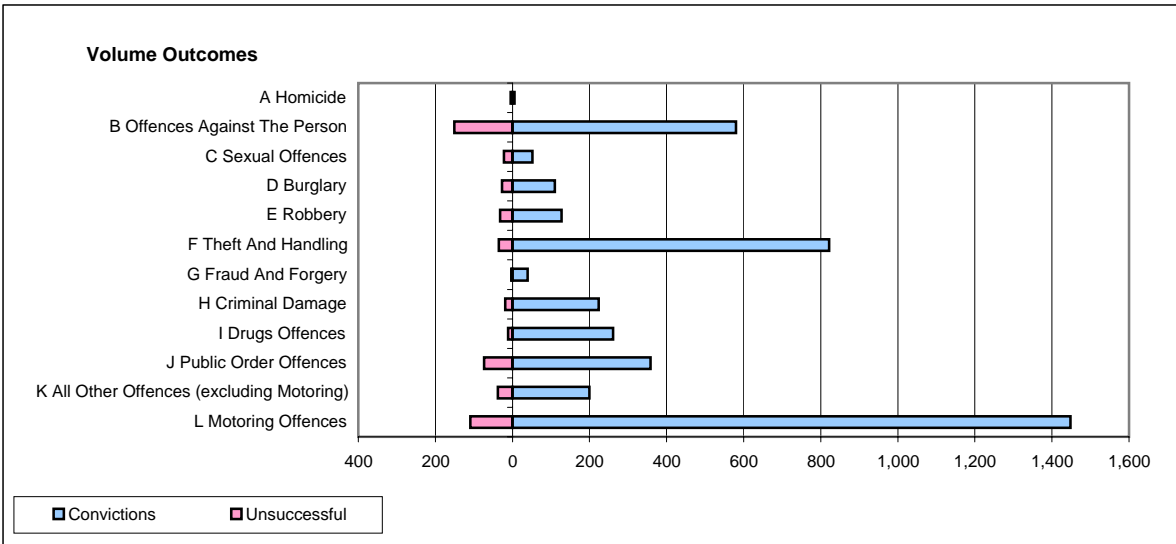
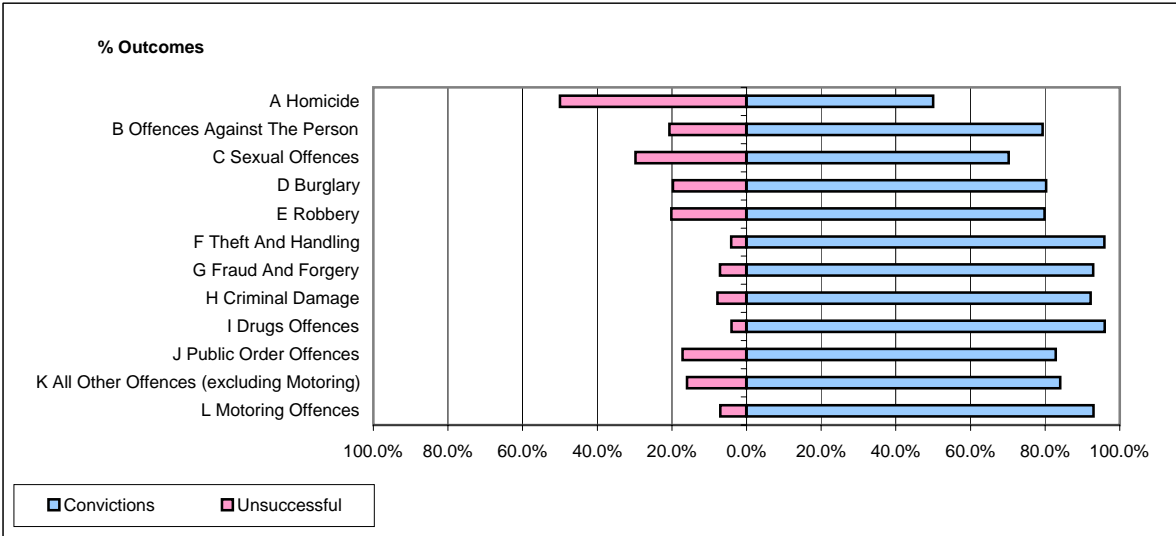


CPS OUTCOMES BY PRINCIPAL OFFENCE CATEGORY

August 2007

P41-WestMidlands



	Convictions		Unsuccessful	
	Number of Defendants	%	Number of Defendants	%
A Homicide	5	50.0%	5	50.0%
B Offences Against The Person	580	79.3%	151	20.7%
C Sexual Offences	52	70.3%	22	29.7%
D Burglary	110	80.3%	27	19.7%
E Robbery	127	79.9%	32	20.1%
F Theft And Handling	822	95.9%	35	4.1%
G Fraud And Forgery	39	92.9%	3	7.1%
H Criminal Damage	224	92.2%	19	7.8%
I Drugs Offences	261	96.0%	11	4.0%
J Public Order Offences	358	82.9%	74	17.1%
K All Other Offences (excluding Motoring)	200	84.0%	38	16.0%
L Motoring Offences	1,448	93.0%	109	7.0%
Admin Finalisations	0	0.0%	73	100.0%
TOTAL	4,226	87.6%	599	12.4%