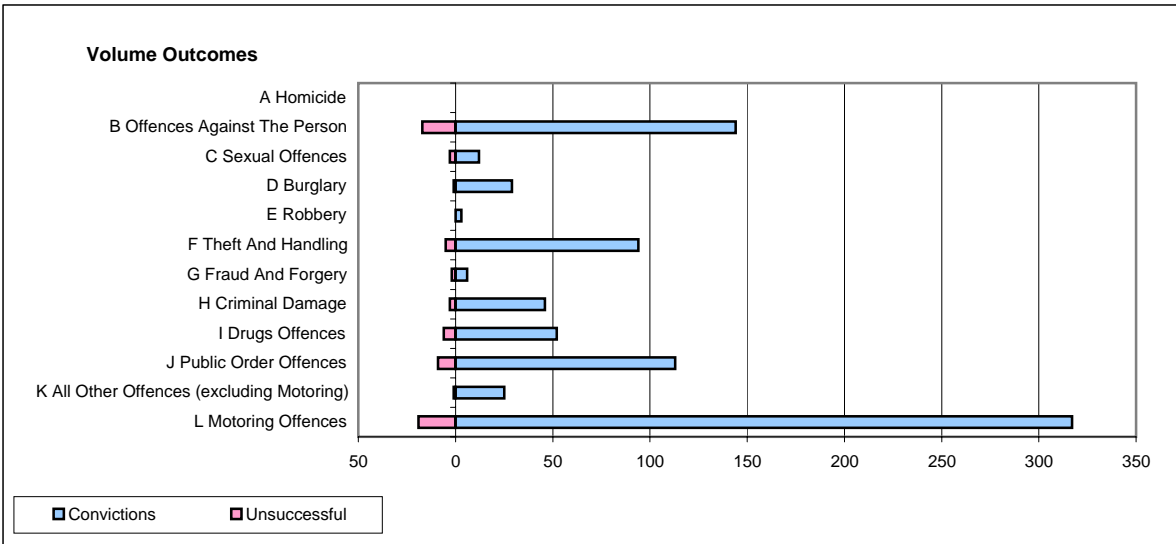
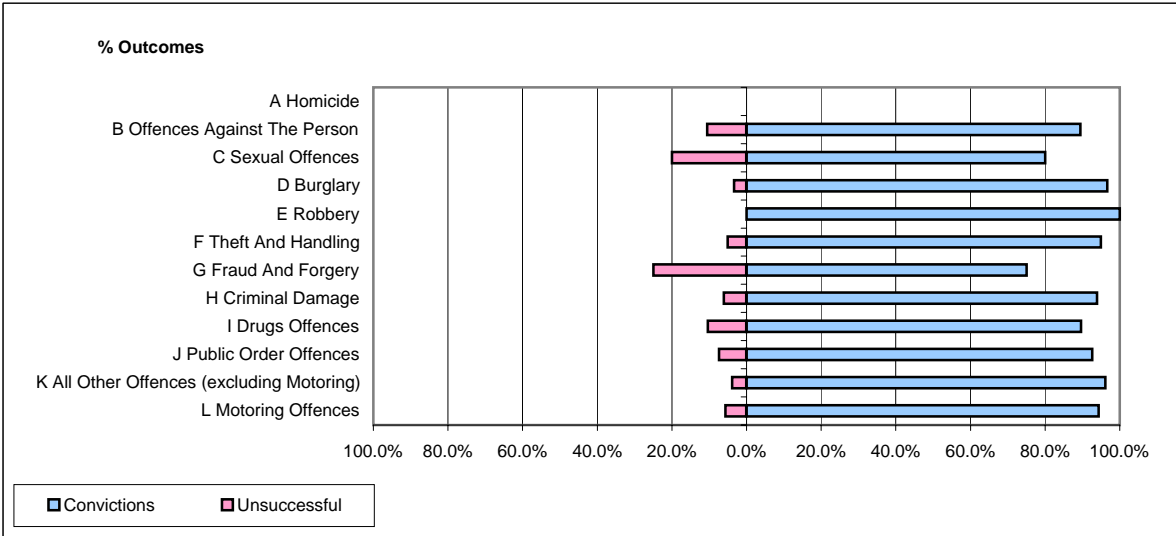


**CPS OUTCOMES BY PRINCIPAL OFFENCE CATEGORY**

**August 2007**

**P35-Suffolk**



	Convictions		Unsuccessful	
	Number of Defendants	%	Number of Defendants	%
<b>A Homicide</b>	<b>0</b>	<b>0</b>	<b>0</b>	<b>0</b>
<b>B Offences Against The Person</b>	<b>144</b>	<b>89.4%</b>	<b>17</b>	<b>10.6%</b>
<b>C Sexual Offences</b>	<b>12</b>	<b>80.0%</b>	<b>3</b>	<b>20.0%</b>
<b>D Burglary</b>	<b>29</b>	<b>96.7%</b>	<b>1</b>	<b>3.3%</b>
<b>E Robbery</b>	<b>3</b>	<b>100.0%</b>	<b>0</b>	<b>0.0%</b>
<b>F Theft And Handling</b>	<b>94</b>	<b>94.9%</b>	<b>5</b>	<b>5.1%</b>
<b>G Fraud And Forgery</b>	<b>6</b>	<b>75.0%</b>	<b>2</b>	<b>25.0%</b>
<b>H Criminal Damage</b>	<b>46</b>	<b>93.9%</b>	<b>3</b>	<b>6.1%</b>
<b>I Drugs Offences</b>	<b>52</b>	<b>89.7%</b>	<b>6</b>	<b>10.3%</b>
<b>J Public Order Offences</b>	<b>113</b>	<b>92.6%</b>	<b>9</b>	<b>7.4%</b>
<b>K All Other Offences (excluding Motoring)</b>	<b>25</b>	<b>96.2%</b>	<b>1</b>	<b>3.8%</b>
<b>L Motoring Offences</b>	<b>317</b>	<b>94.3%</b>	<b>19</b>	<b>5.7%</b>
<b>Admin Finalisations</b>	<b>0</b>	<b>0.0%</b>	<b>14</b>	<b>100.0%</b>
<b>TOTAL</b>	<b>841</b>	<b>91.3%</b>	<b>80</b>	<b>8.7%</b>