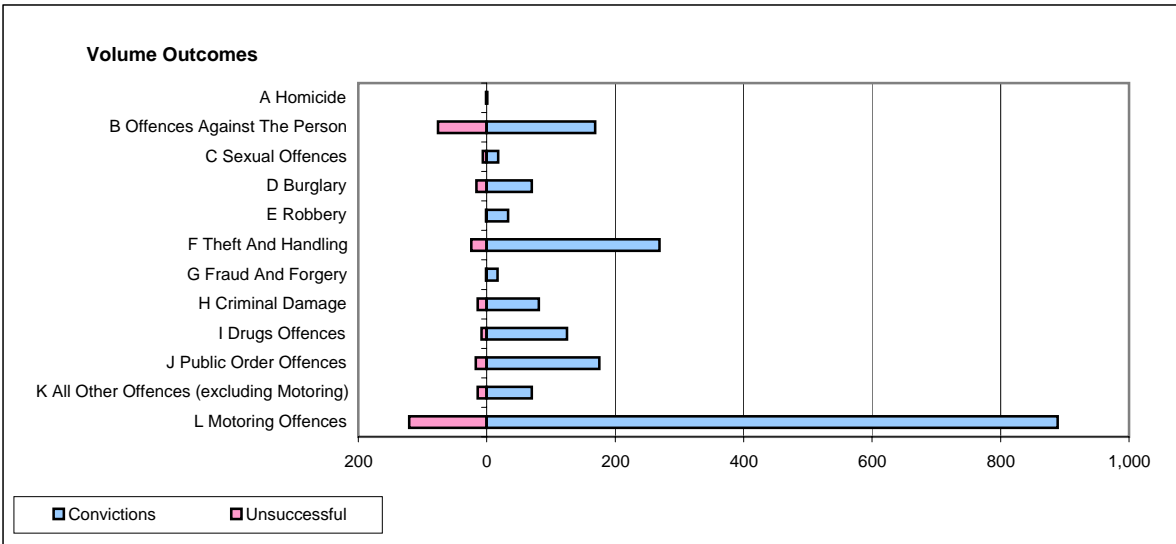
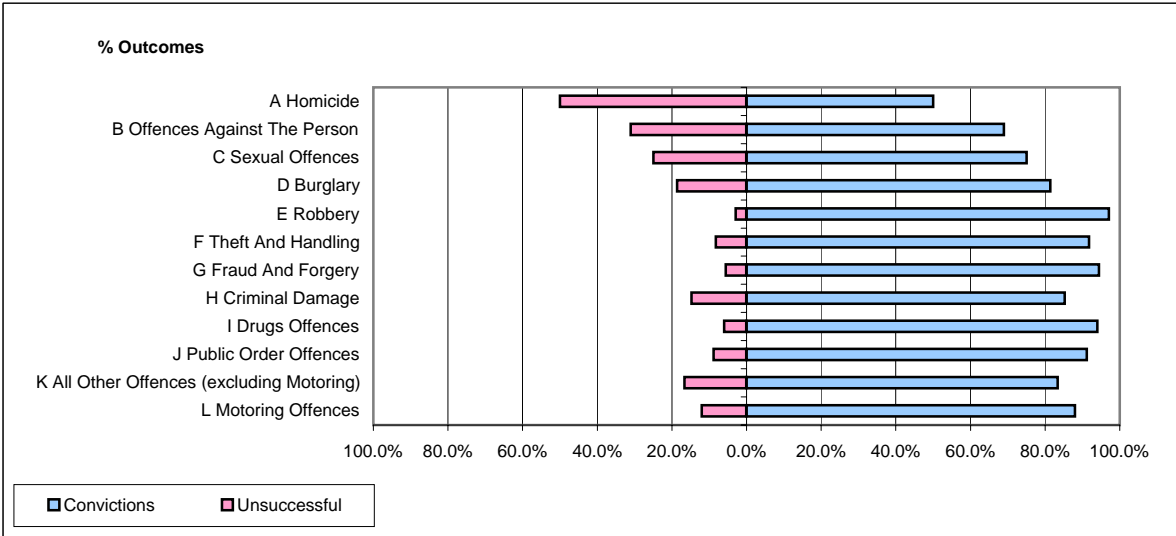


CPS OUTCOMES BY PRINCIPAL OFFENCE CATEGORY

August 2007

P32-SouthWales



	Convictions		Unsuccessful	
	Number of Defendants	%	Number of Defendants	%
A Homicide	1	50.0%	1	50.0%
B Offences Against The Person	169	69.0%	76	31.0%
C Sexual Offences	18	75.0%	6	25.0%
D Burglary	70	81.4%	16	18.6%
E Robbery	33	97.1%	1	2.9%
F Theft And Handling	269	91.8%	24	8.2%
G Fraud And Forgery	17	94.4%	1	5.6%
H Criminal Damage	81	85.3%	14	14.7%
I Drugs Offences	125	94.0%	8	6.0%
J Public Order Offences	175	91.1%	17	8.9%
K All Other Offences (excluding Motoring)	70	83.3%	14	16.7%
L Motoring Offences	889	88.0%	121	12.0%
Admin Finalisations	0	0.0%	107	100.0%
TOTAL	1,917	82.5%	406	17.5%