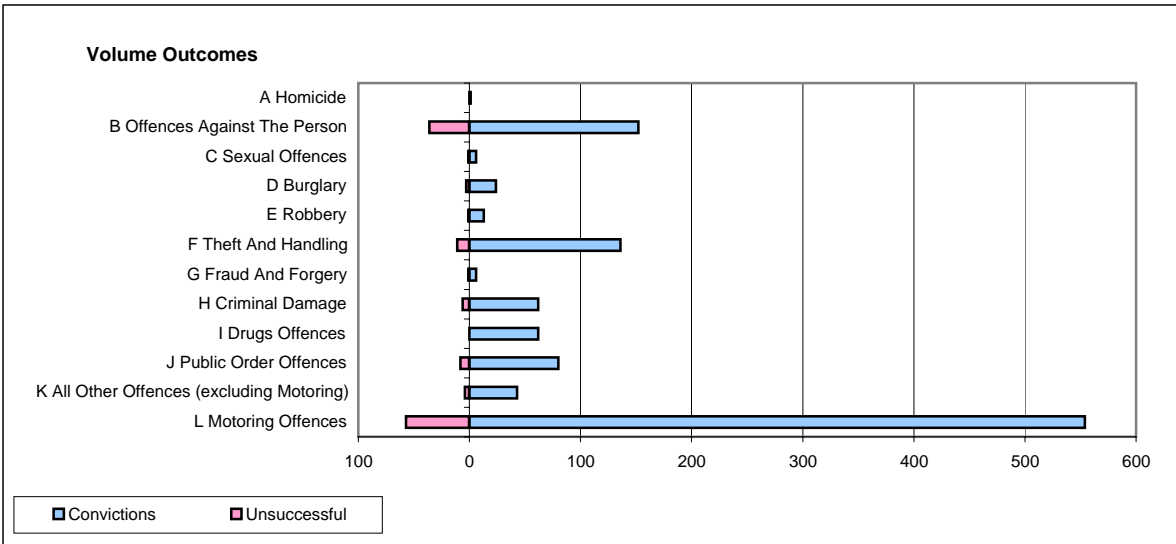
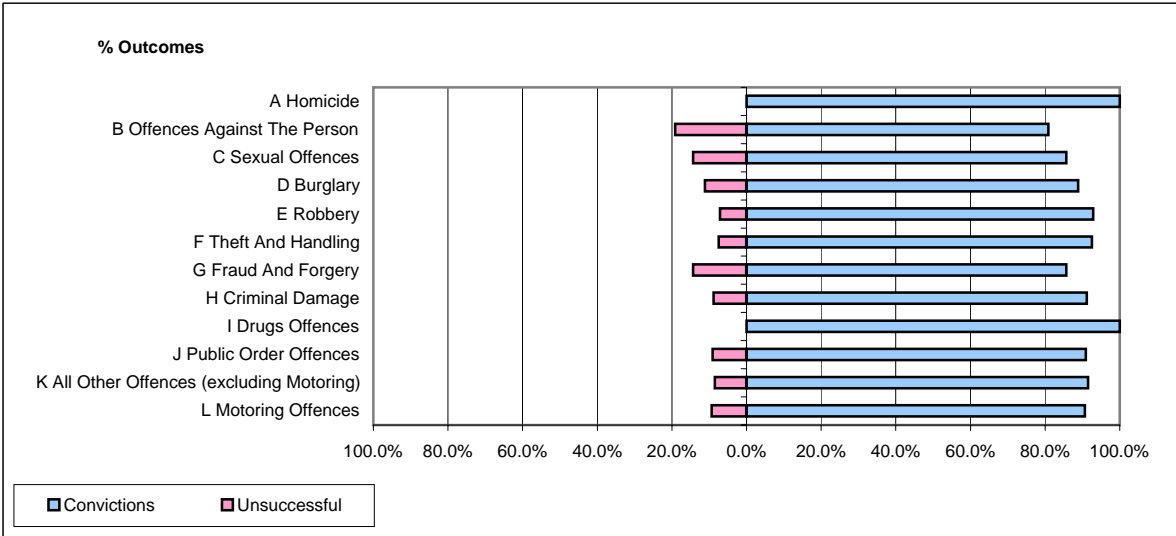


CPS OUTCOMES BY PRINCIPAL OFFENCE CATEGORY

August 2007

P26-Norfolk



	Convictions		Unsuccessful	
	Number of Defendants	%	Number of Defendants	%
A Homicide	1	100.0%	0	0.0%
B Offences Against The Person	152	80.9%	36	19.1%
C Sexual Offences	6	85.7%	1	14.3%
D Burglary	24	88.9%	3	11.1%
E Robbery	13	92.9%	1	7.1%
F Theft And Handling	136	92.5%	11	7.5%
G Fraud And Forgery	6	85.7%	1	14.3%
H Criminal Damage	62	91.2%	6	8.8%
I Drugs Offences	62	100.0%	0	0.0%
J Public Order Offences	80	90.9%	8	9.1%
K All Other Offences (excluding Motoring)	43	91.5%	4	8.5%
L Motoring Offences	554	90.7%	57	9.3%
Admin Finalisations	0	0.0%	15	100.0%
TOTAL	1,139	88.8%	143	11.2%