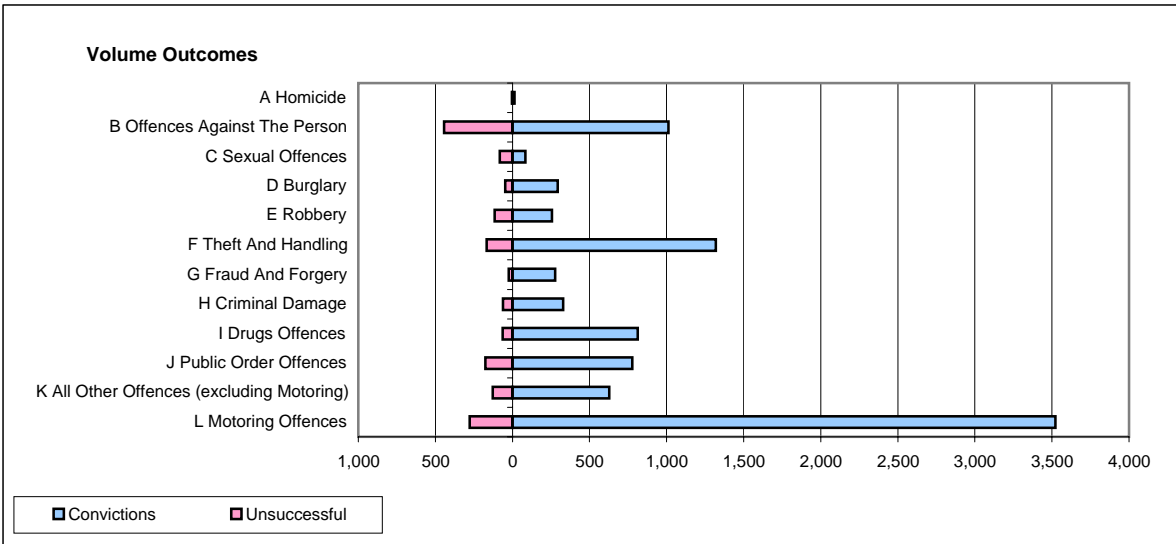
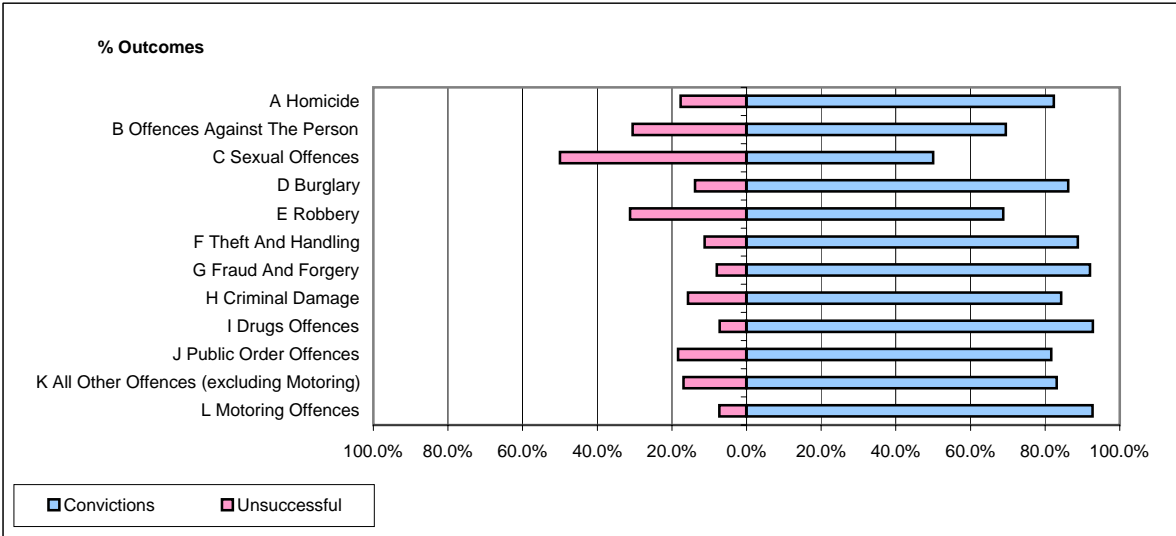


CPS OUTCOMES BY PRINCIPAL OFFENCE CATEGORY

August 2007

P25-Metropolitan&City



	Convictions		Unsuccessful	
	Number of Defendants	%	Number of Defendants	%
A Homicide	14	82.4%	3	17.6%
B Offences Against The Person	1,012	69.5%	444	30.5%
C Sexual Offences	83	50.0%	83	50.0%
D Burglary	294	86.2%	47	13.8%
E Robbery	256	68.8%	116	31.2%
F Theft And Handling	1,319	88.8%	167	11.2%
G Fraud And Forgery	276	92.0%	24	8.0%
H Criminal Damage	328	84.3%	61	15.7%
I Drugs Offences	813	92.8%	63	7.2%
J Public Order Offences	778	81.6%	175	18.4%
K All Other Offences (excluding Motoring)	628	83.1%	128	16.9%
L Motoring Offences	3,523	92.7%	277	7.3%
Admin Finalisations	0	0.0%	476	100.0%
TOTAL	9,324	81.9%	2,064	18.1%