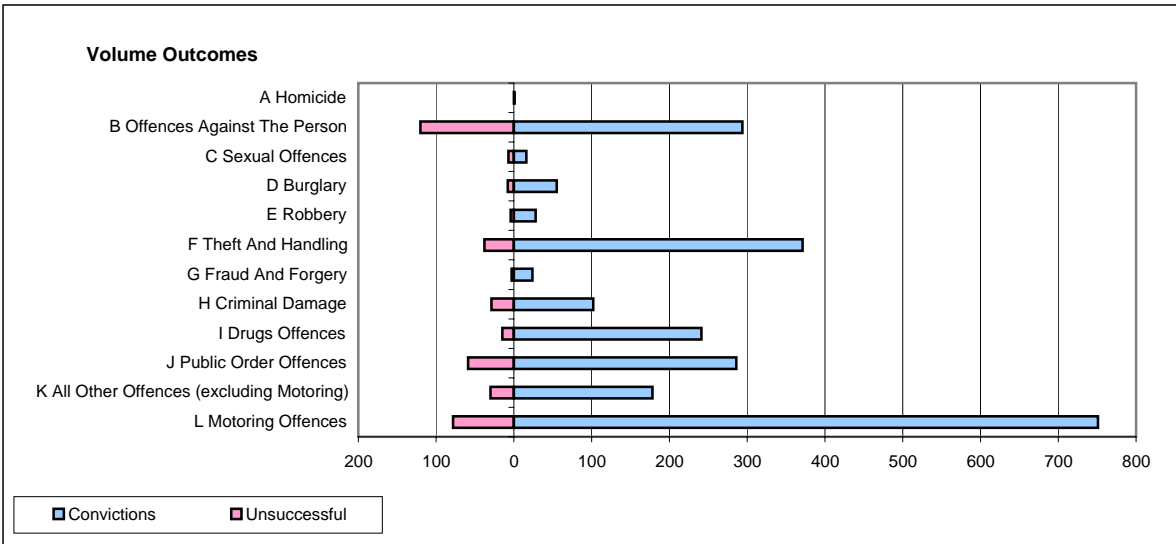
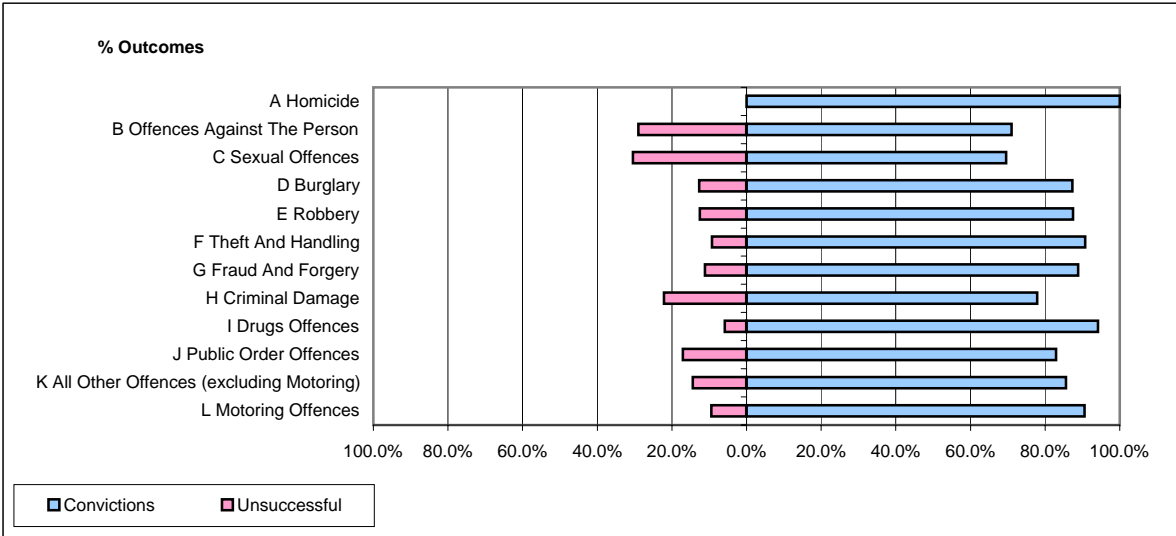


**CPS OUTCOMES BY PRINCIPAL OFFENCE CATEGORY**

**August 2007**

**P24-Merseyside**



	Convictions		Unsuccessful	
	Number of Defendants	%	Number of Defendants	%
<b>A Homicide</b>	<b>1</b>	<b>100.0%</b>	<b>0</b>	<b>0.0%</b>
<b>B Offences Against The Person</b>	<b>294</b>	<b>71.0%</b>	<b>120</b>	<b>29.0%</b>
<b>C Sexual Offences</b>	<b>16</b>	<b>69.6%</b>	<b>7</b>	<b>30.4%</b>
<b>D Burglary</b>	<b>55</b>	<b>87.3%</b>	<b>8</b>	<b>12.7%</b>
<b>E Robbery</b>	<b>28</b>	<b>87.5%</b>	<b>4</b>	<b>12.5%</b>
<b>F Theft And Handling</b>	<b>371</b>	<b>90.7%</b>	<b>38</b>	<b>9.3%</b>
<b>G Fraud And Forgery</b>	<b>24</b>	<b>88.9%</b>	<b>3</b>	<b>11.1%</b>
<b>H Criminal Damage</b>	<b>102</b>	<b>77.9%</b>	<b>29</b>	<b>22.1%</b>
<b>I Drugs Offences</b>	<b>241</b>	<b>94.1%</b>	<b>15</b>	<b>5.9%</b>
<b>J Public Order Offences</b>	<b>286</b>	<b>82.9%</b>	<b>59</b>	<b>17.1%</b>
<b>K All Other Offences (excluding Motoring)</b>	<b>178</b>	<b>85.6%</b>	<b>30</b>	<b>14.4%</b>
<b>L Motoring Offences</b>	<b>751</b>	<b>90.6%</b>	<b>78</b>	<b>9.4%</b>
<b>Admin Finalisations</b>	<b>0</b>	<b>0.0%</b>	<b>42</b>	<b>100.0%</b>
<b>TOTAL</b>	<b>2,347</b>	<b>84.4%</b>	<b>433</b>	<b>15.6%</b>