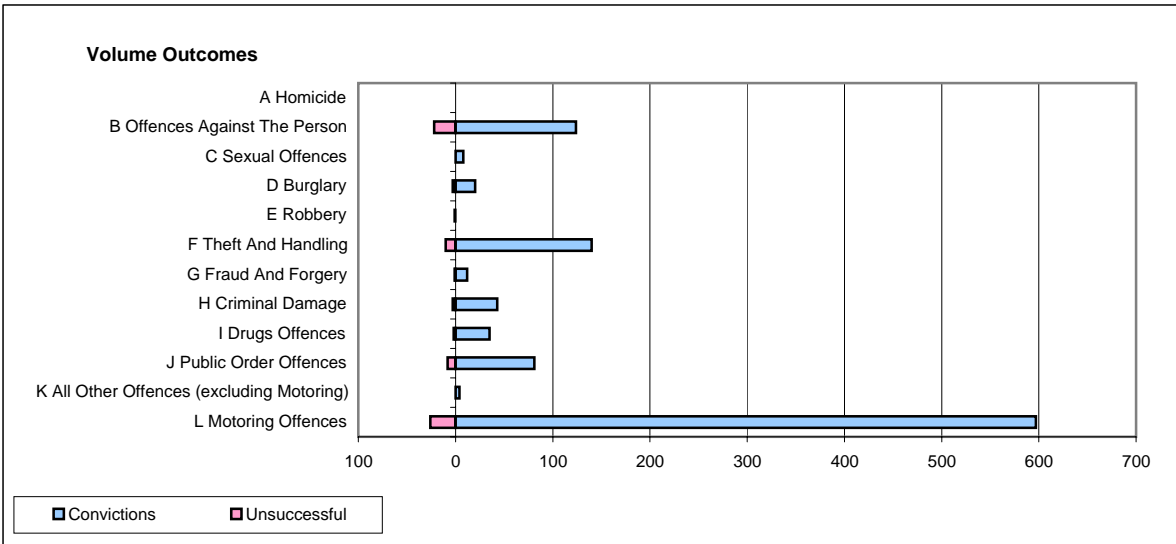
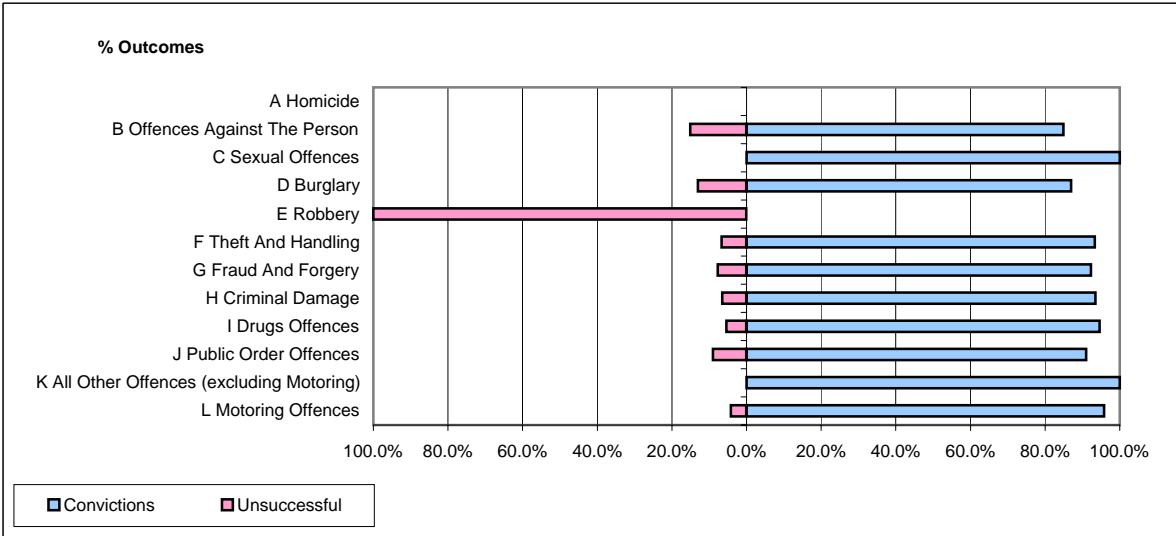


CPS OUTCOMES BY PRINCIPAL OFFENCE CATEGORY

August 2007

P23-Lincolnshire



	Convictions		Unsuccessful	
	Number of Defendants	%	Number of Defendants	%
A Homicide	0	0	0	0
B Offences Against The Person	124	84.9%	22	15.1%
C Sexual Offences	8	100.0%	0	0.0%
D Burglary	20	87.0%	3	13.0%
E Robbery	0	0.0%	1	100.0%
F Theft And Handling	140	93.3%	10	6.7%
G Fraud And Forgery	12	92.3%	1	7.7%
H Criminal Damage	43	93.5%	3	6.5%
I Drugs Offences	35	94.6%	2	5.4%
J Public Order Offences	81	91.0%	8	9.0%
K All Other Offences (excluding Motoring)	4	100.0%	0	0.0%
L Motoring Offences	597	95.8%	26	4.2%
Admin Finalisations	0	0.0%	18	100.0%
TOTAL	1,064	91.9%	94	8.1%